

elite

PUMP OVERRUN OVER RIDE TIMER

PRODUCT CODE: PUMP RUN CONT

Protect your valuable pump or water supply!

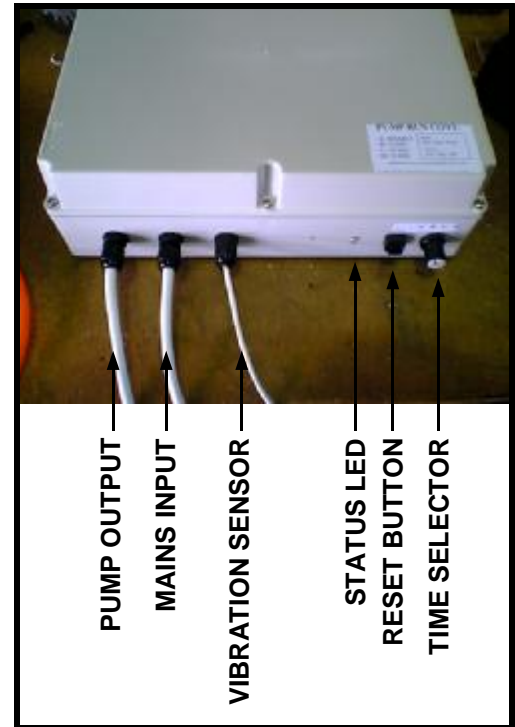
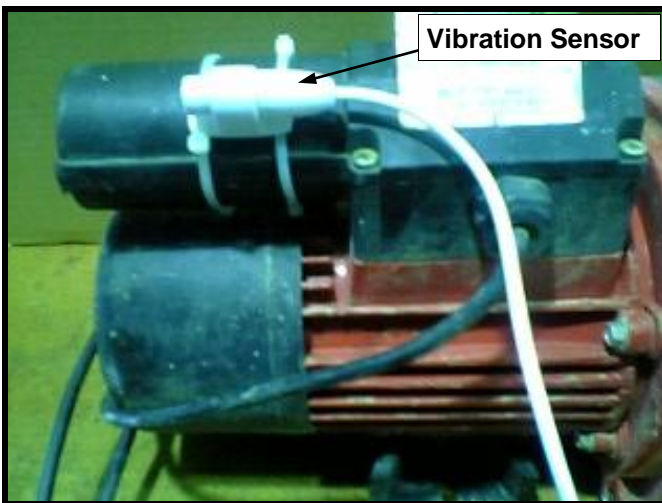
The *elite* will simply monitor your pump and shut it off if it runs for longer than you select.

Run detection is achieved by using the supplied vibration sensor mounted to the pump.

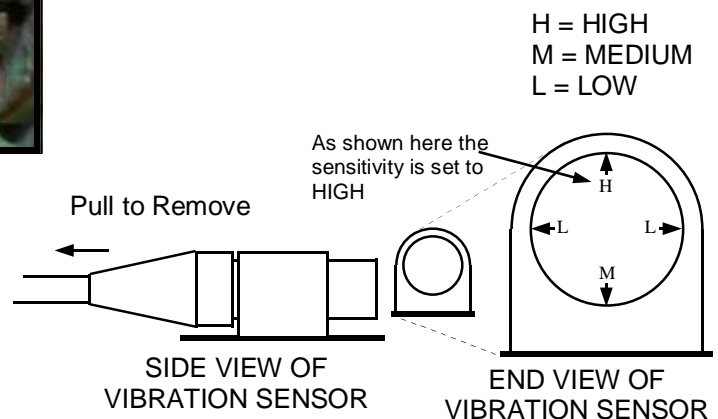
elite Installation could not be simpler!

1. Mount the control box in an elevated position and plug the 3 pin socket into your pumps power feed and then the 3 pin plug into the mains outlet.

2. The vibration sensor must be securely attached to the pump, using the supplied cable ties as shown below. This **must** be Horizontal but may be fitted anywhere on the pump.



3. Adjust the sensitivity of the sensor. This is done by pulling the sensor out of its housing and turning it to the desired sensitivity setting. (see diagram). The **STATUS LED** should flash while the pump is running. If not you will need to adjust the sensitivity further.



4. Lastly, there are 3 different time settings 10, 20 & 30 minutes, these are the maximum times the pump may continuously run before the controller will shut it down. You can also select to over ride or disable the controller. To make your selection simply turn the **Time Selector** Knob to the position marked with the corresponding letter.

A = Disable, B = 10 Min, C = 20 Min & D = 30 Min

If the time set expires the *elite* will drop power to the pump and start beeping.

To reactivate the pump, simply press the **Restart Button** on the Controller.

The power will then return to the pump and the Controller will continue to monitor the run.

Proudly Distributed
by

