

# YM-350W

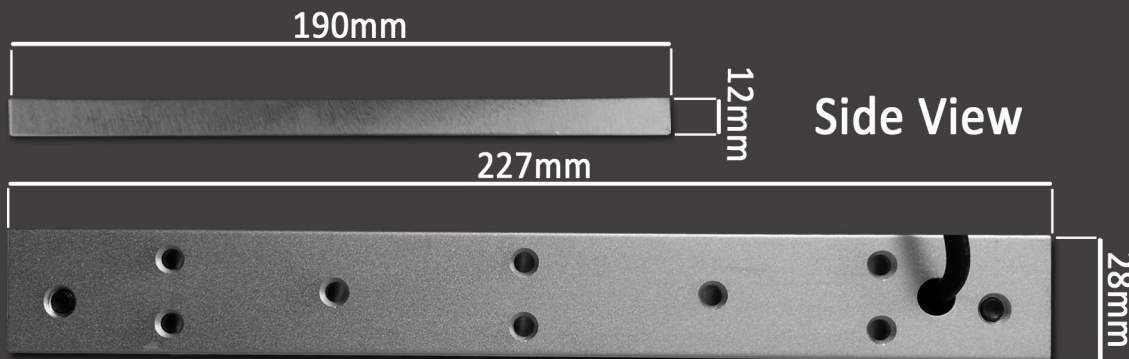


12-24VDC Weatherproof Magnetic  
Clamp. 350Kg Hold Force

| Specifications      |                                      |
|---------------------|--------------------------------------|
| Voltage             | 12-24VDC                             |
| Current (operating) | 500mA (12VDC) 250mA (24VDC)          |
| Material            | Aluminium & stainless steel          |
| Warranty            | 2 years                              |
| Dimensions          | (L)227mm x (W)52mm x (D)28mm         |
| Weight              | 2.5Kg                                |
| Accessories         | Fixings, Optional extras (see below) |

Suitable for locking external doors with a hold force of 350Kg. Specifically designed brackets are available as an extra. These are designed for various installation requirements including the ABK-350UL for mounting to glass doors. Power to lock.

Top View

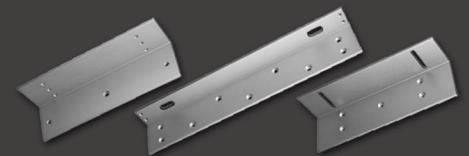
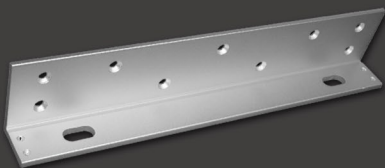


Side View

ABK-350L-W

ABK-350UL

ABK-350ZL-W



'L' bracket for YM-350W  
magnetic clamp.

For adapting the YM-350W  
armature to glass doors  
without drilling.

'ZL' bracket for YM-350W  
magnetic clamp.