



HM-SMOKE230

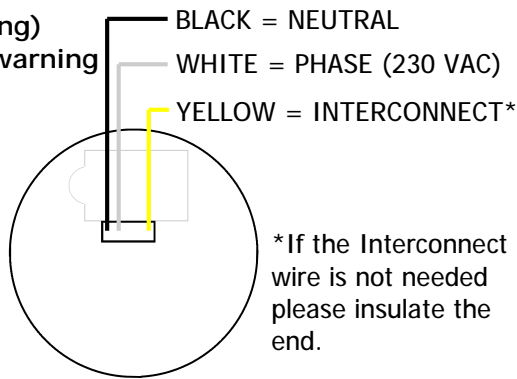
230v AC inter connectable smoke detector with battery backup and hush & test button.

FEATURES:

- Auto-reset when smoke clears
- Self test/hush button
- 9 Volt battery backup (non charging)
- Low battery and missing battery warning
- 85 db internal warning sounder
- Inter connectable
- CE approved
- Photo Electric

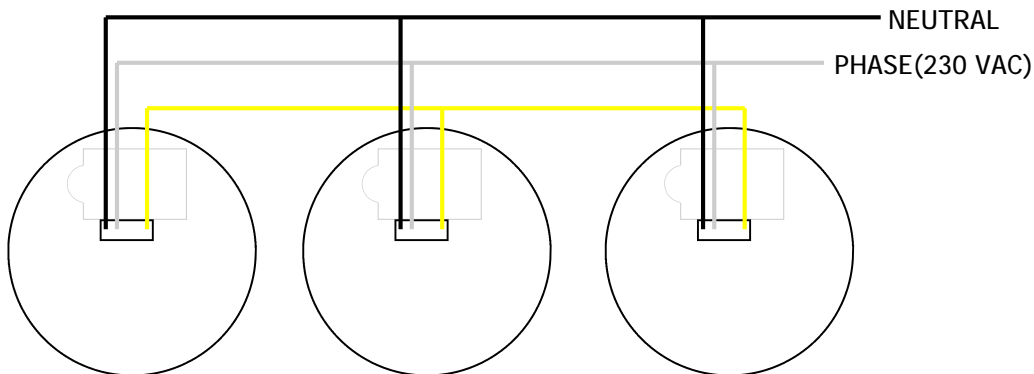
SPECIFICATION:

Operating Voltage. 230VAC 50Hz
 Current Standby 10uA
 Current Alarm 35uA
 Operating Temp. -10°C ~ +50°C
 Dimensions. Dia.128mm x 38mm



INTER CONNECTING SMOKE DETECTORS

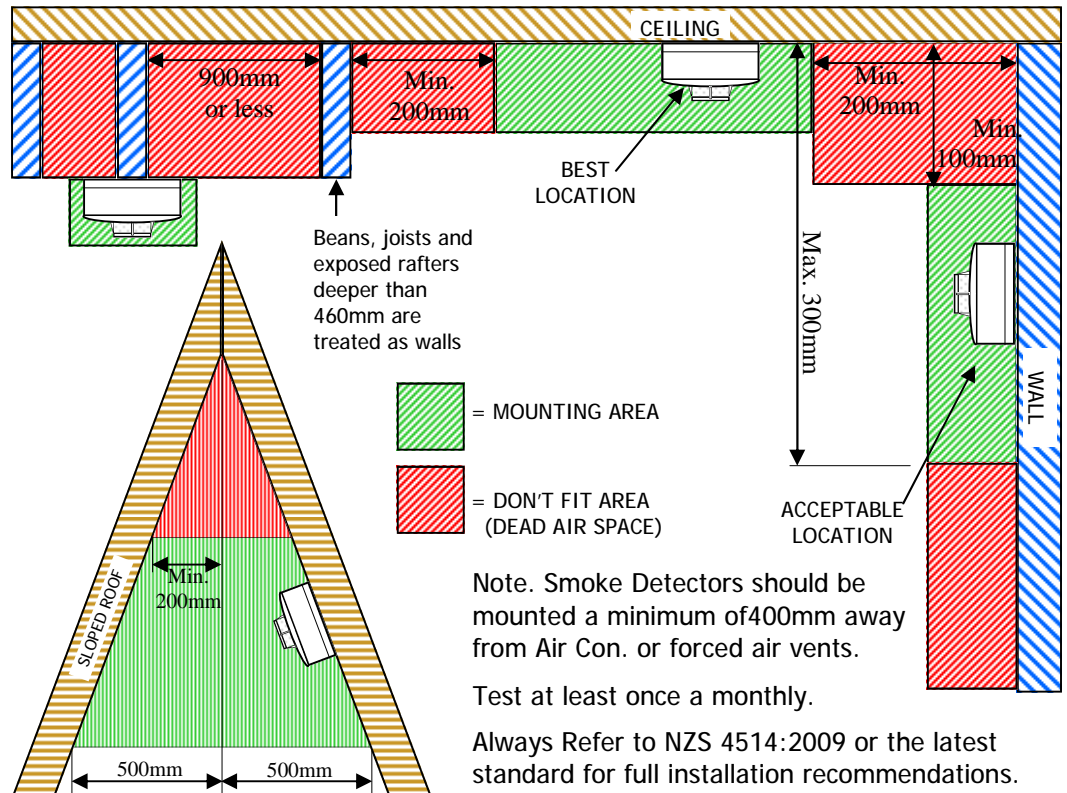
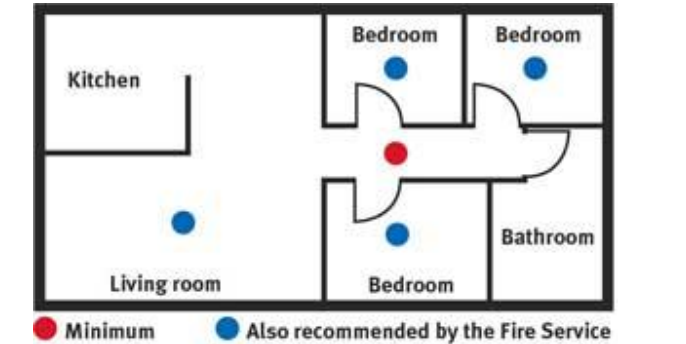
When the HM-SMOKE230's are wired in inter connectable mode, if one of the smoke detectors is triggered, all smokes in the circuit will go into alarm and activate their sounders.



Suggested Mounting Locations

Smoke alarms must be located in escape routes on all levels within the household unit. On levels containing sleeping spaces, they must be installed within the sleeping space, or within 3 metres of every sleeping space door. And they must be audible through closed doors.

Always Refer to NZS 4514:2009 or the latest standard for full installation recommendations.



ARROWHEAD ALARM PRODUCTS Ltd.
 344b Rosedale Rd,
 Albany,
 Auckland.
 Ph. 09 414 0085
 Fax. 09 414 0088
 www.aap.co.nz

Arrowhead Alarm Products Ltd

V1.02