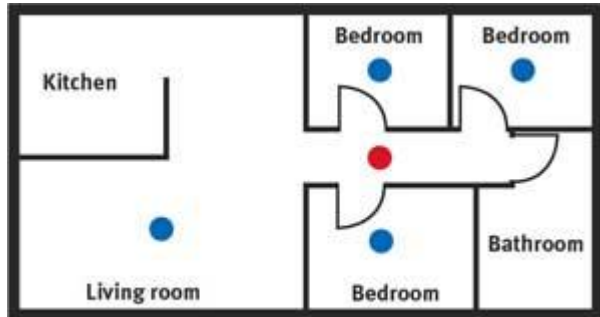


Suggested Mounting Locations

Smoke alarms must be located in escape routes on all levels within the household unit.

On levels containing sleeping spaces, they must be installed within the sleeping space, or within 3 metres of every sleeping space door and they must be audible through closed doors.

Always Refer to NZS 4514:2009 or the latest standard for full installation recommendations.



● Minimum ● Also recommended by the Fire Service

Operation & Testing

Pressing the Test Button will activate test mode, triggering both the Relay and the Buzzer. The HM-MINI-12V smoke detector should be tested every month.

The smoke detector sounder will automatically reset, when all the smoke has cleared.

The alarm system sounders may need to be deactivated from the control keypad.

Hush feature. When the smoke detector has been activated, pressing the test button for 1 second, will silence that smoke detectors sounder. *This will not hush the controllers, sounders or other smoke detectors connected.*

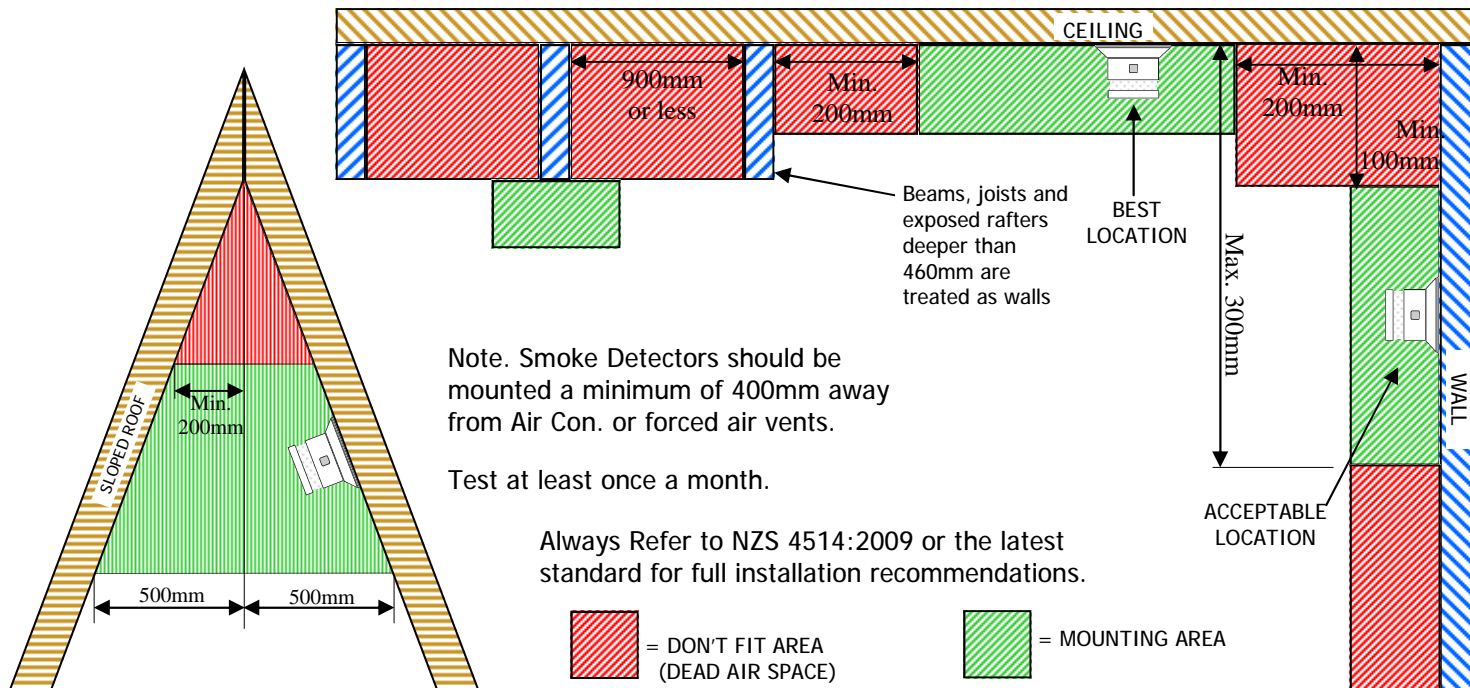
When using any aerosol smoke detector tester, please follow all instructions provided on the can. Improper use may result in degraded detector performance.

HM-MINI-12V

AUTO RESETTING SMOKE DETECTOR

Specifications

Detection Type	Photoelectric Chamber
Power Source	9-16 Volts DC
Standby Current	5mA
Alarm Current	25mA
Buzzer Output	85db @ 3 meters
Output Relay	N/O and N/C Contacts 50mA max (2K2 EOL fitted)
Dimensions	51mm x Ø45mm (smoke) Ø64mm (base)
Standards:	GB4715-2005, EN14604, UL217



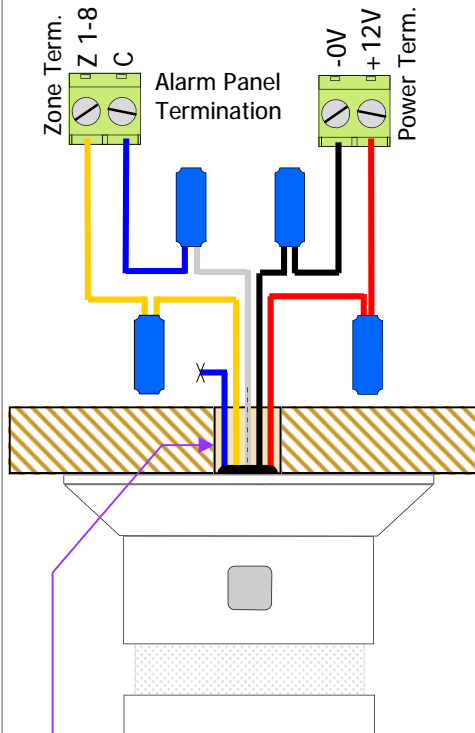
Arrowhead Alarm Products Ltd

ARROWHEAD ALARM PRODUCTS Ltd.
 344b Rosedale Rd,
 Albany,
 Auckland.
 Ph. 09 414 0085
 Fax. 09 414 0088
www.aap.co.nz

v1.04

Connection Diagram

Simple Wiring for Elite Systems Using Built-in 2K2 EOL *Diagram A

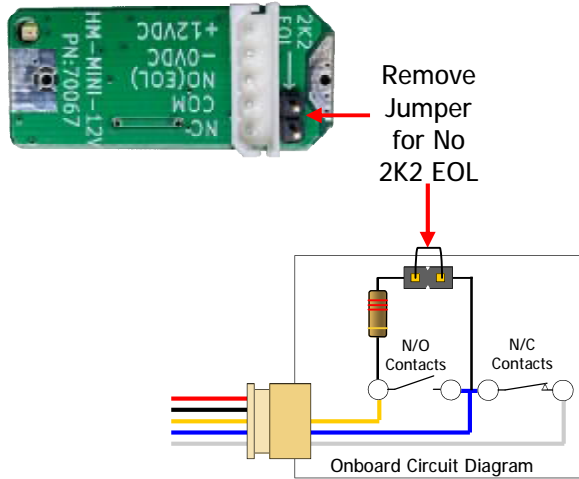


Drill a 10-13mm hole in the Wall/Ceiling for cabling.
 Note. Wires must leave the detector through the rubber grommet.
 The Detector must be sealed from Wall/Ceiling cavity.

Built-in 2K2 EOL

The HM-MINI-12V has a built-in 2K2 EOL resistor. This allows you to easily wire one detector, directly to a Zone Input on an Elite series control panel. (see diagram A)

If you are using a different control panel or wish to wire multiple HM-MINI-12V's to the same zone (see diagram B, C & D) you will need to remove the 2K2 EOL Jumper.

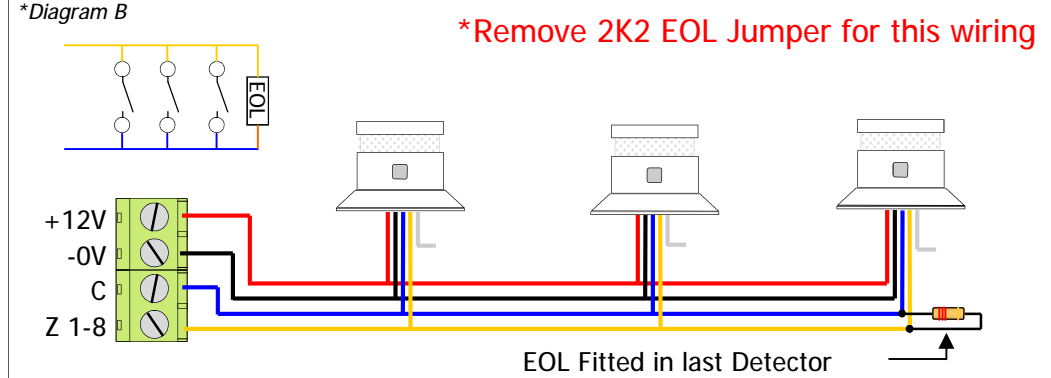


Wire Colour	Connection
Red	+9 to 16 VDC
Black	-0 VDC
Yellow	Normally Open
Blue	Common
White	Normally Closed

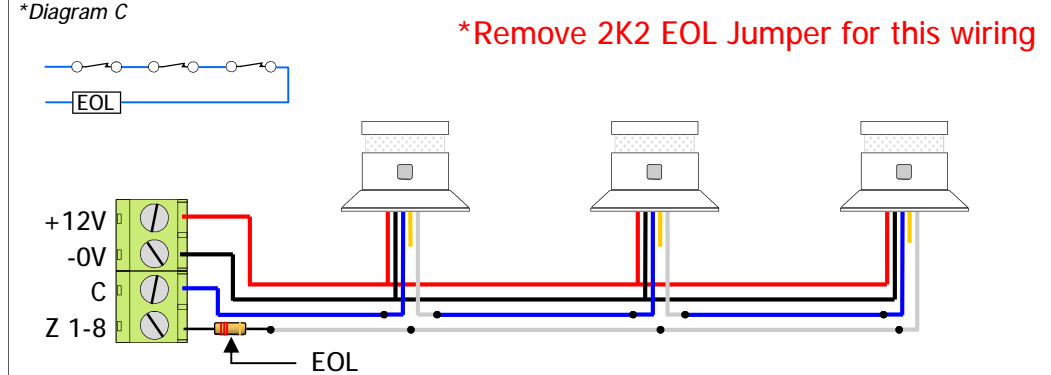
Panel Programming (ESL, ESX, Elite S & S-Lite only)

You will need to tell the panel what zone the smoke detector is connected to. In Program mode press <PROGRAM> <123> <ENTER> then put in the zone (1-8) that the smoke is on <1-8> <ENTER> now turn On option <5> <ENTER>. With this feature turned On, when the smoke detector is triggered the Alarm will activate even if the system is disarmed. Also the sirens will pulse On and Off making a different sound to a normal burglar alarm. The user will have to clear the alarm with their normal alarm code.
 i.e. P 123 E 8 E 5 E (zone 8 is now a 24 Hour Fire zone)

Multiple Detectors in Parallel Connection (using N/O Contacts) *Diagram B



Multiple Detectors in Series Connection (using N/C Contacts) Daisy-chain wiring *Diagram C



Multiple Detectors in Series Connection (using N/C Contacts) Individual wiring *Diagram D

