

Starlight Camera

TVT-B28SPOE

2.0MP IP Bullet Camera - 2.8mm Lens



- Starlight Network Camera
- 2.8mm Fixed Lens
- 20 ~ 30m Infrared Range
- IP67 For New Zealand Conditions
- 2 Year Return to Base Warranty



Compact Design

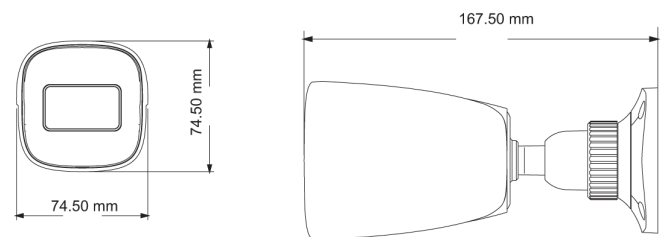
HDCCTV

SPECIFICATIONS

Model	TVT-B28SPOE
Specifications	
Camera	
Image Sensor	1 / 2.8 "CMOS
Image Size	1920 × 1080
Electronic Shutter	1 / 25 s ~ 1 / 100000 s
Iris Type	Fixed Iris
Min. Illumination	0.005 lux@F1.6,AGC ON; 0 lux with IR 0.0028 lux@F1.2,AGC ON; 0 lux with IR
Lens	2.8 mm @F1.85, horizontal field of view: 99.7°
Lens Mount	M12
Wide Dynamic Range	Digital WDR
BLC	Yes
HLC	Yes
Defog	Yes
Digital NR	3D DNR
Angle Adjustment	Pan: 0°~360°; Tilt:0°~80°; Rotation: 0°~360°
Image	
Video Compression	H.265 / H.264 / MJPEG
H.264 Compression Standard	Baseline Profile/Main Profile/High Profile
Resolution	1080P (1920 × 1080), 720P (1280 × 720), D1, CIF, 480 × 240
Main Stream	60Hz : 1080P(1 ~ 30fps) / 720P(1 ~ 30fps) 50Hz: 1080P(1 ~ 25fps) / 720P(1 ~ 25fps)
Sub Stream	60Hz: D1/CIF/480x240 (1~30fps); 50HZ: D1/CIF/480x240 (1~25fps)
Bit Rate	128 Kbps ~ 4Mbps
Bit Rate Type	VBR / CBR
Audio Compression	G711A / U
Image Settings	ROI, Saturation, Brightness, Chroma, Contrast,Wide Dynamic, Sharpen, NR,etc. adjustable through client software or web browser
ROI	Each ROI to be configured separately
Interfaces	
Network	RJ45
Video Output	NO
Audio	NO
Storage	Built-in micro SD card slot; up to 128GB
Hardware Reset	Yes
Functions	
Remote Monitoring	Web browsing,CMS remote control
Online Connection	Support simultaneous monitoring for up to 3 users; Support multi-stream real time transmission
Network Protocol	UDP, IPv4, IPv6, DHCP, NTP, RTSP, PPPoE, DDNS, SMTP, 802.1x, UPnP, HTTPs, HTTP, QoS
Interface Protocol	ONVIF, GB-T/28181-2016
Storage	Network remote storage; micro SD card storage
Smart Alarm	Motion detection, SD card error, SD card full
General function	Watermark, IP address filtering, video mask, heartbeat, illegal login lock
PoE	Yes
IR Distance	20 ~ 30 m
Ingress Protection	IP67
Others	
Power Supply	DC12V/PoE
Power Consumption	< 6W

Operating Environment	- 30 °C ~ 60 °C (-22°F~140°F) Humidity: less than 95 % (non-condensing)
Dimensions (mm)	167.5 × 74.5 × 74.5
Weight (net)	Approx. 0.39KG
Installation	Ceiling mounting; wall mounting

DIMENSIONS



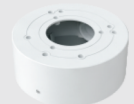
AVAILABLE ACCESSORIES



TD-YXH0301



TD-YXH0103



TD-YXH0104



TD-YXH0301+
TD-YZJ0501



TD-YXH0301+
TD-YZJ0601



TD-YXH0301+
TD-YZJ0810