

Network Camera Kit

TVT-4CHNVR-2CAMKIT-AI

4 Channel NVR with 2 x TVT-D2.8POE-AI Camera



Arrowhead
Alarm Products



Kit includes:

- 1 x 4 CH NVR with 4 x POE Ports
- 2 x 5MP 2.8mm Lens TVT-D2.8POE-AI Dome Camera
- 2 x 20m Ethernet Cable
- Supplied with 2TB HDD

Features:

- User friendly GUI
- Plug & Play CCTV
- Free app for iOS & Android
- 2 year return to base warranty

CCTV Solutions with



www.aap.co.nz

TVT-4CHNVR-P Specifications

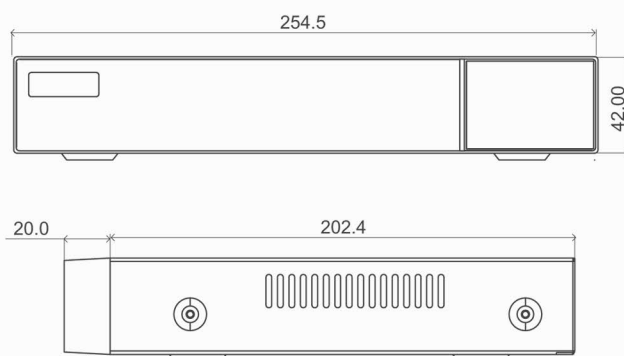
SPECIFICATIONS

Model		TVT-4CHNVR-P
System	OS	Embedded Linux
Video	Network Input	4 CH IPC input
	Network Input Resolution	6MP/5MP/4MP/3MP/1080P/1280×1024/960P/720P/960H/D1/CIF
	Output	HDMI × 1 : 1920 × 1080 / 1280 × 1024/ 1024 × 768 VGA × 1: 1920 × 1080 / 1280 × 1024/ 1024 × 768
	Compression	Standard H.265 / H.264
Audio	Network Input	4 CH IPC audio input
	2-way Audio	No
	Local Output	No (HDMI supports the audio output)
	Compression	G.711(U/A)
Record	Record Stream	Dual stream recording
	Resolution	6MP/5MP/4MP/3MP/1080P/1280×1024/960P/720P/960H/D1/CIF
	Frame Rate	6MP @20fps(NTSC/PAL); 5MP or lower @30fps/25fps(NTSC/PAL)
Playback	Simultaneous Playback	Max. 4 CH
	Search	Time slice / time / event / tag search / smart search
	Smart Search	Highlighted color to display the camera record in a certain period of time, different colors refers to different record events
	Function	Play, pause, FF, FB, digital zoom, etc.
Decoding Capability	Live View/ Playback	1CH 6MP; 4CH 720P
Alarm	Mode	Manual, sensor, motion, exception, smart events
	Input	Supports IPC alarm input
	Output	Supports IPC alarm output
	Triggering	Record, snapshot, buzzer, preset, e-mail, etc.
Network	Interface	RJ 45 100Mbps × 1
	Protocol	TCP / IP, PPPoE, DHCP, DNS, DDNS, UPnP, NTP, SMTP, HTTP, HTTPS, 802.1x
	Incoming Bandwidth	28 Mbps
	Outgoing Bandwidth	28 Mbps
Mobile Device	OS	iOS, Andriod
Storage	HDD Interface	SATA2.0 × 1, max 8T
Backup	Local Backup	U disk, USB mobile HDD
	Network Backup	Yes
Port	USB	USB 2.0 × 2
	Remote Controller	Optional
PoE	PoE Ports	100M RJ45 × 4
	Standards	IEEE802.3af
	Output Power	≤ 40W
Others	Power Supply	DC 48V/1.25A
	Consumption	< 6W (without HDD)
	Dimensions (mm)	255 × 222 × 42 (W × D × H)
	Working Environment	-10 ~ 50 °C , 10% ~ 90% humidity

Features

- Support 4/8 CH 6MP/5MP/4MP/3MP/1080P/1280×1024/ 960P/720P/960H/ D1/CIF IP video input
- Adopt standard H.265 and H.264 high profile compression format to get high-quality video at much lower bit rate
- Intuitive and user-friendly Graphic User Interface (GUI), Windows style operation by mouse
- Multi-mode recording: manual / timer / motion / sensor/smart events
- Playback : 4 /8CH simultaneous playback
- Search : time slice, time, event, tag, smart search
- Support multiple VCA (Video Content Analytics) events, such as object abandoned/missing, region intrusion, tripwire, video tampering, etc.
- Support POS information overlay on live view and playback
- Express and flexible backup via USB, network and so on
- Pentaplex : preview, record, playback, backup and remote access
- DHCP, DDNS, PPPoE network protocol
- Remote control via Web Client or CMS : preview, playback, backup, PTZ and configuration
- 4/8 PoE network ports, support IPC direct connection to NVR; support PoE power supply
- Dual stream technology for local storage with high definition, remote network transmission and remote surveillance with mobile device
- Multi-user online simultaneously
- Authorization management, log view and device status view
- 1080P output, true high resolution display
- Support NAT function and QRCode scanning by mobile phones
- Powerful mobile surveillance by smart phones with iOS and Android OS

DIMENSIONS



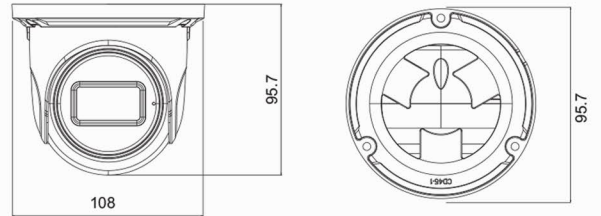
TVT-D2.8POE-AI Specifications

SPECIFICATIONS

Model	TD-9554S4			
Specifications				
Camera				
Image Sensor	1 / 2.7 "CMOS			
Image Size	2880×1620			
Electronic Shutter	1 / 1s ~ 1 / 10000s			
Iris Type	Fixed Iris			
Min. Illumination	0.007 lux @F1.6, AGC ON; 0 lux with IR			
Lens	2.8mm@F1.6, Horizontal FoV:110.5°;Vertical FoV:57°; Diagonal FoV:131°			
Focus	Fixed			
Lens Mount	M12			
Day&Night	ICR			
Wide Dynamic Range	120dB			
BLC	Yes			
HLC	Yes			
Digital NR	Yes			
Angle Adjustment	Pan: 0°~360°; Tilt:0°~90°;Rotation: 0°~360°			
Image				
Video Compression	Main stream: H.265+ / H.265 / H.264+ / H.264 Sub stream: H.265+ / H.265 / H.264+ / H.264 / MJPEG Third stream: H.265+ / H.265 / H.264+ / H.264/ MJPEG			
H.265 Compression Standard	Main Profile@Leve4.1 High Tier			
Resolution	5MP (2880 × 1620), 4MP (2560 × 1440), 3MP (2304 × 1296), 1080P (1920 × 1080), 720P (1280 × 720), D1, 480× 240, CIF			
Main Stream	60Hz: 5MP(1~20fps)/4MP/3MP/1080P/720P(1~30fps); 50Hz: 5MP(1~20fps)/4MP/3MP/1080P/720P(1~25fps)			
Sub Stream	60Hz: 720P/D1/CIF (1~30fps);50Hz: 720P/D1/CIF (1~25fps)			
Third Stream	60Hz: D1/480× 240/CIF (1~30fps);50Hz: D1/480× 240/CIF(1~25fps)			
Bit Rate	64 Kbps ~ 8 Mbps			
Bit Rate Type	VBR / CBR			
Image Settings	ROI, Saturation, Brightness, Hue, Contrast, Wide Dynamic, Sharpness, Image Mirror, Image Flip, NR, etc. adjustable through client software or web browser			
ROI	Each ROI to be configured separately			
Functions				
Remote Monitoring	Web browser /TVT NVR/NVMS2.X/Mobile APP			
Web Browser	IE (plug-in required)/Google Chrome/Edge/Firefox/Safari			
Online Connection	Support simultaneous monitoring for up to 10 users; Support multi-stream real time transmission			
Network Protocol	UDP, IPv4, IPv6, DHCP, NTP, RTSP, RTP, RTCP, PPoE, DDNS, SMTP, FTP, 802.1x, SNMP, UPnP, RTMP, HTTP, HTTPS, QoS			
Interface Protocol	ONVIF			
Storage	Network remote storage; micro SD card storage			
Smart Alarm	Motion detection, SD card full, SD card error			
Smart Event	Video Exception (scene change, video blur and video cast detection), line crossing detection, region intrusion detection, abandoned/missing object detection			
General Function	Watermark, IP address filtering, video mask, heartbeat, illegal login lock, corridor pattern			
PoE	Yes			
IR Distance	20 ~ 30 m			
Ingress Protection	IP67			
DORI Distance				
Lens	Detect	Observe	Recognize	Identify
2.8mm	59.67m(195.76ft)	23.87m(78.31ft)	11.93m(39.14ft)	5.97m(19.58ft)
3.6mm	71.10m(233.26ft)	28.44m(93.30ft)	14.22m(46.65ft)	7.11m(23.32ft)
6mm	97.97m(321.42ft)	39.19m(128.57ft)	19.59m(62.27ft)	9.80m(32.15ft)
Interfaces				
Network	RJ45			

Video Output	No
Audio	1CH audio input; 1CH built-in MIC
Storage	Built-in micro SD card slot, up to 256GB
Reset	Yes
Others	
Power Supply	DC12V/PoE
Power Consumption	< 5.5W
Operating Environment	- 30 °C ~ 60 °C (-22°F~140°F);Humidity: less than 95 % (non-condensing)
Storage Environment	- 30 °C ~ 65°C (-22°F~149°F), Humidity: less than 95 % (non-condensing)
Dimensions (mm)	Ø 95.7 × 108
Weight (net)	Approx. 0.46KG
Installation	Ceiling mounting(Wall mounting available with the junction box and bracket)
Certificate	CE, FCC
Environmental Protection	Complies with Directive EU RoHS, WEEE(2012/19/EU) , directive 94/62/EC and REACH(EC1907/2006)

DIMENSIONS

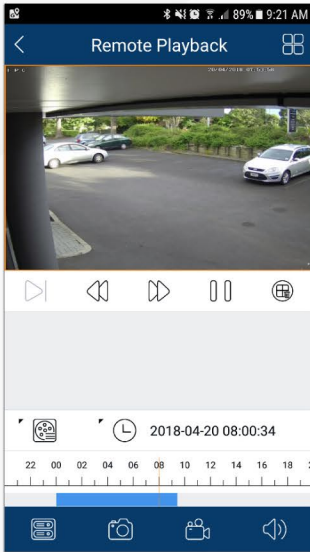


AVAILABLE ACCESSORIES

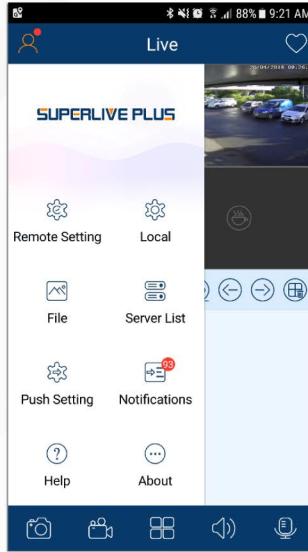


Smartphone App SuperCam Plus

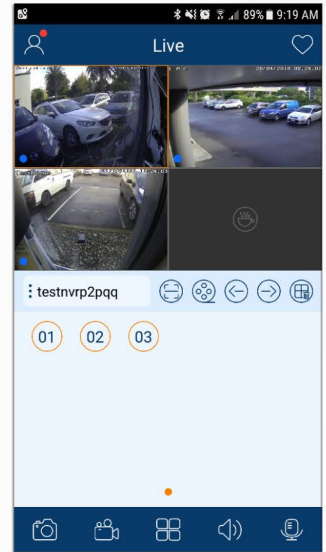
Search/Playback



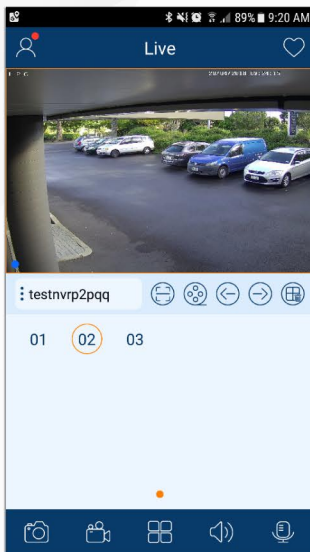
General Settings



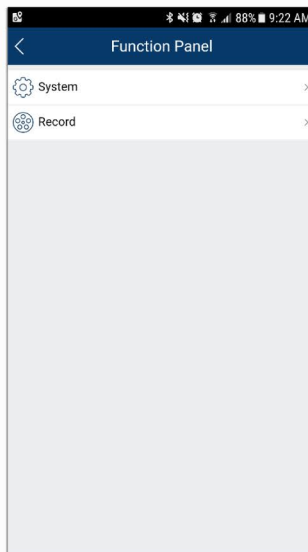
Select Camera



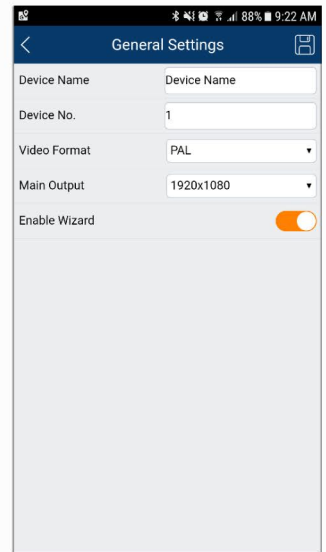
Single Camera View



Function Panel



Device Settings



SuperCam Plus



Proudly Supplied by Arrowhead Alarm Products
1A Emirali Road, Silverdale, 0932, Auckland, New Zealand
www.aap.co.nz