

Network Recorder

TVT-16CHNVR-P

16 Channel 4K NVR with 4TB Hard Drive



Arrowhead
Alarm Products



Features:

TVT brings to you an NVR which supports 16CH at (8MP/6MP/5MP/4MP/3MP/1080P/1280x1024/960P/720P) with a high definition IP input. This adopts the most advanced SOC techniques to ensure high definition recording in each channel at all times. With 16 PoE network ports this NVR supports 16CH IPC direct connection to the NVR, simultaneous 16CH playback and 4K high definition display.

Applications include:

- Home CCTV
- Commercial Premises
- Transport Hubs



Model		TD-3316H4-16P-B2
System	OS	Embedded Linux
Video	Compression	H.265S/H.265+/H.265/H.264
	IP Video Input	16CH IPC input
	Resolution	12MP/9MP/8MP/6MP/5MP/4MP/3MP/1080P/1280×1024/960P/720P/960H/D1/CIF
	Network Bandwidth	192Mbps/192Mbps (incoming/outgoing)
	Output	HDMI1: 3840 × 2160/1920 × 1080 / 1280 × 1024 / 1024 × 768 HDMI2: 1920 × 1080 / 1280 × 1024 / 1024 × 768 VGA × 1: 1920 × 1080 / 1280 × 1024 / 1024 × 768 VGA and HDMI1 output the same video source
	Multi-screen Display	Main output: 1/4/6/8/9/13/16 (live view) AUX output: 1/4/6/8/9 (live view) Max. 16+9CH local live view
Audio	Network Input	16 CH IPC audio input
	2-way Audio	RCA × 1
	Local Output	RCA × 1
	Compression	G.711(U/A)
Record	Record Stream	Dual stream recording
	Resolution	12MP/9MP/8MP/6MP/5MP/4MP/3MP/1080P/1280×1024/960P/720P/960H/D1/CIF
	Frame Rate	12MP: 20fps; 9MP or lower resolution: NTSC: 30fps; PAL: 25fps
Playback	Simultaneous Playback	Max 16CH
	Search	Time slice / time / event / tag / smart search
	Smart Search	Highlighted color to display the camera record in a certain period of time, different colors refers to different record events
	Function	Play, pause, FF, FB, digital zoom, etc.
Decoding Capability	Live View/ Playback	1CH 12MP/4CH 1080P
Alarm	Mode	Manual, sensor, motion, exception, smart events, etc.
	Input	16 CH local alarm input
	Output	4 CH
	Triggering	Record, snap, preset, e-mail, etc.
Face	Face Detection Performance (AI by IPC)	16CH
	Face Detection Performance (AI by Device)	2 CH (2MP)
	Face Match Performance	6 CH
	Comparison Capability	18 pictures / second
	Face Picture Database	32 libraries 10000 Face Pictures
	Face Picture Search	Search by picture is supported
	Database Management	Add, modify, delete and search face pictures
	Face Picture Adding	Add face pictures through APP, WEB and external import
	Face Picture Comparison	Support successful face recognition alarm and stranger match alarm
	Track	Track display on a map
Statistical Graph of Information	Statistical Graph of Information	Bar graph
	Statistical Mode of Information	Statistics by day, week, month, quarter as well as customized time period
Perimeter Protection	Human/Vehicle Classification (AI by IPC)	16CH
	Human/Vehicle Classification (AI by Device)	2CH (2MP)

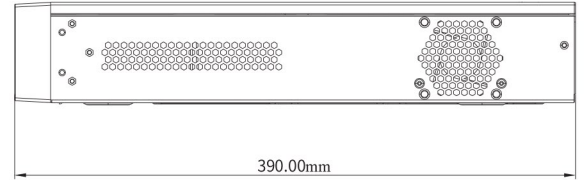
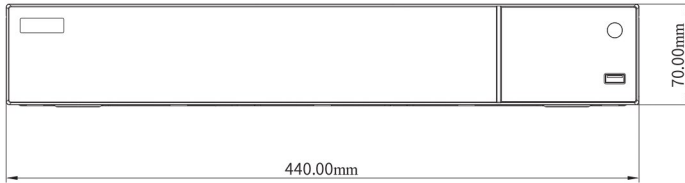
Video Metadata	Human/Vehicle Attribute Analysis (AI by IPC)	Yes
Other Functions	Fisheye	Supports fisheye dewarping via NVR/Web Client/mobile APP
	Plate Recognition (AI by IPC)	Yes
Network	Interface	RJ 45 1000 Mbps × 2
	Protocol	TCP / IP, HTTP, HTTPS, 802.1X, FTP, DHCP, DDNS, RTP, RTSP, RTCP, NTP, UPnP, SMTP, IPv6, IPv4, UDP, WebSocket, PPPoE, SNMP, IGMP
	Client Connection	Max. 64 users access
PoE	PoE Port	RJ 45 100Mbps × 16
	Standard	IEEE802.3AF/AT
	Output Power	≤ 150W
Mobile Device	OS	iOS, Andriod
Storage	HDD Interface	SATA × 4, max 10T for each HDD
	E-SATA Interface	E-SATA × 1
Backup	Local Backup	U disk, USB mobile HDD
	Network Backup	Yes
External Interface	RS 485	Yes (full-duplex), connect to PTZ or keyboard
	USB	USB 3.0 × 1 ; USB 2.0 × 2
	Remote Controller	Optional
Others	Power Supply	ATX 300W(PoE)
	Consumption	≤ 20W (without HDD and PoE power supply)
	Certificate	CE, FCC
	Environmental Protection	Complies with Directive EU RoHS, REACH and WEEE
	Dimensions(mm)	440 × 390 × 70(W × D × H)
	Working Environment	-10 ~ 50 °C, 10% ~ 90% humidity

Features

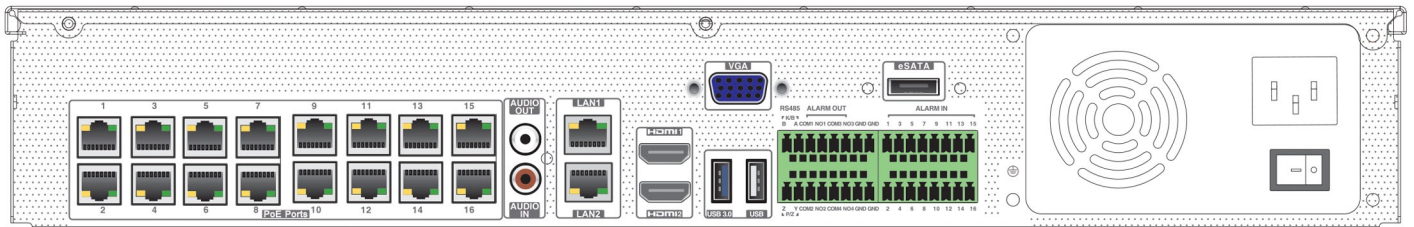
- Support 16CH 12MP/9MP/8MP/6MP/5MP/4MP/3MP/1080P/1280×1024/960P/720P/960H/D1/CIF IPC Input
- H.265S/H.265+/H.265/H.264
- Intuitive and user-friendly Graphic User Interface (GUI), Windows style operation by mouse
- Multi-type recording: manual / timed / motion / sensor / POS / AI recording
- Playback : 16 CH simultaneous playback
- Search : time slice, time, event, tag and smart search
- Support face detection and comparison
- Support multiple VCA (Video Content Analytics) events, such as object abandoned/missing, region intrusion, tripwire, video exception, etc.
- Support license plate recognition
- Support POS information overlay on live view and playback
- Pentaplex : preview, record, playback, backup and remote access
- DHCP, DDNS, PPPoE network protocol
- Compatible with third-party IPCs, such as ONVIF, Hikvision, etc.
- Remote control via Web Client or CMS : preview, playback, backup, PTZ and configuration
- Support 16CH PoE IPC direct connection to NVR via PoE ports
- Multi-user online simultaneously
- Authorization management, log view and device status view
- 4K output, true high resolution display
- Support PTZ preset and auto cruise, up to 255 presets and 8 cruises
- Support NAT function and QRCode scanning by mobile phones
- Powerful mobile surveillance by smart phones with iOS and Andriod OS



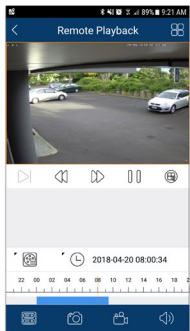
Dimensions



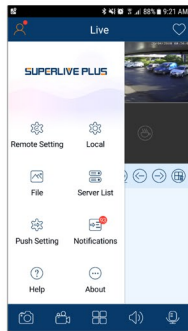
Rear Panel



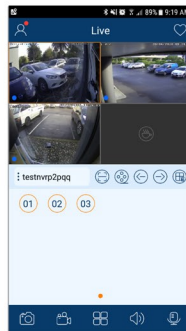
Search/Playback



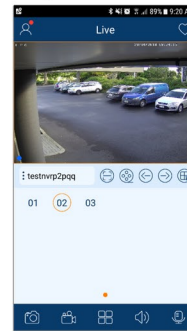
General Settings



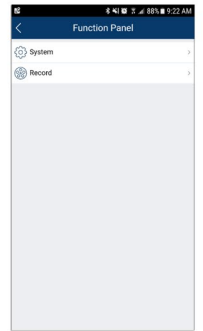
Select Camera



Single Camera View



Function Panel

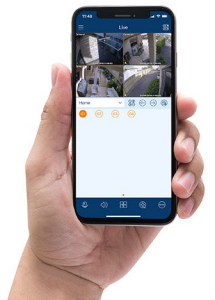


SuperCam Plus



Available on the App Store

Get it on Google play



Plug & Play CCTV