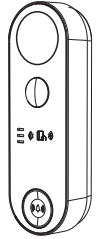


# Video Doorbell

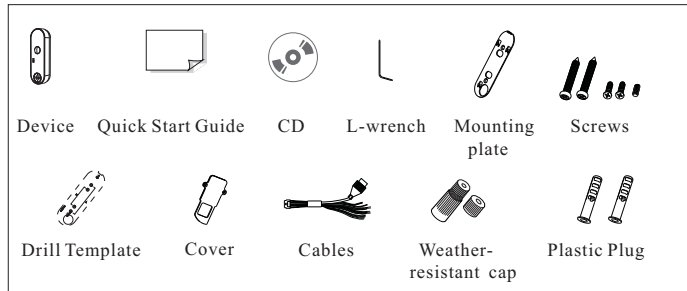
## Quick Start Guide



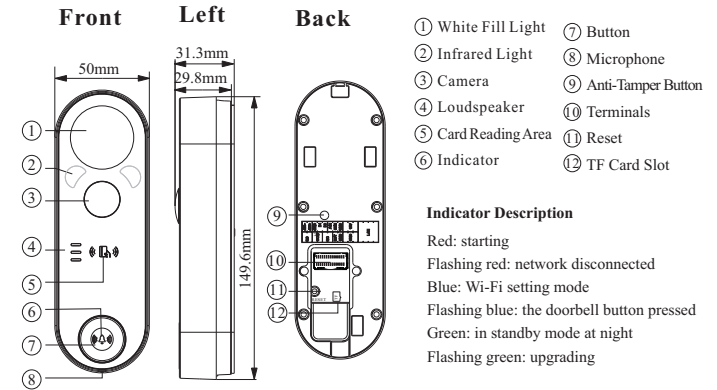
Use your phone to scan the QR code to download the mobile APP

Use the mobile APP to scan the QR code to quickly add the camera

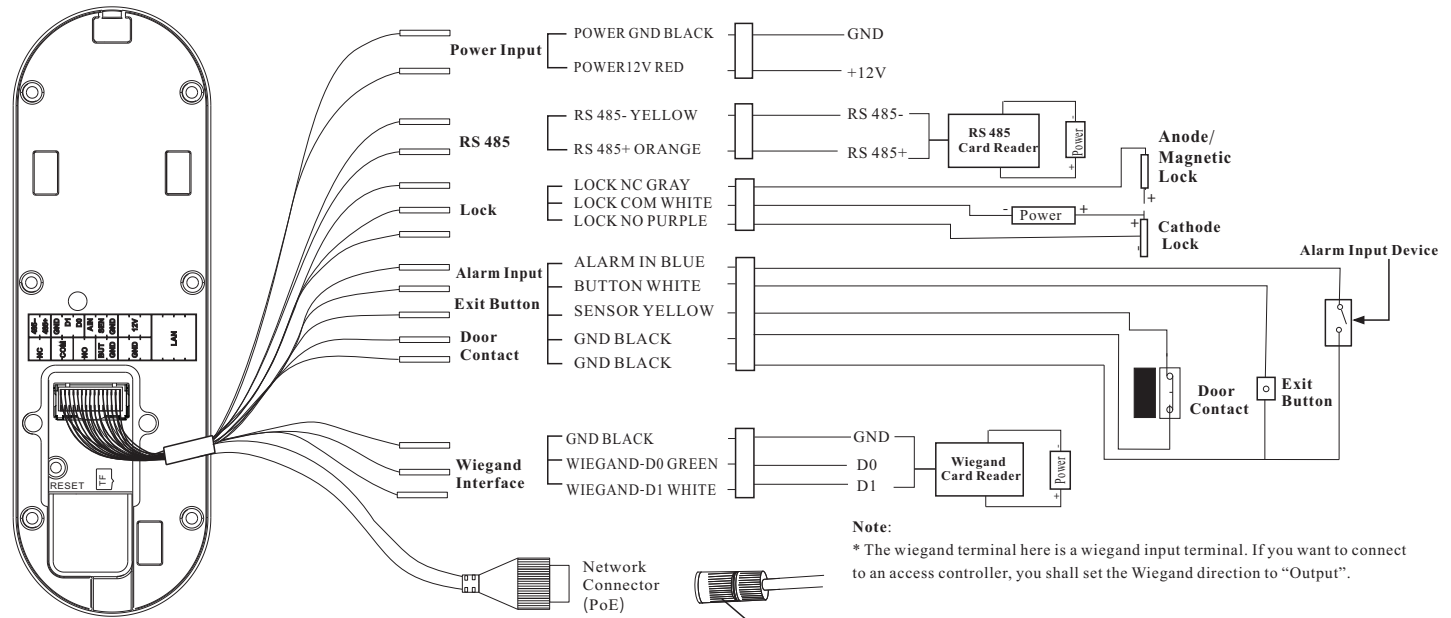
### 1 Package



### 2 Overview

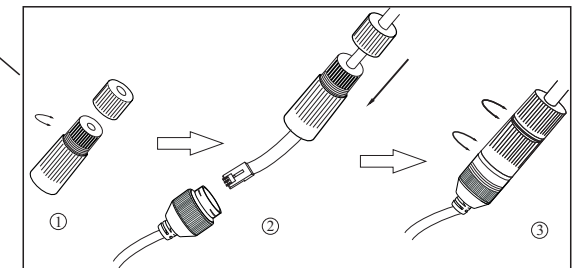


### 3 Cable Connection



**Note:**  
 \* The wiegand terminal here is a wiegand input terminal. If you want to connect to an access controller, you shall set the Wiegand direction to "Output".

- Loosen the nut from the main element.
- Run the network cable (without RJ 45 connector) through the both elements. Then crimp the cable with RJ 45 connector.
- Connect the cable to the network connector. Then tighten the nut and the main cover.



#### About This Manual

All pictures, images, icons and snapshots in this manual are for reference only. If there is inconsistency between the manual and the actual product, the actual product shall prevail. The manual will be updated according to the product improvement and are subject to change without prior written notice.

#### Legal Disclaimer

To the maximum extent permitted by applicable law, the product described, with its hardware, software, software and firmware, is provided "as is", with all faults and errors, and our company makes no warranties, express or implied, including particular purpose, and non-infringement of third party. In no event will our company, offices, or agents be liable to you for any special, consequential, incidental, or indirect damages, including, among others, damages for loss of business profits, business interruption, or loss of data or documentation, in connection with the use of this product, even if our company has been advised of the possibility of such damages. With regard to the product with internet access, the use of product shall be wholly at your own risks. Our company shall be irresponsible for abnormal operation, privacy leakage or other damages resulting from cyber attack, hacker attack, virus inspection, or other internet security risks; however, our company will provide timely technical support if necessary. During the use of the device, please strictly abide by applicable law. In the event of any conflicts between this manual and the applicable law, the later prevails.

#### Installation and Use

Please use our product according to the following safety instructions and warnings.

Do not place the camera in extremely hot, cold, or damp location.

Do not expose it to high electromagnetic radiation.

If the product does not work properly, please contact your dealer or the nearest service center.

Never attempt to disassemble the camera yourself. (We shall not be responsible for any problems caused by unauthorized repair or maintenance.)

Do not drop the camera or subject it to physical shock.

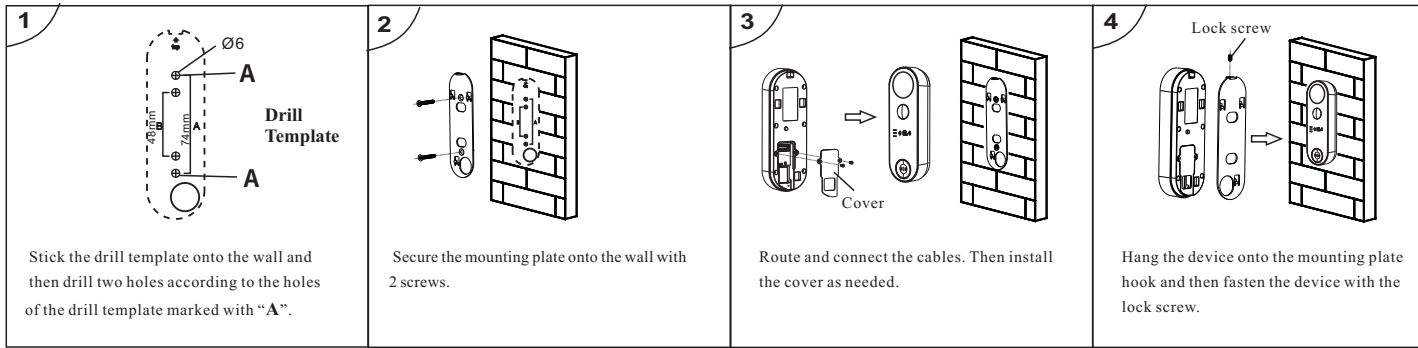
Keep away from liquid while in use.

Do not touch the screen with sharp objects.

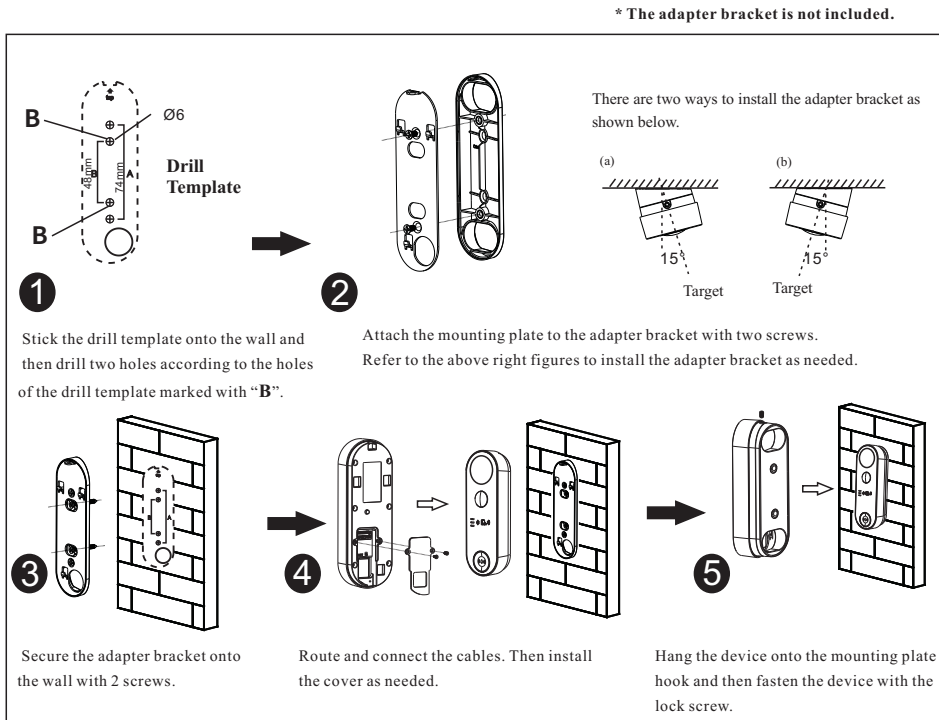
If cleaning is necessary, please use clean cloth to wipe it gently, avoiding water or alcohol.

## 4 Installation

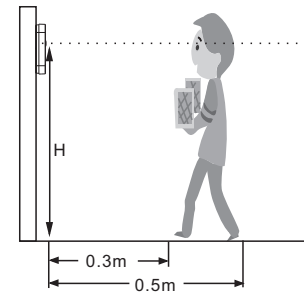
### Installation



### Mounting with Adapter Bracket



### Height Requirement

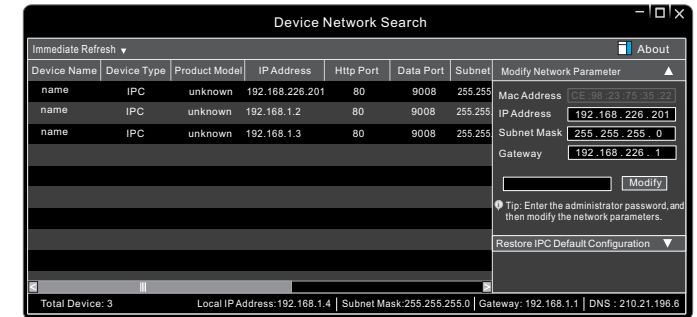


The recommended installation height (H) is 1.45m. It can be adjusted according to the actual scene.

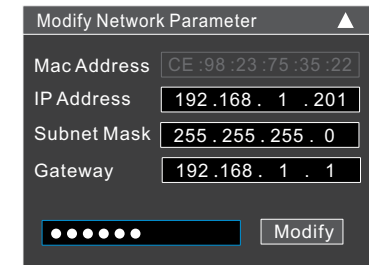
Height	Distance	Human Height Range
1.45m	0.3m	140cm~168cm
	0.5m	127cm~183cm
	1m	88cm~222cm

## 5 Network Connection

- Make sure that the device and the PC are well connected via LAN.
- Find the IP-Tool from the CD and then install it in the computer. After that, run the IP-Tool as shown below.



- Modify the IP address. The default IP address of this camera is 192.168.226.201. Click the information of the camera listed in the above table to show the network information on the right hand. Modify the IP address and gateway of the camera and make sure its network address is in the same local network segment as that of the computer. Please modify the IP address of your device according to the practical situation.



After modification, please enter the password of the administrator and click "Modify" button to modify the settings.

**⚠** The default password of the administrator is "123456".

**④** Double-click the camera listed in the IP-Tool or manually enter the IP address in the address bar of the web browser to connect IP-CAM.

Then follow directions to download and install the plugin.

**⑤** Enter the username and password in the login interface.

**⚠** The default username is *admin*; the default password is 123456.