

# Passive Infrared Detector

OPT-RX-40QZ-BKT



For Residential & Small Commercial Applications



Sensing innovation

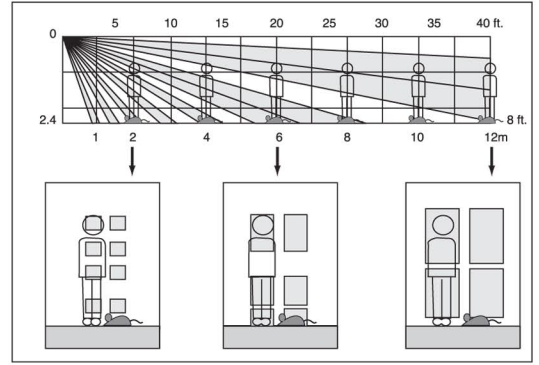
## Features

- Includes mounting bracket
- Quad Zone Logic
- Spherical Lens Design
- Temperature Compensation
- Sealed Optics
- Selectable Pulse Count (2 or 4)
- Factory setting (high sensitivity)
- High False Alarm Protection

### TECHNOLOGY FOR HIGHEST RELIABILITY

#### ●Quad Zone Logic - Improved Patented Technology

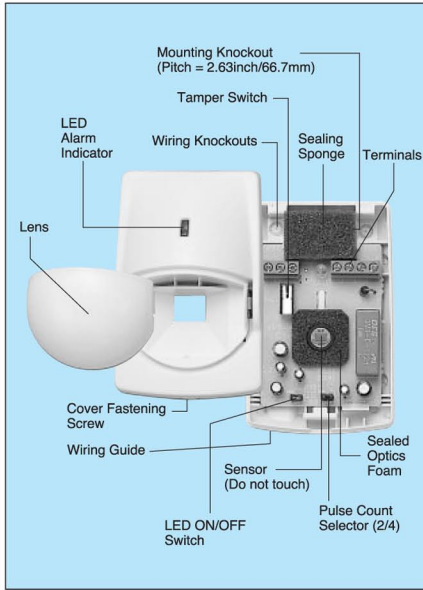
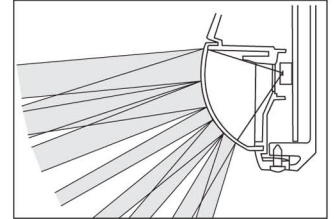
Quad Zone Logic provides multi segmented detection zones throughout the detection area. An alarm signal is created by the cumulated total IR energy of each zone. It is designed to provide 4 to 8 zones for a human sized object to create sharp and maximum signals for stable detection. Spot temperature changes, i.e. by rodents or curtains etc., may affect only one or two zones at the same time creating a smaller detection signal. These signals are further analysed by the "ECO" Chip and signal processing circuit for accurate detection and filtering out of false alarms.



#### ●Spherical Lens

##### - Technology to Back Up Quad Zone Logic

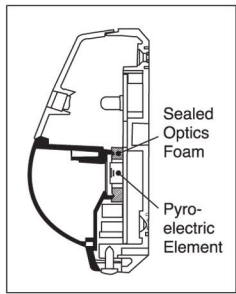
Obtains an accurate focal length for each detection zone and maximises the performance of Quad Zone Logic.



### TROUBLE-FREE & EASY INSTALLATION

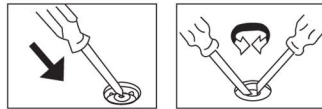
#### ●Sealed Housing

Prevents drafts and insects from reaching the pyro element.



#### ●Trouble-Free & Easy Knockouts

Simply push with a screwdriver to open a hole of matching size with the cables.



#### ●Durable Spherical Lens and Housing Design

#### ●Good Wiring Space and Guide

#### ●Selectable Pulse Count : 2 or 4

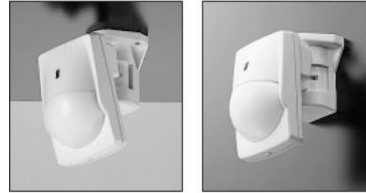
#### ●LED On/Off Switch

### PERFORMANCE

#### ●RFI Protection

No alarm at 20V/m from 100MHz to 1 GHz

#### ●Optional Multi-Angle Bracket



#### ●Temperature Compensation Logic

Eco chip includes temperature compensation circuit. It controls sensitivity to improve stability against changes in environmental conditions.

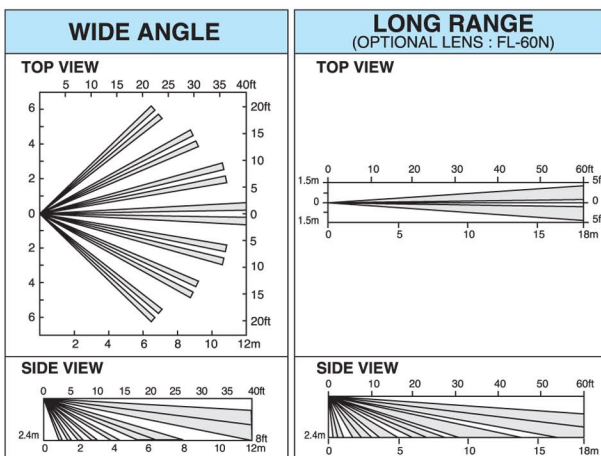
#### FA-3

Wall & Ceiling Mounting Bracket  
Horizontally ±45°, Vertically 0° to 15° downwards

#### FL-60N

Long Range (Extremely Dense Multi Layer Curtain Lens)

### DETECTION PATTERNS

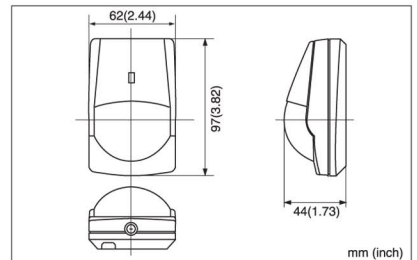


### SPECIFICATIONS

Model	RX-40QZ
Detection Method	Passive Infrared
Coverage	Wide: 12m x 12m (40ft x 40ft), 85° wide
Detection Zones	Wide: 78 zones
Mounting Height	1.5 ~ 2.4m (5 ~ 8ft)
Sensitivity	2° C at 0.6m/sec. (3.6° F at 2ft/sec.)
Detection Speed	0.3 ~ 1.5m/sec. (1 ~ 5ft/sec.)
LED Alarm Indicator	Switchable On/Off
Alarm Period	Approx. 2.5 sec.
Alarm Output	N.C., 28VDC, 0.2A max.
Tamper Switch	N.C., Open when cover is removed
Pulse Count	Approx. 20 sec. 2 or 4
Warm-up Period	Approx. 30 sec.
Power Supply	9.5 ~ 16VDC
Current Consumption	8mA (normal), 11mA (max.) at 12VDC
Weight	70g (2.5 oz.)
Operating Temperature	-20° C ~ +50° C (-4° F ~ +122° F)
Operating Humidity	95% max.
RF Interference	No Alarm 20V/m

*FL-60N (Optional Lens for Long Range Curtain Pattern)	
Coverage	Long: 18m x 1.8m (60ft x 6ft) Long Range
Detection Zones	Long: 20 zones

### DIMENSIONS



\* Specifications and design are subject to change without prior notice.

NOTE: This unit is designed to detect movement of an intruder and activate an alarm control panel. Being only a part of a complete system, we can not accept responsibility for any damages or other consequences resulting from an intrusion. This product conforms to the EMC Directive. 89/336 EEC.