

# Recessed PIR Detector

OPT-AP-360B(C)

360° low profile detector with multiple mounting options



**Arrowhead**  
Alarm Products



## Features

- Compact & discrete design
- Light control option
- Selectable detection sensitivity (low, medium & high)
- Tamper function
- Mounting options (ceiling or wall mount)

*Important note: this detector is **not** pet friendly*

# Specifications

OPT-AP-360B(C)



**Arrowhead**  
Alarm Products

## Specifications

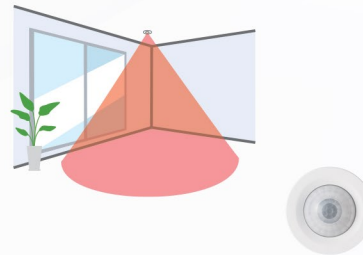
|                       |  |
|-----------------------|--|
| Detection method      | Passive infrared   |
| Detection area        | ø6 m (ø20') at mounting height<br>4.5 m (14'9")                            |
| Mounting height       | 2.5 to 4.5 m (8'2" to 14'9")   |
| Mounting type         | Recessed ceiling mount/86-type box mount                                   |
| Sensitivity           | 2.0°C at 0.6 m/s (3.6°F at 2'/s)   |
| Detection speed       | 0.3 to 3.0 m/s (1'/s to 9'10"/s)   |
| LED indicator         | Warm-up upon power on: blinking<br>Stand-by: off<br>Alarm: solid on        |
| Alarm cycle           | 2 s to 120 s (variable)  |
| Illuminance           | 20 to 320 lux (variable/not detected)                                      |
| Battery saving timer  | -  |
| Alarm output          | N.O./N.C., 28 V DC 200 mA max.   |
| Tamper switch         | N.C. 28 V DC 100 mA max.<br>The contact opens once the casing is detached. |
| Warm-up time          | Approx. 60 s   |
| Power supply          | 9.5 to 16 V DC   |
| Current               | 12 V DC<br>Stand-by: 11mA, Max.: 13 mA                                     |
| PIR sensitivity       | H/ M/ L  |
| Weight                | 50 g (1.76 oz)   |
| Operation temperature | -20 to +50°C (-4°F to +122°F)  |
| Operation humidity    | < 95%  |
| Location              | Indoors  |
| Dimensions            | ø52 x 42.5 mm (ø2.05 in. x 1.67 in.): without switch box mount             |
|                       | 86 x 86 x 42.5 mm (3.39 x 3.39 x 1.67 in.): with 86-type box mount         |

• Specifications and designs are subject to change without prior notice.

## Spot Detection Pattern

[Ceiling Mount]

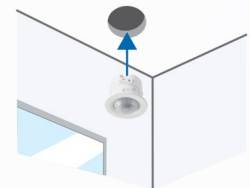
360-degree volumetric detection area



## Mounting Options

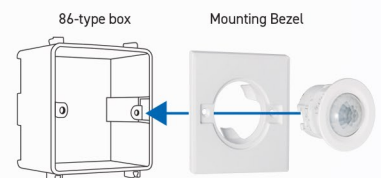
Recessed Mount

The detector can be installed with recessed mount on the walls / ceiling.



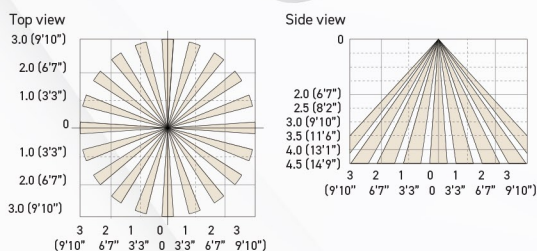
Recessed Mount with 86-type box

86-type box mount is available by using the included decorative plate.



## Detection Areas

[Ceiling Mount]



## Dimensions

