



# HM-SMOKE230

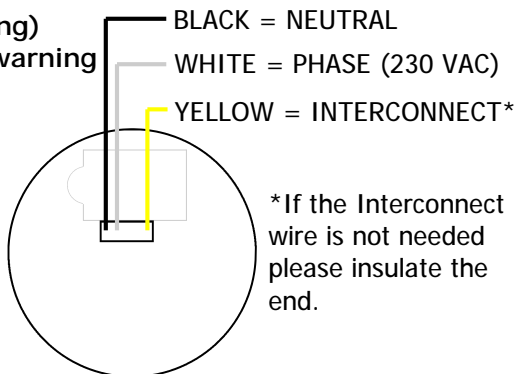
230v AC inter connectable smoke detector with battery backup and hush & test button.

## FEATURES:

- Auto-reset when smoke clears
- Self test/hush button
- 9 Volt battery backup (non charging)
- Low battery and missing battery warning
- 85 db internal warning sounder
- Inter connectable
- CE approved
- Photo Electric

## SPECIFICATION:

Operating Voltage. 230VAC 50Hz  
Current Standby 10uA  
Current Alarm 35uA  
Operating Temp. -10°C ~ +50°C  
Dimensions. Dia.128mm x 38mm



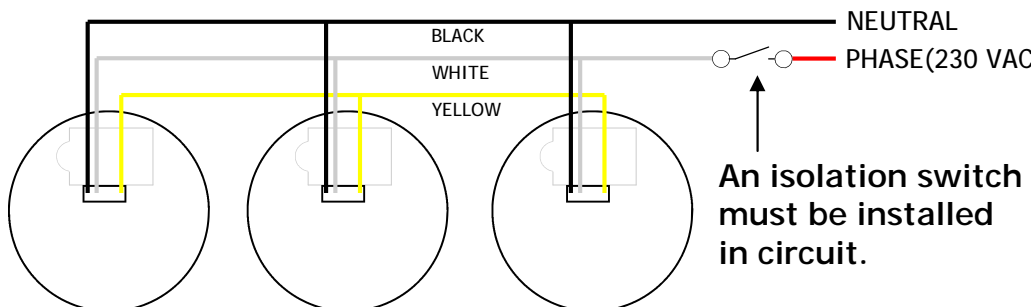


**Danger**  
High voltage

**Do not unplug cable until power is isolated.**

## INTER CONNECTING SMOKES

When the HM-SMOKE230's are wired in inter connectable mode, if one of the smoke detectors is triggered, all smokes in the circuit with go into alarm and activate there sounders.

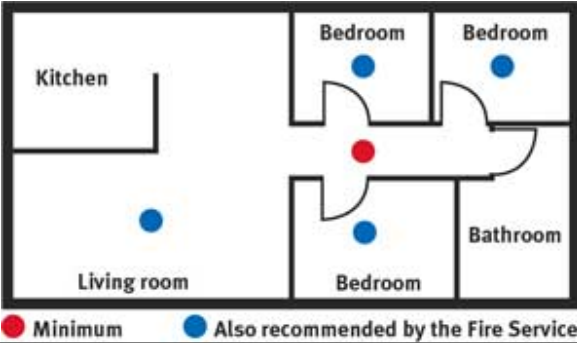


## Suggested Mounting Locations

Smoke alarms must be located in escape routes on all levels within the household unit.

On levels containing sleeping spaces, they must be installed within the sleeping space, or within 3 metres of every sleeping space door. And they must be audible through closed doors.

Always Refer to NZS 4514:2009 or the latest standard for full installation recommendations.



ARROWHEAD ALARM  
PRODUCTS Ltd.

1A Emirali Road,  
Silverdale 0932  
AUCKLAND  
Ph. 09 414 0085  
www.aap.co.nz

v1.04



**Arrowhead**  
Alarm Products

