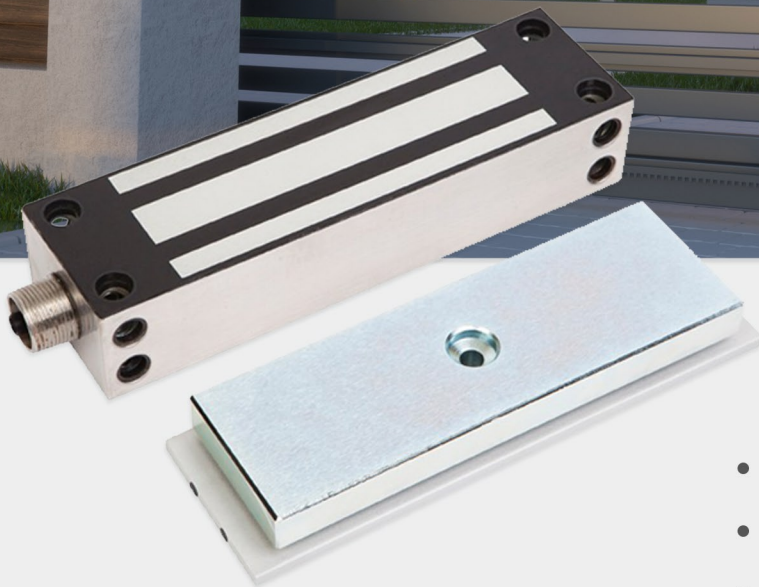


# Electro Magnetic Lock

FSHFEM5000G

12/24V DC Monitored High Quality Gate Lock



## Features

- Up to 630kg holding strength
- Lock Status Monitoring Sensor
- 304 Stainless Steel Body Housing
- IP67 Weather Resistant
- No Residual Magnetism
- Suitable for gates
- Anti Tamper Plate

Access Solutions with



2 Year

Warranty



Holding strength	Up to 630kg
Voltage & Current	Dual Voltage 12/24V DC 12V DC = 80mA 24V DC = 240mA
Monitoring	LSS
Dimensions	Magnet L220mm x W63mm x D45mm Armature Plate L190mm x W61mm x D16mm

### Mounting Details

