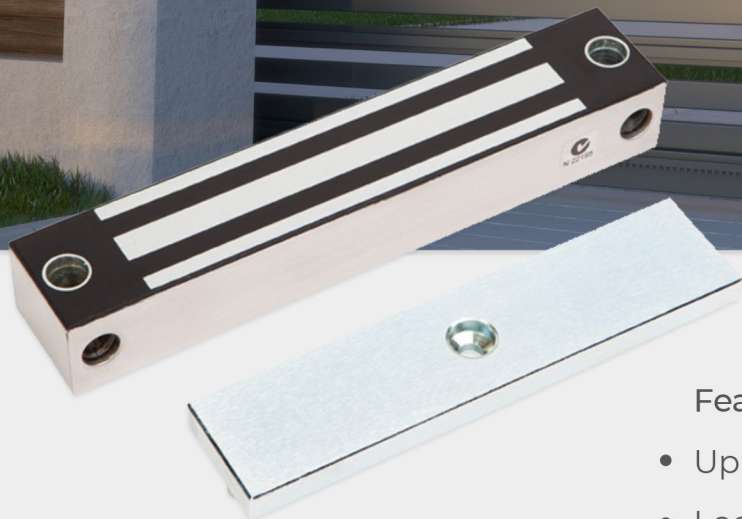
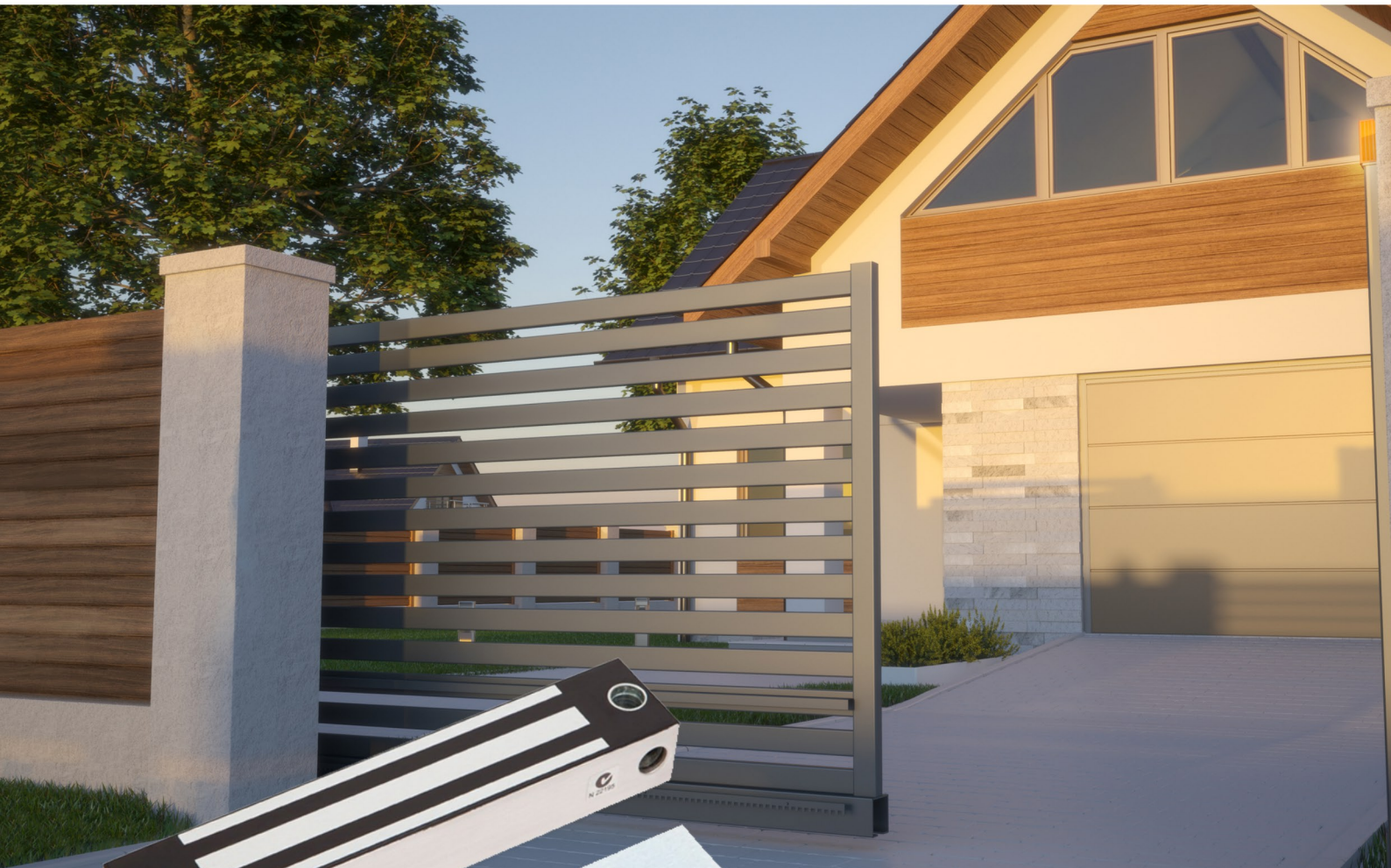


Electro Magnetic Lock

FSHFEM4700FS-LSS

12/24V DC Monitored 380kg Gate Lock



Features

- Up to 380kg holding strength
- Lock Status Monitoring Sensor
- 304 Stainless Steel Body Housing
- IP67 Weather Resistant
- No Residual Magnetism
- Suitable for gates

Access Solutions with



2 Year

Warranty



Holding strength	Up to 380kg
Voltage & Current	Dual Voltage 12/24V DC
	12V DC = 500mA
	24V DC = 250mA
Monitoring	LSS
Dimensions	Magnet L220mm x W47mm x D30.5mm
	Armature Plate L185mm x W42mm x D12mm

Mounting Details

