

EliteAlarms EC-i RS232 Manual v1.1

Plug in Serial Module for EC or EC-i Control Panels



Specifications

Compatibility EC or EC-i Control Panels

Pins

GND	0V Return
RX	Input
TX	Output
Dimensions	25 x 22 x 24mm

Features

The 'EC-i RS232' plugs directly into the 'EC' or 'EC-i' control panel to communicate with 3rd party devices via the control panels serial protocol.

Important

Serial over IP cannot be used in conjunction with this plug in 'EC-i RS232' module.



Hardware Setup Procedure

- 1. Power OFF the EC or EC-i control panel.**
- Plug 'EC-i RS232' directly into the 'EC' or 'EC-i' 'EXP B' port as shown in 'Figure 1'. Be sure to secure the module with the 2 x supplied stand-offs.
- Connect the Common/GND, RX & TX terminals to your 3rd party device serial communication port as detailed in 'Figure 2' below.
- Power up the control panel. There are no control panel settings for this module. I.e. Serial will begin to communicate automatically.

Figure 1

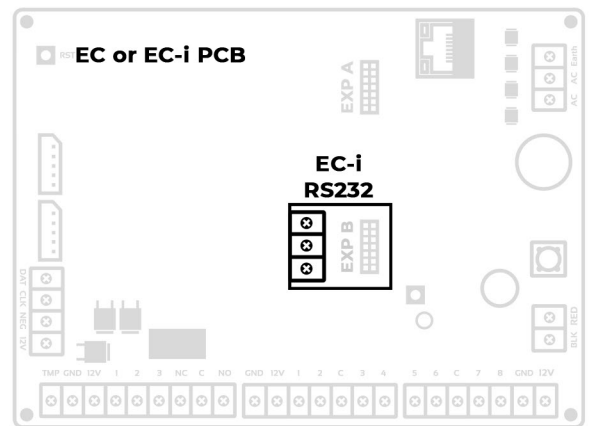
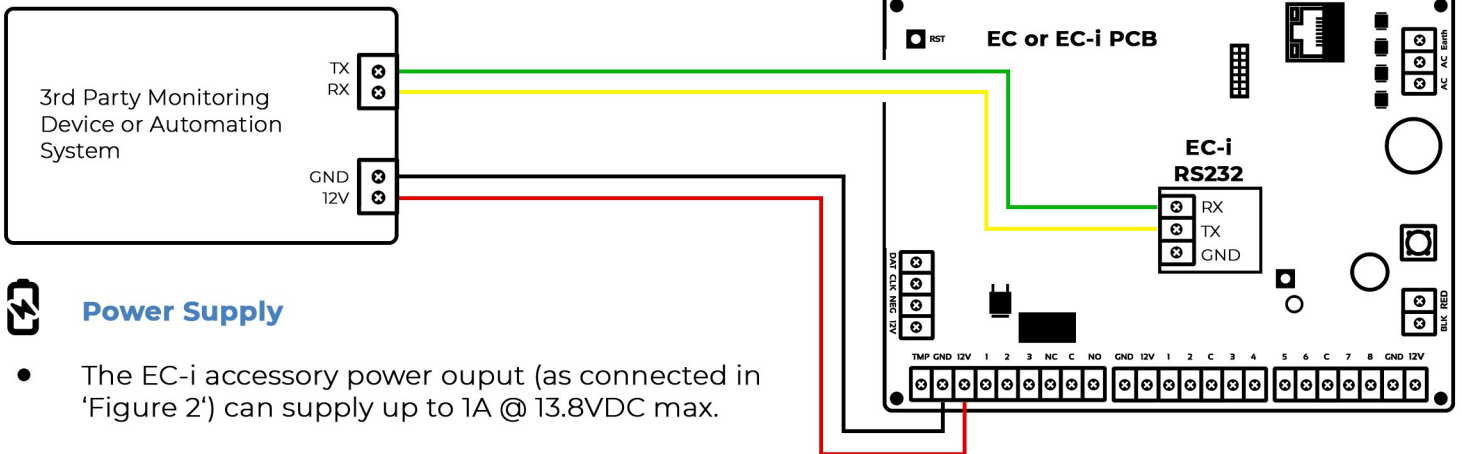


Figure 2



Power Supply

- The EC-i accessory power output (as connected in 'Figure 2') can supply up to 1A @ 13.8VDC max.

Web

elitealarms.com



LinkedIn

[linkedin.com/company/elite-alarms](https://www.linkedin.com/company/elite-alarms)

