

EliteAlarms EC-i DIALLER Manual v1.1

Plug in PSTN Dialler module for EC or EC-i



Specifications

Compatibility	EC or EC-i Control Panels
Power	Supplied from 'EC' or 'EC-i'
Installation	EXP A Port Only
Current Draw	50mA max
Jumper Pins	Listen-in ON/OFF
Terminals	Line in / Line Out
Dimensions	75 x 40 x 24mm

Features

The EC-i DIALLER plugs directly into the 'EC' or 'EC-i' control panel for connection to 3rd party monitoring devices, or traditional land lines.

Up to 8 phone numbers can be programmed into the control panel to dial in the event of a system alarm.

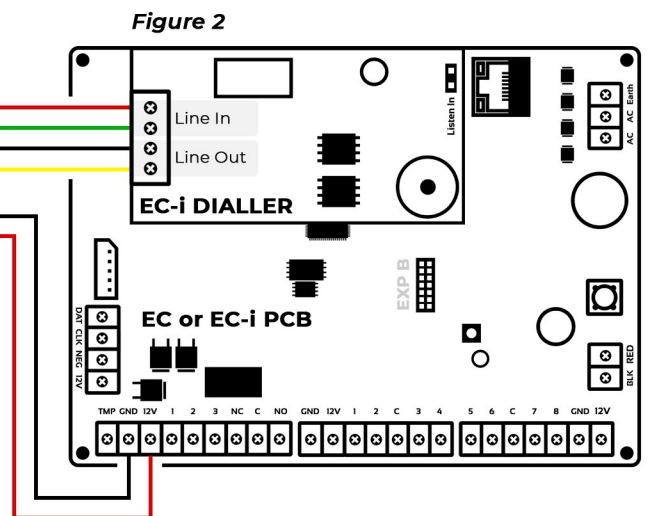
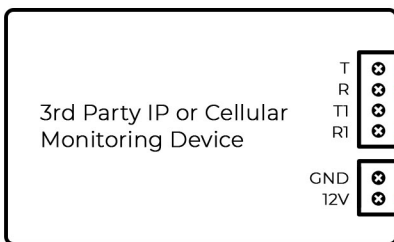
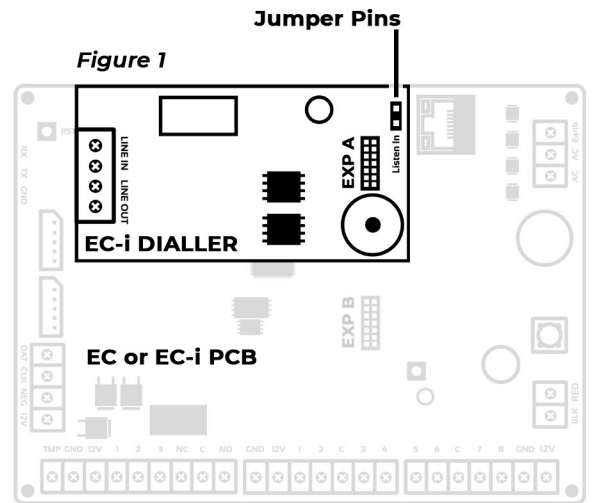


Hardware Setup Procedure

- 1. Power OFF the EC or EC-i control panel.**
- Plug 'EC-i DIALLER' directly into the 'EC' or 'EC-i' 'EXP A' port as shown in 'Figure 1'. Be sure to secure the module with the 2 x supplied stand-offs.
- Connect Line In & Line Out (if required) as per 'Figure 2' below, then power up the control panel.

Audible Dialler ON/OFF (See Figure 1 Jumper Pins)

- Audible Dialling ON = Jumper Pins Shorted
- Audible Dialling OFF = Jumper Pins Open Circuit



Power Supply

- The EC-i accessory power output as connected in 'Figure 2' can supply up to 1A @ 13.8VDC max.



Programming

- PSTN monitoring configuration is programmed via the 'EC' or 'EC-i' control panel built in web browser, Elite Installer Dashboard or traditional keypad address programming.

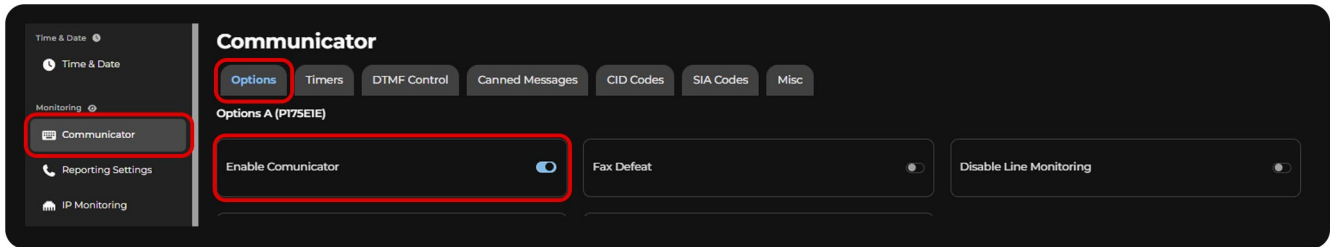
See the next page for dialler reporting programming.



Enable Communicator

1. Open your Elite Installer Dashboard (or the 'EC' or 'EC-i' built in web browser), then go to 'Communicator' > 'Options' > 'Enable Communicator' as detailed below:

This can also be configured via traditional keypad programming at address P175E1E



Format & Phone Numbers

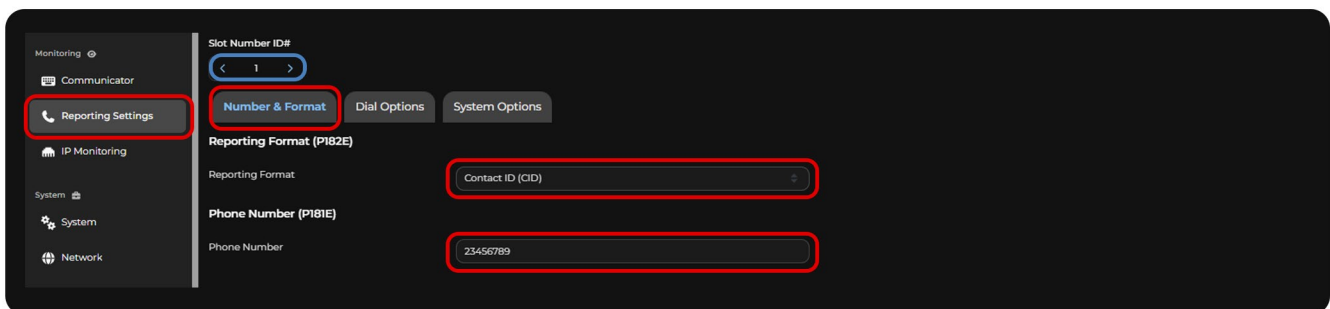
2. Go to "Reporting Settings" > "Number & Format" > "Reporting Format" dropdown menu & "Phone Number" fields as detailed below:

This can also be configured via traditional keypad programming at address P182E1-8E (Reporting Format) & P181E1-8E (Phone Number).

Common Dialer Format Options

- 'Domestic Dial' - Often used for traditional land line connections.
- 'Contact ID (CID)' - Often used when connected to 3rd party monitoring modules.

Important: Up to 8 different slots/phone numbers can be utilised to report sequentially, should the previous slot fail to be acknowledged. See 'Slot Number ID#' as detailed in blue below:



Troubleshooting & System Options

- Short the jumper pins (see Page 1, Figure 1) and try to activate or arm/disarm the system. You should hear an audible dialler noise if the 'EC-i DIALLER' is trying to communicate.
- See 'Reporting Settings' > 'Dial Options' & 'System Options' for more custom configuration.

Web
elitealarms.com

LinkedIn
linkedin.com/company/elite-alarms