

# Rechargeable Battery

DM12-22

Multi Purpose Sealed Lead Acid Battery



**Arrowhead**  
Alarm Products



## Dimensions & Weight

	Dimension (± 1 mm)			Weight (± 2%)	Terminal
	Length	Width	Height		
	181 mm	77 mm	167 mm	5.80 kg	T3
	7.1 inch	3.0 inch	6.6 inch	12.8 lbs	

## Constant Current Discharge \* Amperes @ 25 / 77°F

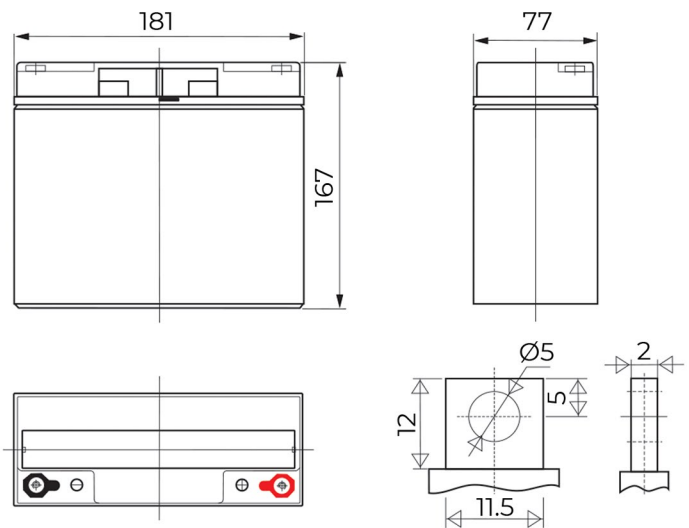
V/cell	15min	30min	1hr	3hr	5hr	10hr	20hr
1.60	40.51	23.27	12.77	6.20	4.15	2.17	1.15
1.65	38.73	22.34	12.33	6.01	4.04	2.14	1.13
1.70	36.28	21.35	11.93	5.85	3.94	2.11	1.11
1.75	33.76	20.41	11.49	5.68	3.84	2.08	1.10
1.80	31.20	19.51	11.05	5.50	3.74	2.06	1.08

## Constant Power Discharge \* Watts/cell @ 25 / 77°F

V/cell	15min	30min	1hr	3hr	5hr	10hr	20hr
1.60	70.82	42.26	24.00	11.85	8.00	4.26	2.25
1.65	68.70	41.00	23.31	11.53	7.82	4.22	2.22
1.70	65.32	39.58	22.699	11.27	7.64	4.16	2.20
1.75	61.67	38.22	21.99	10.98	7.48	4.11	2.17
1.80	57.75	36.90	21.27	10.68	7.31	4.06	2.16

\* The mentioned data is derived from a sample test result & for reference only\*

## Product Dimensions



Terminal T3

Unit: mm

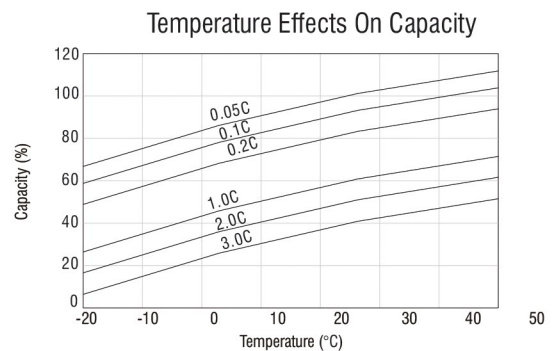
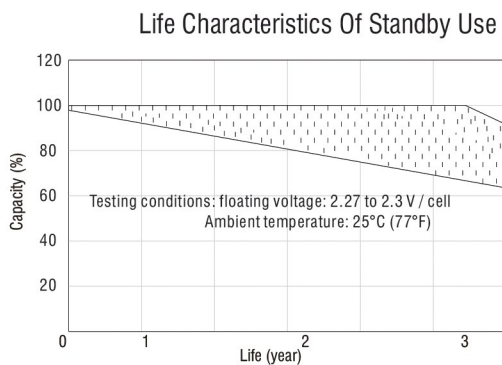
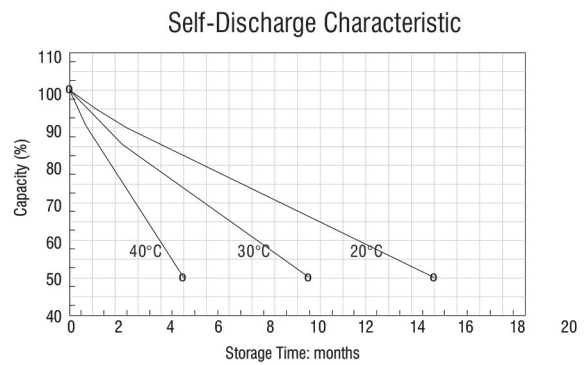
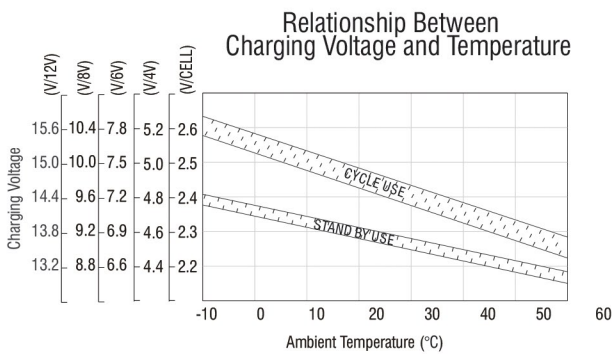
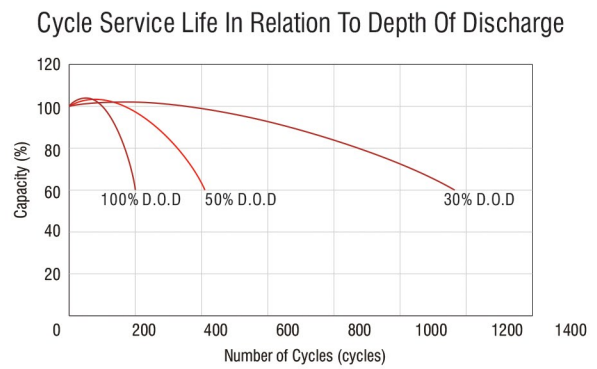
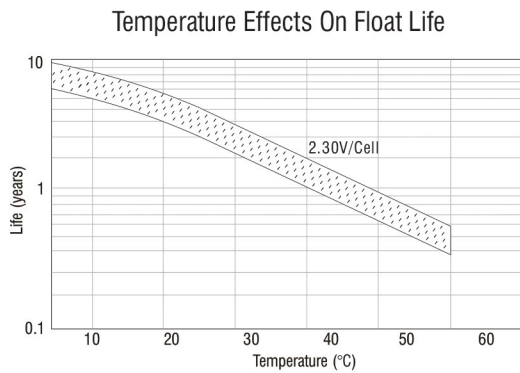
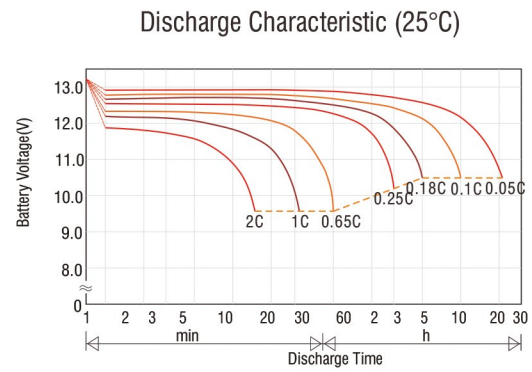
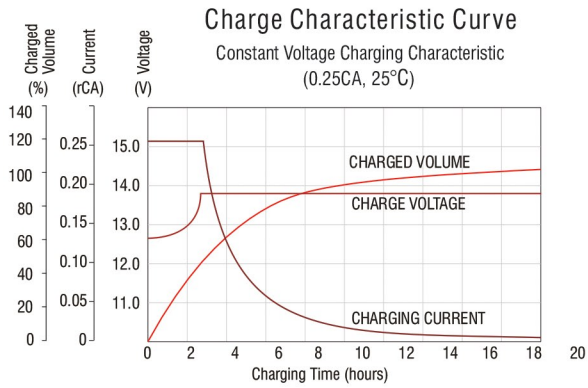
**1 Year** Warranty



# Specifications



**Arrowhead  
Alarm Products**



**Proudly Supplied by Arrowhead Alarm Products**  
 1A Emirali Road, Silverdale, 0932  
 Auckland, New Zealand  
[www.aap.co.nz](http://www.aap.co.nz)