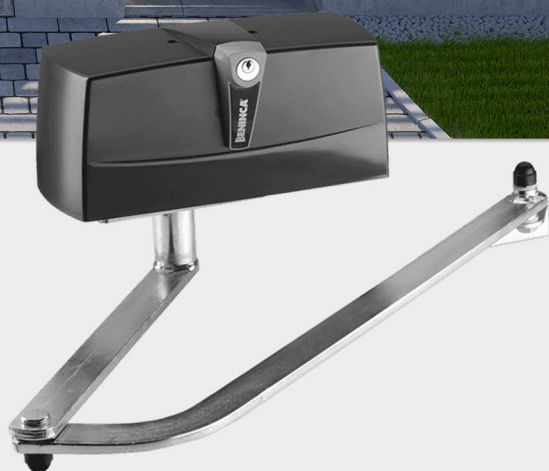


Swing Gate Automation

B-PR45E24

24V/DC Irreversible Geared Motor for Intensive Use



Features

- Up to 3m per gate leaf (note: arm not included)
- Irreversible 24 Vdc geared motor for intensive use
- Amperometric sensor obstacle detection system to prevent crushing
- Built-in electromechanical open and close limit switches
- Sturdy articulated anti-shearing arm in galvanised steel



B-PR45E24

Specifications



Motor supply	24 Vdc
Max absorbed current	9 A
Torque	320 Nm
Opening time	9"
Duty cycle	Intensive use
Protection level	IP44
Operating temperature	-20°C /+50°C
Lubrication	Grease
Leaf max dimension	3,0 m
Weight	9 kg



Control Unit

B-PR45E24 ——— B-BRAINY24

Product Dimensions

