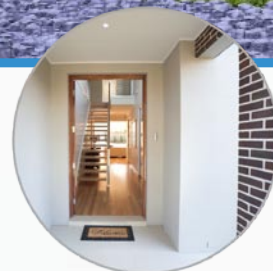


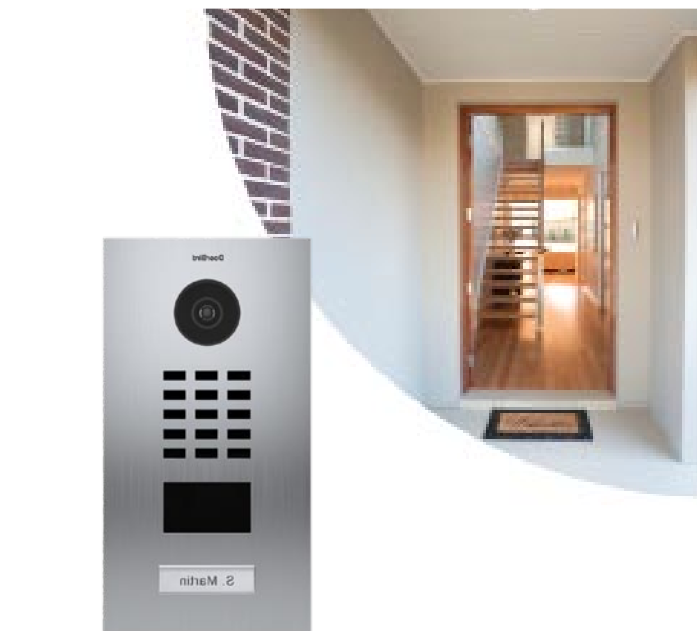
AAP Catalogue

Edition 21



Alarm Systems

For More View Page 5



For More View Page 56

Intercoms

Gate Automation

For More View Page 61



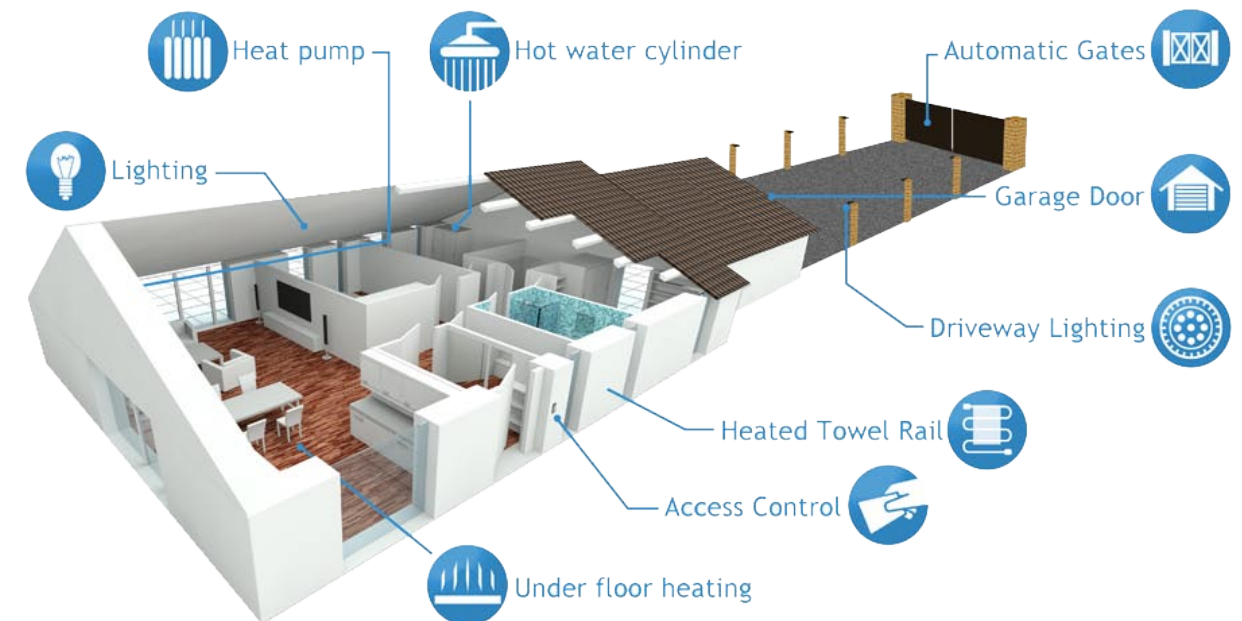
For More View Page 85

CCTV

Arrowhead Alarm Products was established in 1986 with a philosophy to provide top quality security equipment with an emphasis on expert back up & support. The Elite security & control system is designed and manufactured in our purpose built facility located in Albany industrial park

On site we have a specialised team of software and hardware engineers complimented by our lead free high speed pick & place manufacturing plant and multi stage quality control system. Each and every product we manufacture is also tested in house. This start to finish process makes us so confident that we put a 5 year warranty on everything we build

Our exclusive online technical support library and factory trained engineers provide unprecedented support for our loyal technicians



Intelligent Access, Control & Monitoring At Your Fingertips

ESL-2 APP POD



Elite Control KIT's

ESL-2 KIT's

ESL-2 PLAS

ESL-2 MET

FW2 Wireless Range

ESL-2 TRX KIT's

ESL-2 TRX KIT Accessories

ESX & EC System

ESL-2 Alarm Keypads

ESL-2 Alarm Panel Accessories

Piezos, Strobes & Alarm Sirens

Indoor & Outdoor Detection Devices

Wireless Detection

Reed Switches

Pendants & Transmitters

Radio Receivers & Decoders

Elsema Wireless Range

Monitoring & Cellular

Access Control

Mag Locks, Strikes & Door Holders

Intercoms

Gate Automation

Fire Accessories

Batteries

Security & CCTV Cable

Control Relays & Timers

Plastic Enclosures

Plugpacks

Power Supplies

Drill Bits

CCTV (IP & TVI)

Page

5

6

8

9

10

12

13

15

18

20

27

30

36

37

39

41

42

46

48

53

56

61

69

71

74

76

77

78

79

82

85

Alarm Systems



Innovative Security & Control



Section Includes

ESL-2 TRX Range

ESX Alarm System

ESL-2 Keypads

ESL-2 KIT's & Accessories

FW2 Wireless Range





EliteControl ESL-2 KIT's

Kit Includes

- ESL-2 8/16 Zone Control Panel
- Plastic Cabinet which includes transformer
- 2x Optex OPT-RXC-ST Detectors
- EC-SIREN External Siren
- PS209-R Internal Siren
- 4C2-100-CU 100m Box of Cable
- DM12-7.5 SLA Battery
- Plus Your Choice of Keypad

Alarm Kits



ESL-2 KIT-1

Full ESL-2 alarm kit, pre-programmed comes with E16LED KP + All kit items listed above



ESL-2 KIT-4

Full ESL-2 alarm kit, pre-programmed comes with KP-LCD-ST7OEM + All kit items listed above



ESL-2 KIT-6

Full ESL-2 alarm kit, pre-programmed comes with KP-ICON + All kit items listed above



ESL-2 KIT-7

Full ESL-2 alarm kit, pre-programmed comes with KP-ICON-OEM + All kit items listed above



ESL-2 KIT-7 NC

Full ESL-2 alarm kit, pre-programmed comes with KP-ICON-OEM + All kit items listed above (excludes 4C2-100-CU cable)



ESL-2 KIT-8

Full ESL-2 alarm kit, pre-programmed comes with KP-ICON-OEM-P + All kit items listed above



ESL-2 KIT-10-W

Full ESL-2 alarm kit, pre-programmed comes with EC-TOUCH W + All kit items listed above



ESL-2 KIT-10-B

Full ESL-2 alarm kit, pre-programmed comes with EC-TOUCH B + All kit items listed above



ESL-2 KIT-10-W NC

Full ESL-2 alarm kit, pre-programmed comes with EC-TOUCH W + All kit items listed above (excludes 4C2-100-CU cable)



ESL-2 KIT-10-B NC

Full ESL-2 alarm kit, pre-programmed comes with EC-TOUCH B + All kit items listed above (excludes 4C2-100-CU cable)

Alarm Kits

Consider adding the **ESL-2 APP POD** to your system

EliteControl Functions



Arm/Disarm



Stay in Arm/Disarm



Glass Break Sensor



Window Sensor



Indoor Sensor



Outdoor Sensor



Door Sensor



Garage Door Sensor



Smoke Detector



Heat Sensor

Plug in network module for ESL-2 security & control systems

- Plug & Play
- Pre Programmed
- App or IP Monitoring
- Push Notification Alerts
- Apple or Android Compatible

See page 47 for more information





EliteControl ESL-2 PLAS

Includes

- ESL-2 8/16 Zone Control Panel
- Plastic Cabinet which includes transformer
- Resistor Pack (2K2, 4K7 & 8K2)
- Plus Your Choice of Keypad

EliteControl ESL-2 MET

Includes

- ESL-2 8/16 Zone Control Panel
- Metal Cabinet which includes Transformer
- Tamper Switch & Resistor Pack (2K2, 4K7 & 8K2)
- Plus Your Choice of Keypad

Alarm Panels



ESL-2 PLAS

ESL-2 8/16 zone control panel in plastic cabinet No Keypad Included
+ All items listed above



ESL-2 PLAS-1

ESL-2 8/16 zone control panel in plastic cabinet with E16LED KP
+ All items listed above



ESL-2 PLAS-4

ESL-2 8/16 zone control panel in plastic cabinet with KP-LCD-ST7OEM
+ All items listed above



ESL-2 PLAS-6

ESL-2 8/16 zone control panel in plastic cabinet with KP-ICON
+ All items listed above



ESL-2 PLAS-7

ESL-2 8/16 zone control panel in plastic cabinet with KP-ICON-OEM
+ All items listed above



ESL-2 PLAS-8

ESL-2 8/16 zone control panel in plastic cabinet with KP-ICON-OEM-P
+ All items listed above



ESL-2 PLAS-10-W

ESL-2 8/16 zone control panel in plastic cabinet with EC-TOUCH W
+ All items listed above



ESL-2 PLAS-10-B

ESL-2 8/16 zone control panel in plastic cabinet with EC-TOUCH B
+ All items listed above



ESL-2 MET-S

ESL-2 8/16 zone control panel in EC surface mount metal cabinet.
(no keypad)



ESL-2 MET-S-7

ESL-2 8/16 zone control panel in EC surface mount metal cabinet with KP-ICON-OEM
+ All items listed above



ESL-2 MET-S-10W

ESL-2 8/16 zone control panel in EC surface mount metal cabinet with EC-TOUCH W
+ All items listed above



ESL-2 MET-S-10B

ESL-2 8/16 zone control panel in EC surface mount metal cabinet with EC-TOUCH B
+ All items listed above

Alarm Panels



FW2 Wireless Range

Feature & Options

- Complete 2-Way Wireless Range
- 916.5Mhz Frequency Across the Range
- Secure & Reliable Wireless Options
- Battery Operated
- Expected Battery Life up to 5 Years
- The Ultimate Wireless Solution

FW2 Range



FW2-CURTAIN

916.5Mhz wireless curtain detector, perfect for glass walls, windows & doors. Requires FW2-TX IN BOX transceiver & compatible with ESL-2 system



FW2-EDS3000-AM-915

916.5Mhz wireless double PIR sensor IP65 rated with pet immunity of up to 55kg. Requires FW2-TX IN BOX transceiver & compatible with ESL-2 system



FW2-GBD

916.5Mhz wireless glass break detector with detection range of up to 12m. Requires FW2-TX IN BOX transceiver & compatible with ESL-2 system



FW2-LCD KP 9F

916.5Mhz wireless graphical LCD keypad with time & date displayed. Requires FW2-TX IN BOX transceiver & compatible with ESL-2 system



FW2-MAG

916.5Mhz wireless magnetic door or window contact with up to 150m range (open space). Requires FW2-TX IN BOX transceiver & compatible with ESL-2 system



FW2-NEO

916.5Mhz wireless PIR detector with pet immunity of up to 25kg. Requires FW2-TX IN BOX transceiver & compatible with ESL-2 system



FW2-NEPTUNE BLUE

916.5Mhz wireless slimline outdoor siren IP55. Battery operated with 105dB sounder. Requires FW2-TX IN BOX transceiver & compatible with ESL-2 system



FW2-PANIC

916.5Mhz wireless panic button with wrist strap & neck cord. Requires FW2-TX IN BOX transceiver & compatible with ESL-2 system



FW2-REMOTE

916.5Mhz wireless multi purpose remote control for garage door, gate & much more. Requires FW2-TX IN BOX transceiver & compatible with ESL-2 system



FW2-SMOKE

916.5Mhz wireless smoke detector, battery operated with test button. Requires FW2-TX IN BOX transceiver & compatible with ESL-2 system



FW2-VESTA

916.5Mhz wireless internal siren, battery operated with a 100dB sounder. Requires FW2-TX IN BOX transceiver & compatible with ESL-2 system



FW2-TX IN BOX

916.5Mhz wireless transceiver compatible with all FW2 series products. Has up to 500m (in open space) range. Compatible with ESL-2 system

FW2 Range

ESL-2 TRX KIT's

Kit Includes

- ESL-2 8/16 Zone Control Panel
- Plastic Cabinet which includes transformer
- TRX Keypad
- 2x TRX PENDANT's & PIR's
- TRX External Siren
- TRX TRANSCEIVER-PCB
- DM12-3 SLA Battery
- PS209-R Internal Siren

ESL-2 TRX KIT Accessories

Features

- New Zealand Designed & Manufactured
- Maximum Range of 50m
- 2-Way Wireless
- Perfect For Retrofit Installations
- Full Range of Wireless Products

TRX Kits

ESL-2 TRX KIT-A1

Full wireless alarm kit, powered by 230V mains transformer, keypad runs off in-wall 230V PSU + All Kit Items Listed Above

ESL-2 TRX KIT-A2

Full wireless alarm kit, powered by 300mA plug pack, keypad runs off in-wall 230V PSU + All Kit Items Listed Above

ESL-2 TRX KIT-C1

Full wireless alarm kit, powered by 230V mains transformer, keypad runs off rechargeable back plate (Lithium-ion smart battery) supplied with plug pack charger + All Kit Items Listed Above

ESL-2 TRX KIT-C2

Full wireless alarm kit, powered by 300mA plug pack, keypad runs off rechargeable back plate (Lithium-ion smart battery) supplied with plug pack charger + All Kit Items Listed Above

TRX Accessories

TRX TRANSCEIVER-PCB

Hardwire to an Elite S Series control panel & this board will allow all 2-Way wireless products to control & be controlled by the panel

TRX MAINS

TRX wireless 230V mains switch, capable of controlling lighting, heat pump, heated towel rail, under floor heating & more

TRX KEYPAD-A

Full 2-Way wireless LCD icon display keypad, updated from panel in real time. Run up to 8 keypads on the system. With 230V in-wall mains PSU & 2x CR2450 battery backup

TRX KEYPAD-C

Full 2-Way wireless LCD icon display keypad, updated from panel in real time. Run up to 8 keypads on the system. Includes rechargeable back plate, Lithium-ion smart battery & plug pack

TRX EXTERNAL

2-Way wireless external siren strobe unit. Runs up to 3 Years on a single C-Size Lithium battery. Flash lamp or chirp siren for Arm & Disarm indication. Fully supervised, 104dB

TRX HEAT

2-Way wireless heat detector, battery operated 9V alkaline with built in 85dB sounder & test button. Surface mount, thermal detector 57 degrees

**TRX SMOKE**

2-Way wireless photoelectric smoke detector with built in 85dB sounder. Includes 9V alkaline battery & surface mount base

**TRX INTERNAL**

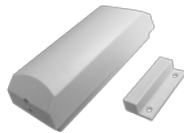
2-Way wireless internal siren. You can have up to 3 years on a single C-size lithium battery. Fully supervised which can provide a door chime from wireless call point or full alarm tones at 104dB

**TRX OUTPUT**

2-Way wireless relay output (Battery Powered). This unit takes commands from the ESL-2 to operate 2 doors &/or gates via key code, zone inputs, time zone of hand held transmitter

**TRX PIR**

2-Way wireless PIR detector fully supervised (Low Current). The PIR is pet friendly up to 25kg

**TRX REED**

2-Way wireless reed switch for securing doors & windows. Indicates open or closed status to the control panel with hard wired Input

**TRX MAINS KIT**

Wireless 230V mains switch & transceiver. Kit includes 1x TRX MAINS switch & 1x TRX TRANS-CEIVER-PCB wireless transceiver board

**IR REMOTE-10**

Programming tool for TRX MAINS. The remote allows you to select the output from the ESL-2 that the TRX Mains follows

**TRX PENDANT**

Hand held 4 Button 2-Way wireless transmitter for Arming, Disarming & Output control. Contains 1x CR2032 battery

ESX System**Features**

- 8/16 Zones Onboard
- Onboard Ethernet & Dialler
- 32 Areas & up to 32 Keypads
- Expandable to 64 Zones & 32 Outputs
- 2000 Users & up to 32 Door Access Control

**ESX-1**

ESX V2. Control Panel (PCB only). Capable of up to 64 zones & 32 outputs. Dimensions 164mm x 102mm x 32mm

**ESX-1 PLC/U**

Elite SX control panel in plastic cabinet with 17VAC 1.4A transformer

**ESX-KPI**

Full English text LCD keypad for ESX series. Multi function with assignable buttons

**ESX-KPI-P**

Full English text LCD keypad for ESX series. Multi function with assignable buttons & built in proximity reader for access control

**EC-TOUCH W**

5" Touch Keypad with white surround, compatible with ESL-2, ESX, ESL, ELITE S & ELITE S LITE. Dimensions W143 x H103 x D15mm

**EC-TOUCH B**

5" Touch Keypad with charcoal surround, compatible with ESL-2, ESX, ESL, ELITE S & ELITE S LITE. Dimensions W143 x H103 x D15mm

**EC-PSU2**

13.8V 1.4A Plug on Power Supply for EC-A2, O4 & Z8 (battery backup)

**ESX-RS232**

RS232 plug on module for the ESX control panel. Allows 2-way communication between the ESX & automation system

**ESX-KP EXTEND**

ESX keypad bus extender, up to 200m cable run with keypad extender located in the middle of the run

**ESX READER USB**

125K proximity reader for simple prox card entry into the ESX system. Simple scan to panel technology

**EC-SCC ADAPTER**

Adapter Mounting Plate for ESL-2, ESX range (requires EC-SCC PLATE)

**EC-SCC BATT**

Battery Holder for Structured Cabling Cabinet (for 5, 7 & 9A batteries)

**EC-SCC PLATE**

Mounting Plate for Structured Cabling Cabinet

**EC-SCC PSU**

24VDC 2.2A Power module with IEC for Structured Cabling Cabinet

**WIEGAND-MINI**

Wiegand Interface for ESL-2, ESX systems. 12VDC required, featuring 1 input & 1 output. Compatible with ESL-2 & ESX system

**EC-A2**

2 Door Access Control Module for EC/ESX & ESL-2 Security System

**EC-O4**

4 Relay Output Expander for EC/ESX Security System

**EC-Z8**

8 Zone Expander for EC/ESX Security System

**PW WIEGAND**

Outdoor prox/PIN reader. IP66, 40 bit wiegand with backlit keys. Used with EC-A2

**PW WIEGAND-NK**

Outdoor waterproof prox reader (no keypad). 40 bit wiegand, used with EC-A2

**PW WIEGAND-SKI**

40 bit wiegand 8-18VDC keypad. IP65 with blue backlit keys & built in prox reader. Used with EC-A2

**PW WIEGAND-SK4**

40 bit wiegand 8-18VDC keypad (architrave style). IP65 with blue backlit keys & built in prox reader. Used with EC-A2

**SCC-20**

20" structured cabling cabinet (flush mount). Dimensions 355 x 575 x 90mm. Can be used with EC-SCC plates & expander modules

**SCC-28**

28" structured cabling cabinet (flush mount). Dimensions 725 x 355 x 90mm Can be used with EC-SCC plates & expander modules



ESL-2 Alarm Keypads

Features & Options

- 5" Touch Keypad (in Charcoal or White)
- LCD Keypads (Full English)
- LED Keypads (Compatible with Legacy Panels)
- LCD Icon with Time & Temp Display
- Wide & Slimline Keypads
- Wireless Keypads (TRX)



EC-TOUCH W

5" Touch Keypad with white surround, compatible with ESL-2, ESL, ESX, ELITE S & ELITE S LITE. Dimensions W143 x H103 x D15mm



EC-TOUCH B

5" Touch Keypad with charcoal surround, compatible with ESL-2, ESL, ESX, ELITE S & ELITE S LITE. Dimensions W143 x H103 x D15mm



EC-TOUCH W PROX

5" Touch Keypad with white surround, includes built in prox. Compatible with ESL-2, ESL, ESX, ELITE S & ELITE S LITE. Dimensions W143 x H103 x D15mm. Includes 2x PROX EM4100 tags



EC-TOUCH B PROX

5" Touch Keypad with charcoal surround, includes built in prox. Compatible with ESL-2, ESL, ESX, ELITE S & ELITE S LITE. Dimensions W143 x H103 x D15mm. Includes 2x PROX EM4100 tags



EI6LED KP

16 LED keypad (wide style). Compatible with ESL-2, ESL, Elite S, Elite S Lite, Elite 16D v6 & Elite 8D. Dimensions L137mm x W124mm x D28mm



KP-ICON

Icon LCD keypad (wide style) with time & temperature display. Compatible with ESL-2, ESL, Elite S & Elite S Lite. Dimensions L137mm x W124mm x D28mm



KP-ICON-OEM

Icon LCD keypad, displays time & temperature. Features zone input compatible with ESL-2, ESL, Elite S & Elite S Lite. Dimensions L134mm x W88mm x D24mm



KP-ICON-OEM P

Icon LCD keypad with built in prox reader for easy arm/disarm with tags. Features zone input compatible with ESL-2, ESL, Elite S & Elite S Lite. Dimensions L134mm x W88mm x D24mm



ESX-KP1

Full English text LCD keypad for ESX series. Multi function with assignable buttons. Dimensions L134mm x W88mm x D24mm



ESX-KP1-P

Full English text LCD keypad for ESX series. Multi function with assignable buttons & built in prox reader for access control. Dimensions L134mm x W88mm x D24mm



KP-LCD-ST7OEM

Full English LCD keypad (slim OEM style). Compatible with ESL-2, ESL, Elite S & Elite S Lite. Dimensions L134mm x W88mm x D24mm



TRX KEYPAD-A

Wireless TRX keypad for the ESL-2 TRX KIT's. Includes an in-line 230V mains power supply and 2x CR2050 batteries. Dimensions L137mm x W124mm x D28mm



TRX KEYPAD-C

Wireless TRX keypad for the ESL-2 TRX KIT's. Includes rechargeable back plate and plug pack. Dimensions L137mm x W124mm x D28mm



ELITE 16 KP

16 LED keypad for legacy systems. Version 4 & 5 Elite 16D compatible. Dimensions L137mm x W124mm x D28mm



ESL-2 Alarm Panel Accessories

Features

- 8/16 zones onboard
- Optional plug-in smartphone upgrade
- Optional plug-in dialler
- 4 Outputs (4 open collector & 1 NO/NC)
- NZ designed & manufactured
- Control & monitoring options available



ARR14

Keypad bus loom (300mm). Easy fit hook up cable for keypads & radio receivers. Used with RX-16 MF4, MF9 & IP-MODULE



ARR15

Keypad bus loom (1500mm). Easy fit hook up cable for keypads & radio receivers. Used with RX-16 MF4, MF9 & IP-MODULE



RX-16 MF4

Bus controlled 433Mhz receiver. Works with the ESL-2 control panel. Dimensions L101mm x W65mm x D18mm



RX-16 MF9

Bus controlled 915Mhz receiver. Works with the ESL-2 control panel. Dimensions L101mm x W65mm x D18mm



RM-0001A KIT

2x 4 button RM-0001A remotes (433Mhz) & 1x RX-16 MF4 single frequency receiver. Works with ESL-2 control board to operate your garage door & more



RM-8003B KIT

2x 4 button RM-8003B remotes (915Mhz no cover) & 1x RX-16 MF9 single frequency receiver. Works with ESL-2 control board to operate your garage door & more



RM-8006B KIT

2x 4 button RM-8006B remotes (915Mhz) & 1x RX-16 MF9 single frequency receiver. Works with ESL-2 control board to operate your garage door & more



ESL-2

ESL-2 manufactured PCB with 8 normal EOL zones (capable of 16 zone doubling). Outputs, 4x open collector & 1x NO/NC. 1A relay (all customisable)



ESL-2 APP POD

Plug on App/IP-Module for ESL-2 System. Requires EliteControl app (\$15.00) on your smartphone



ESL-2 4G POD

Plug on 4G-IP module for cellular monitoring of the ESL-2 alarm system



ESL-2 DIAL POD

Plug on Dialler for ESL-2 System for land-line & third party monitoring



IP-MODULE

Universal LAN to PSTN reporting module for monitoring over internet. Can be put on any alarm panel. Pre-configured for App control



IP-LOOM

Allows remote ULD software programming of ESL-2 series . Requires IP-MODULE. Note requires advanced IT knowledge



ESL-2 RTC

ESL-2 board with real time clock

**WiFi KIT**

Pre programmed pair of wifi modules (1x master & 1x slave). Simply plug the master into your router & the slave into the IP-MODULE, connect the power for secure wireless path

**WIFI LR-CPE300P-KIT**

Long range outdoor wireless bridge with maximum transmission range of 1km. Supports POE solutions and plugpack included

**EEPROM BD-U**

Memory stick with the ability to store complete alarm programming & re-download into other installs

**USB D-LINK**

USB direct connect cable which comes with software for programming EliteControl Systems via your PC (PC only)

**RS232-BD**

Converts ESL-2 commands into universal RS232 protocol. Use this board to integrate the ESL-2 into your lighting control system

**TRX TRANSCEIVER-PCB**

Hardwire to an ESL-2 control panel & this board will allow all 2-Way wireless products to control & be controlled by the panel

**TRX RM-KIT**

2-way wireless transceiver & remotes. Kit includes 2x 4 button TRX PENDANT & 1x TRX TRANSCEIVER-PCB

**TRX OUTPUT**

2-Way wireless relay output (battery powered). This unit takes commands from the ESL-2 to operate 2 doors &/or gates via key code, zone inputs, time zone of hand held transmitter

**ESL OUTPUT**

4 x Relay Output Module for ESL-2 System providing up to 8 programmable outputs for garage doors, lighting, gates & more

**NANO-O1**

Mini single output expander that wires directly onto keypad bus of ESL-2 ONLY

**NANO-OPT-RXC-ST**

OPT-RXC-ST with mini zone expander that wires directly onto the keypad bus (for ESL-2 & ESX)

**NANO-Z1**

Mini zone expander that wires directly onto keypad bus of ESL-2 & ESX

**CONTROL 4 INTERFACE**

Interface card & drivers for ESL-2 to Control 4

**EC-A2**

Dual Wiegand Interface for ESL-2, ESX systems. 12VDC required, featuring 2 inputs & 2 outputs. Optional 1.4A plug in PSU available (EC-PSU)

**WIEGAND-MINI**

Wiegand Interface for ESL-2, ESX systems. 12VDC required, featuring 1 input & 1 output. Compatible with ESL-2 system

**ESL-2 4G POD**

Plug on 4G-IP Module for ESL-2 System. Primary cellular or cellular back up function. Compatible networks: 2 Degrees, Vodafone or Spark

**4G-IP-MODULE**

4G universal PSTN to DATA communicator for IP monitoring. Connects to ESL-2 & ESX panel (or any panel with CID)

**LUX**

12/24V AC/DC adjustable light level control board for LDR, with built in timer option. Dimensions L86mm x W71mm D25mm

**LDR SENSOR IP65**

LDR sensor in an IP65 box which works in conjunction with the LUX. Note can be used for external use. Dimensions L65mm x W60mm x D40mm

**EC-TAMPER M**

Tamper for EC Metal Cabinet Flush and Surface versions (EC-CAB MET F & EC-CAB MET S)

**EC-CAB MET S**

EC Surface Metal Cabinet Only (no transformer). Dimensions (lid) 388mm x 283mm x D99mm

**EC-CAB MET F**

EC Flush Metal Cabinet Only (no transformer). Dimensions (lid) 410mm x 307mm x D99mm

**SCC-20**

20" structured cabling cabinet (flush mount). Dimensions 355 x 575 x 90mm. Can be used with EC-SCC plates & expander modules

**SCC-28**

28" structured cabling cabinet (flush mount). Dimensions 725 x 355 x 90mm Can be used with EC-SCC plates & expander modules

**EC-MET LOCK**

Lock & Key for the EC-CAB MET (includes 2 x keys)

**EC-SCC ADAPTER**

Adapter Mounting Plate for ESL-2, ESX range (requires EC-SCC PLATE)

**EC-SCC BATT**

Battery Holder for Structured Cabling Cabinet (for 5, 7 & 9A batteries)

**EC-SCC PLATE**

Mounting Plate for Structured Cabling Cabinet

**EC-SCC PSU**

24VDC 2.2A Power Module with IEC for Structured Cabling Cabinet



EC-CAB

Plastic cabinet for ESL-2 system. Holds 12V 7.5A battery, supports 1.4A power supply & multiple board locations with clip in tabs. Dimensions L323mm x W293mm x D87mm



EC-CAB 1A

Plastic cabinet for ESL-2 system. Holds 12V 7.5A battery & multiple board locations. Includes 1.4A power supply with clip in tabs. Dimensions L323mm x W293mm x D87mm



EC-TAMPER P

Plastic cabinet tamper, compatible with EC-CAB & EC-CAB-1A



ELITE TRANS

1.4A transformer 17VAC compatible with EC-CAB and comes standard with all ESL-2 KIT's



ELITE TRANS-KIT

1.4A transformer 17VAC with plastic fuse terminal block & screws. Compatible with ESL-2 PLAS & EC-CAB



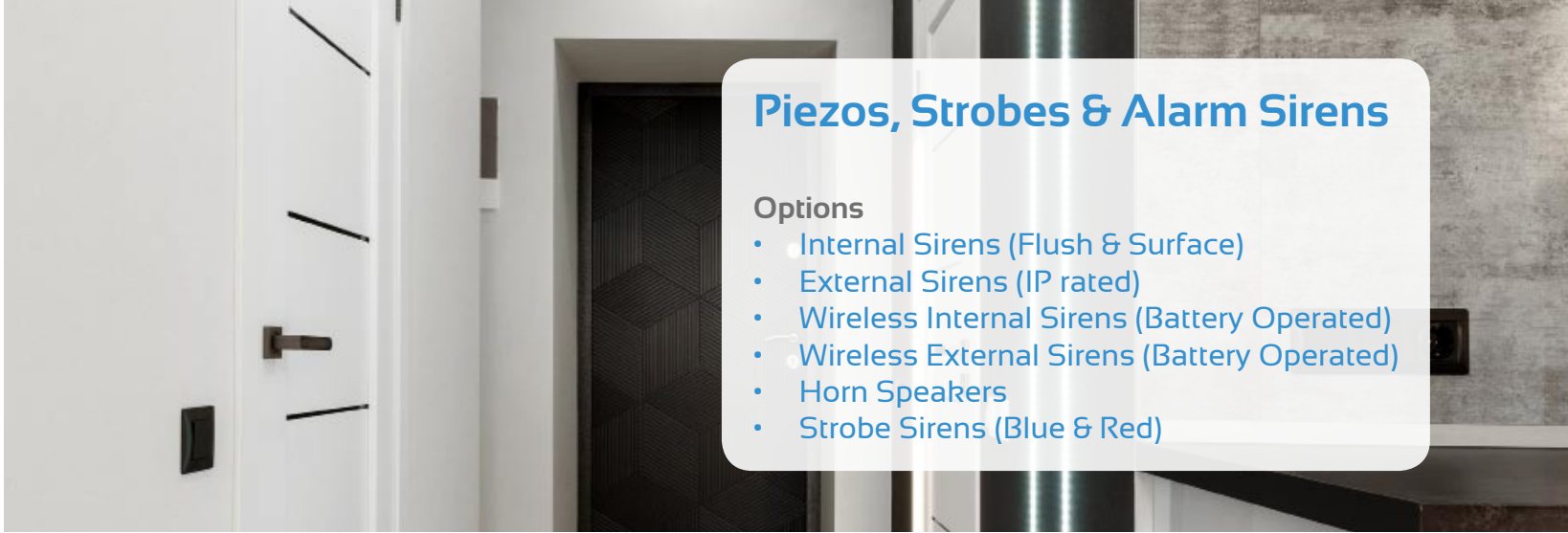
ELITE TRANS-KIT M

1.4A transformer 17VAC compatible with EC-CAB MET series. Includes terminal block & screws



WARNING STICKR

Red & white outdoor security warning sticker. Dimensions L158mm x W79mm



Piezos, Strobes & Alarm Sirens

Options

- Internal Sirens (Flush & Surface)
- External Sirens (IP rated)
- Wireless Internal Sirens (Battery Operated)
- Wireless External Sirens (Battery Operated)
- Horn Speakers
- Strobe Sirens (Blue & Red)



EK105

Top hat piezo surface mount (114dB & 120mA @12VDC). Dimensions dia. 86mm x D42mm



EK105-2T

Combo top hat piezo & chime with adjustable volume chime output (114dB & 230mA @ 12VDC). Dimensions dia. 86mm x D42mm



PS209

Surface mount internal piezo (114dB & 150mA @ 12VDC. Dimensions dia. 54mm x D47mm



PS209-R

Flush mount internal piezo (114dB & 200mA @12VDC. Dimensions dia. 76mm x D59mm



PS209-R2T

Combo flush mount piezo & chime with adjustable volume chime output (114dB & 230mA @ 12VDC). Dimensions dia. 75mm x D54mm



PS209-F

Flush mount internal (PDL style) piezo. (114dB & 200mA @ 12VDC. Dimensions L114mm x W70mm x D57mm



PS-SPEAKER-PRO

3" round in-ceiling speaker with protection circuit for ESX. Compatible with outputs 1 & 2 of all EliteControl panels (set to siren driver)

**TRX INTERNAL**

2-Way wireless internal siren. You can have up to 3 years on a single C-size lithium battery. Fully supervised which can provide a door chime from wireless call point or full alarm tones at 104dB

**KS50**

Outdoor high speed siren (120dB A weighted & 1.2A @ 12V)

**SPL-50**

12V red LED strobe siren 80dB. Diameter of 70mm

**SPL-50B**

12V blue LED strobe siren 80dB. Diameter of 70mm

**LED LIGHT-F WHITE**

Flashing white LED board. 12 - 16VDC 150mA (max). Dimensions L47mm x W42mm x D2mm

**LED LIGHT-L**

High & bright 24 white LED board. 12 - 16VDC 150mA (max). Dimensions L47mm x W42mm x D2mm

**LED LIGHT WHITE**

White LED board. 10 - 15VDC 80mA (max). Dimensions L47mm x W42mm x D2mm

**EC-SIREN**

White External siren / strobe 10-15 VDC 250MA Max. Compatible with the ESL-2 & ESX range

**EC-SIREN B**

Charcoal External siren / strobe 10-15 VDC 250MA Max. Compatible with the ESL-2 & ESX range

**TRX EXTERNAL**

2-Way wireless external siren strobe unit. Runs up to 3 Years on a single C-Size Lithium battery. Compatible with TRX TRANSCIEVER-PCB. Fully supervised, 104dB

**SS-101NZ**

High power siren with battery backup & flash light battery included. 13.6 - 14.4VDC constant supply voltage 250mA (max) @ 128dB. Dimensions 280mm x 195mm x 95mm

**MEB/12**

8 - 16V surface mount buzzer. Used in the RX-CHIME door minder system. Dimensions dia. 12mm x D7mm

**2S3120L**

9 - 15V surface mount piezo siren (leadless). Dimensions dia. 28mm x D10mm



Indoor & Outdoor Detection Devices

Options

- Internal Detectors
- External Detectors
- Ceiling mount 360° Detectors
- Pet Friendly
- Microwave
- Point to Point Photocells
- Domestic & Commercial Detectors

Detection



OPT-RXC-ST

Pet Friendly Passive Infrared Detector with Digital Quad Zone Logic



OPT-RXC-DT-X5

Combination PIR & Microwave Detector 10.525GHZ



OPT-VIBRO

Intelligent Microprocessor Controlled Shock Sensor



OPT-FMX-DT-X5

Combination PIR & Microwave Detector 10.525GHZ for Residential & Commercial Installations



OPT-FX-360

Cost Effective 360° Ceiling Mount Passive Infrared Detector



OPT-QXI-ST

Wide Angle Passive Infrared Outdoor Detector with Selectable Mounting Height & Pattern



OPT-QXI-DT-X5

Combination PIR & Microwave Wide Angle Passive Infrared Outdoor Detector 10.525GHz



OPT-LX-402

Outdoor Passive Infrared Detector IP54



OPT-CX-702

Passive Infrared Indoor Detector for Harsh Environments



OPT-SX-360Z

360° Ceiling Mount Passive Infrared Detector 18m Diameter Coverage



OPT-AX-200TN

Short range Photoelectric Twin Beam 60m, IP65



OPT-VX1-ST

Outdoor PIR with Spot & Area Detection and Double Conductive Shielding IP55



OPT-BXS-ST

Outdoor Boundary Detector with Quad PIR Sensors 2 on each side (up to 40ft Detection per side) IP55



OPT-WX1-ST

180° Panoramic Outdoor Detector IP55



OPT-VX1-DAM-X5

Outdoor PIR & Microwave 10.525GHZ Detector with Anti-Masking IP55



OPT-HX-40DAM

High Mount Dual PIR & Microwave Detector 10.525GHZ for Exterior Use IP55

Detection

**OPT-SL-650QN**

Outdoor 200m Photoelectric Detector IP65, includes Quad Beam with Aspherical Lenses

**OPT-RXC-BKT**

Mounting bracket for RXC detectors. Includes 90° swivel ball bracket

**OPT-CA-2C**

Multi Angle Ceiling mount bracket for CX-702 series

**OPT-CA-1W**

Multi Angle Wall mount bracket for CX-702 series

**SWAN QUAD**

Quad element pet friendly PIR, rated up to 25kg. Optimum mounting height 2.1m. Wide angle lens, detection range 18m & mounting bracket available

**SWAN QUAD N/O**

Quad element pet friendly PIR with normally open contacts. Ideal for use with car alarms

**PDM-II2**

Siemens mirror optic 40kg pet PIR. Optimum mounting height 2.2m. Detection range 12m. Note: must purchase PO-CL to make pet friendly

**QUIP-1000S**

Microwave pet friendly PIR, rated up to 25kg. 9.9GHz with optimum mounting height of 2.1m

**QUIP-1000**

Microwave pet friendly PIR, rated up to 25kg. 10.525GHz with optimum mounting height of 2.1m

**SWAN BKT**

Wall mount bracket for the SWAN QUAD, offers a 90 degree swivel for the PIR

**SWAN PGB**

Pet friendly PIR, rated up to 25kg with built in shock & glass break detector. Optimum mounting height of 2.1m

**CRTL360**

Ceiling mounted 360 degree PIR. Max installation height 3.6m & max coverage dia. 20m. Dimensions dia. 110mm x D40mm

**SRX360 X**

Dual tech 360 degree microwave PIR detector. Max installation height up to 3.6m and 20m dia. coverage when at 3.6m. Dimensions dia. 130mm x D45mm

**CRDDOO**

Double & dual outdoor PIR. 15m (max) coverage, optimum mounting height of 2.1m

**B-PUPILLA.T**

12-24V AC/DC surface mount point to point beam, with 20-25m range. Dimensions L113mm x W35mm x D30mm. IP44 rated

**B-PUPILLA XP20D**

24V AC/DC surface mount point to point beam, battery powered on one side

**A-PROBE KIT**

AAP ground probe kit for vehicle detection. Kit includes 1x A-PROBE with 25m pre-made IP rated cable & 1x A-CONTROLLER

**JN-DCA-20**

Solar powered point to point 20m infrared photobeam (wireless 433Mhz). Often used with JN-CHIME for gate entry alert. Transmits up to 500m clear-line of sight

**A-PROBE**

AAP ground probe for vehicle detection. Requires A-CONTROLLER. Dimensions dia. 34mm x L440mm

**JN-DCA-60**

Solar powered point to point 60m infrared photobeam (wireless 433Mhz). Often used with JN-CHIME for gate entry alert. Transmits up to 500m clear-line of sight

**A-CONTROLLER**

Dual Channel Ground Probe Controller 12-24VAC/DC

**JN-DCA-200**

Solar powered point to point 200m infrared photobeam (wireless 433Mhz). Often used with JN-CHIME for gate entry alert. Transmits up to 500m clear-line of sight

**CRGBDII**

Glass break, vibration sensor. 9-16VDC with a detection range of 10m. Integrates with ESL-2 KIT's

**JN-PO1**

Solar boost power source for JN-DCA series of beams

**GM730**

Siemens seismic detector, perfect for mounting on safes. Dimensions L89mm x W89mm x D23mm

**MD2010**

Loop metal detector 12 - 24VDC or 16 - 24V AC. Delivers precise vehicle detection when accompanied with an in ground loop. No remote or keypad required

**GMXPO**

Mounting plate for GM730. Dimensions L91mm x W91mm x D5mm



Wireless Detectors

Reed Switches

- Features & Options
- Low Voltage Contacts (No Mains)
 - Surface Mount Options
 - Flush Mount Options
 - Premium Rhodium Contacts
 - Commercial & Residential Options
 - Garage Door & Window Contacts

Detection



DFW-433

Pet friendly up to 25kg, supervised 433Mhz wireless PIR (freewave protocol). Compatible with ESL-2 system & RX-16 MF4



DFW-915

Pet friendly up to 25kg, supervised 915Mhz wireless PIR (freewave protocol). Compatible with ESL-2 system & RX-16 MF9



HM-FW-433

Wireless 433Mhz smoke detector (freewave protocol). Compatible with the ESL-2 system & RX-16 MF4



HM-FW-915

Wireless 915Mhz smoke detector (freewave protocol). Compatible with the ESL-2 system & RX-16 MF9



132WH

Surface reed switch SW-SPDT (white). 130VDC 50mA max with a 19mm gap, self adhesive or screw



142SP

Flush reed switch SW-SPDT (white). 130VDC 50mA with a 12mm gap. Used for residential doors & windows



SP200

Flush door contact with NC contacts. 130VDC 50mA with 19.05mm gap. Used for industrial garage doors



39RSP-BR

Surface reed switch with NC contacts. 130VDC 50mA with a 25mm gap. Used for commercial doors & windows



41SP-WH

Surface reed switch with SPDT (white). 130VDC 50mA with a 30mm gap. Used for commercial doors



90SP

Mini surface reed switch with NC contacts. 130VDC 50mA with a 15mm gap. Used for residential purposes

Reed Switches



BP-30

Surface reed switch with NC contacts. 130V/DC 50mA with a 19mm gap, self adhesive or screw. Used for residential doors & windows



BP-50

Flush reed switch with NC contacts. 130V/DC 50mA with a 12mm gap. Used for residential doors & windows



400SP

Surface reed switch with NC contacts. 130V/DC 50mA with a 50mm gap. Used for commercial doors



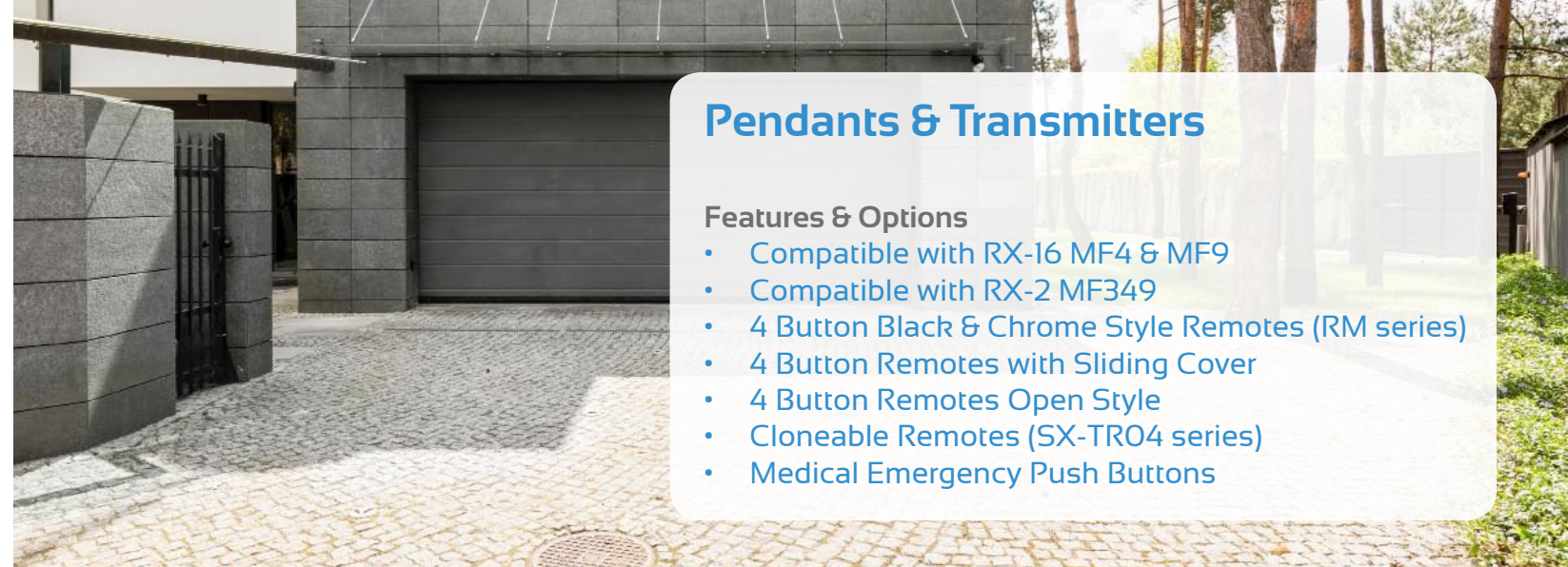
SP-3000A

Surface reed switch with wide 2.25 inch gap. Comes with adjustable magnet, ideal for garage doors



500SP

Surface reed switch with NC contacts. 2.5 inch gap & metal enclosure. Used for industrial garage doors



Pendants & Transmitters

Features & Options

- Compatible with RX-16 MF4 & MF9
- Compatible with RX-2 MF349
- 4 Button Black & Chrome Style Remotes (RM series)
- 4 Button Remotes with Sliding Cover
- 4 Button Remotes Open Style
- Cloneable Remotes (SX-TRO4 series)
- Medical Emergency Push Buttons



TRX PENDANT

Hand held 4 button 2-Way wireless transmitter for Arming, Disarming & Output control. Contains 1x CR2032 battery



RM-0001A

Black & chrome 4 button remote 433Mhz (no cover). Includes 1x A27 battery. Compatible with RX-2 MF349 & RX-16 MF4



RM-8003B

Black & chrome 4 button remote 915Mhz (no cover). Includes 3x CR2016 batteries. Compatible with RX-2 MF349 & RX-16 MF9



RM-8006B

Black & chrome 4 button remote 915Mhz (with cover). Includes 3x CR2016 batteries. Compatible with RX-2 MF349 & RX-16 MF9



SX-TRO4/433

4 button 433Mhz blue remote (can be coded alike). Includes 1x A27 battery. Compatible with RX-2 MF349 & RX-16 MF4



MEDI TX-915-SN

Waterproof medical transmitter in 915Mhz. Comes as a kit with either neck cord or wall bracket (to screw to wall, SN protocol). Compatible with RX-2 MF349 & RX-16 MF9



TX-1/433

Waterproof IP65 single button 433Mhz transmitter in box with battery. Compatible with RX-2 MF349 & RX-16 MF4



TX-1/916.5

Waterproof IP65 single button 916.5Mhz transmitter in box with battery. Compatible with RX-2 MF349 & RX-16 MF9



TX-OCTA

8 channel 915Mhz fixed transmitter in a box. Works with the RX-OCTA receiver. Dimensions L118mm x W78mm x D31mm



Radio Receivers & Decoders

Features & Options

- Multi Frequency Receivers
- Standalone Receivers
- Receivers Compatible with the ESL-2 Panel
- Standalone Internal Receiver with Piezo Sounder
- ABS Receiver Box Available for RX Receiver's
- Works with the RM & SX Remotes



RX-2 MF349

2 channel standalone multi frequency receiver (303, 433 & 915Mhz). 12-24V AC/DC. Dimensions L101mm x W65mm x D18mm



RX-16 MF4

Bus controlled 433Mhz receiver. Works with the ESL-2 control panel. Dimensions L101mm x W65mm x D18mm)



RX-16 MF9

Bus controlled 915Mhz receiver. Works with the ESL-2 control panel. Dimensions L101mm x W65mm x D18mm)



TRX TRANSCEIVER-PCB

Hardwire to an ESL-2 control panel & this board will allow all 2-Way wireless products to control & be controlled by the panel. Compatible with ESL-2 only



JN-CHIME

Standalone chime for JN-DCA beams. Includes 6 functions, relay & 12V DC 2A plugpack (PSI2200OPP)



ABS BOX

Receiver box compatible with RX-2 & RX-16 MF4 & MF9 receiver boards

Esema Wireless Range

Features & Options

- Single Channel Transmitters & Receivers
- Multi Frequency Transmitters & Receivers
- 433Mhz & 915Mhz Available
- Handheld & Fixed Options
- Battery Operated & Hardwired Options
- Long Distance Transmission



GLR43301

1 channel 433Mhz receiver, compatible with the GLT series 12 - 24V



GLR43301240

1 channel mains 433Mhz receiver, compatible with the GLT series



GLR43302

2 channel 433Mhz receiver, compatible with the GLT series 12 - 24V



GLR43303

3 channel 433Mhz receiver, compatible with the GLT series 12 - 24V



GLR43304

4 channel 433Mhz receiver, compatible with the GLT series 12 - 24V



GLR43308 12R

8 channel 433Mhz receiver, compatible with the GLT series 12 - 24V. Includes relay outputs



ANT433M

433Mhz antenna for Gigalink series transmitters & receivers. 94cm long with cable & SMA connector



ANT433S

433Mhz antenna for Gigalink series transmitters & receivers. 35cm long with cable & SMA connector

Esema



GLT43301

1 channel 433Mhz handheld transmitter. Includes 9V alkaline battery



GLT43302

2 channel 433Mhz handheld transmitter. Includes 9V alkaline battery



GLT43303

3 channel 433Mhz handheld transmitter. Includes 9V alkaline battery



GLT43304

4 channel 433Mhz handheld transmitter. Includes 9V alkaline battery



GLT43308

8 channel 433Mhz handheld transmitter. Includes 9V alkaline battery



GLT4330112E

1 channel fixed transmitter, compatible with the GLR series. Must have ANT433 antenna



GLT4330812E

8 channel fixed transmitter, compatible with the GLR series. Must have ANT433 antenna

Esema



MCT91512

12 channel multicode 915Mhz transmitter, compatible with the MCR series (no case)



MCR91512R

12 channel 915Mhz receiver, compatible with MCT range & includes relay output. 10 - 28V AC/DC



MCT91516

16 channel 915Mhz multicode transmitter, compatible with the MCR series



MCR91516R

16 channel 915Mhz receiver with relay outputs. SMA 10 - 28V AC/DC, compatible with the MCT range



FOB43301

1 channel keyring PentaFOB transmitter with 5 frequencies, compatible with the PCR range



FOB43302

2 channel keyring PentaFOB transmitter with 5 frequencies, compatible with the PCR range



FOB43304

4 channel keyring PentaFOB transmitter with 5 frequencies, compatible with the PCR range



FOB43305

5 channel keyring PentaFOB transmitter with 5 frequencies, compatible with the PCR range



PCR43301RE

1 channel Penta receiver with relay output and 5 frequencies, compatible with the FOB series



PCR43304R

4 channel Penta receiver with relay output and 5 frequencies, compatible with the FOB series



PCR43305R

5 channel Penta receiver with relay output and 5 frequencies, compatible with the FOB series



EliteControl Monitoring

Features & Options

- Universal 4G Monitoring Unit
- GSM Gate Openers
- App Control Through Your Smartphone
- Monitoring Over The Internet
- Universal App Control On Any Alarm
- Monitor Your Alarm With Your Smartphone

Monitoring



ESL-2 4G POD

Plug on 4G-IP Module for ESL-2 System. Primary cellular or cellular back up function. Compatible networks: 2 Degrees, Vodafone or Spark



4G-IP-MODULE

4G universal PSTN to DATA communicator for IP monitoring. Will send either an email or text message to your phone



IP-MODULE

Universal LAN to PSTN reporting module for monitoring over internet. Can be put on any alarm panel. Pre-configured for App control



IP-LOOM

Allows remote ULD software programming of ELITE S series. Requires the IP-MODULE & setup involves advanced IT knowledge



ANT-MB-49A

500mm 7 band 7dBi whip antenna with magnetic base. 3m cable SMA 824-960/1710-1990/2170Mhz



ANT-R34S

45mm antenna with SMA male swivel connector, compatible with both GSM & 4G modules



ESL-2 APP POD

Plug on App/IP-Module for ESL-2 System. Requires ELITE CONTROL app (\$15.00) on your smartphone



ELITE CONTROL

Available from the app Store or Google Play (requires IP-MODULE or ESL-2 APP POD)



ESL-2 DIAL POD

Plug on Dialler for ESL-2 System for land-line & third party monitoring

Monitoring

Consider adding the **ESL-2 APP POD** to your system

EliteControl Functions



Arm/Disarm



Stay in Arm/Disarm



Glass Break Sensor



Window Sensor



Indoor Sensor



Outdoor Sensor



Door Sensor



Garage Door Sensor



Smoke Detector



Heat Sensor

Plug in network module for ESL-2 security & control systems

- Plug & Play
- Pre Programmed
- App or IP Monitoring
- Push Notification Alerts
- Apple or Android Compatible



Access Control



Intelligent & Secure Control



Section Includes

Access Keypads

Touch & Emergency Egress

Dual Interface for ESL-2 & ESX

Standalone Interface Control



Access Control

Features & Options

- 2 Door Access Control Systems
- Standalone 2 Door Control
- Integrated Access Control with the ESL-2 panel
- IP Rated Stainless Steel Keypads
- IR Rated Reader Only Keypads
- Built In Proximity Reader Keypads
- Prox Card & Prox Keytag Options Available



PW KEYPAD-XK1

Standalone stainless steel outdoor keypad (IP65). 12 -24V with built in prox reader. Dimensions 115mm x 75mm x 22mm



PW KEYPAD-XK4

Standalone stainless steel outdoor keypad (IP65). 12 -24V with built in prox reader. Dimensions 134mm x 56mm x 21mm



EC-A2

Dual wiegand interface for ESL-2 & ESX systems. 12VDC required, includes 2 inputs & 2 outputs with optional 1.4A PSU (EC-PSU)



PW WIEGAND

Outdoor keypad reader with built in prox/pin (IP66). 40 bit wiegand white backlit keypad, compatible with the EC-A2



PW WIEGAND KIT

2 door access control kit, includes 1x PW WIEGAND & 1x EC-A2 interface board. Compatible with ESL-2 series



PW WIEGAND-SK1

40 bit wiegand 8-18VDC keypad. IP65 with blue backlit keys & built in prox reader. Used with EC-A2



WIEGAND-MINI

Wiegand Interface for ESL-2 & ESX systems. 12VDC required, featuring 1 input & 1 output. Compatible with ESL-2 system



CPT-10T-W KIT

2 door access control kit, includes 1x PW WIEGAND-SK1 & EC-A2 interface board. Compatible with ESL-2 series



PW WIEGAND-SK4

40 bit wiegand 8-18VDC keypad (architrave style). IP65 with blue backlit keys & built in prox reader. Used with EC-A2



CPT-12DT-W KIT

2 door access control kit, includes 1x PW WIEGAND-SK4 & 1x EC-A2 interface board. Compatible with ESL-2 series



PW WIEGAND-NIK

40 bit outdoor wiegand reader with built in prox. IP66 outdoor ready and compatible with EC-A2



AC2-W

2 door standalone access controller (12VDC only). 500 user code slots & 500 prox tag slots. Compatible with the PW-KEYPAD range



AC2-W KIT 10T-W

Standalone access control kit, includes 1x AC2-W & 1x PW WIEGAND-SK1



AC2-W KIT 12DT-W

Standalone access control kit, includes 1x AC2-W & 1x PW WIEGAND-SK4



AC2-W KIT

Standalone access control kit, includes 1x AC2-W & 1x PW WIEGAND



DWD30

Cable protector with plastic ends (stainless steel). 6.2 dia. 300mm length



DWM300

Cable protector with metal box ends (stainless steel). 8mm dia. 300mm length



PROX CARD

Proximity card compatible with the PW & CPT series keypads. Dimensions L86mm x W54mm x 1mm



PROX EM4100

Proximity tumbler keytag (blue). Compatible with PW & CPT series keypads



PRESCO TAGS

Presco proximity keytag (grey). Compatible with PW & CPT series keypads



EM4102

20mm proximity tag (clear disc). Compatible with PW & CPT series keypads & can be fitted in the RM remotes



AT2-PCB

Universal timer board 5V -30V DC with 9 selectable time modes. Dimensions 63 x 37 x 20mm

**AAP-TOUCH**

Multi function capacitive exit button for egress in access control applications. 10-28VDC 50mA current draw

**AAP-EM**

Multi function mechanical exit button for emergency egress in access control applications.. 10-28VDC 50mA current draw

**AAP-COVER**

Protective cover for the AAP-EM

**AAP-PANIC**

Latching panic plate, with DPDT 2A contacts, buzzer and back light. 10-28VDC 50mA current draw

**WES 1910**

Small stainless steel press to exit push button. Flush IP65, includes WEB1910 push button & WEBS19 face plate

**WEL 1911**

PDL stainless steel blue illuminated exit push button. Flush IP65, includes WEB1911 push button & WEBL19 face plate

**WEL2220**

Stainless steel exit push button with mushroom green push button. NO/NC contacts

**WEL-SMB**

Outdoor surface mount exit button with LED indicator. Dimensions H60mm x W30mm x D26mm

Mag Locks, Strikes & Door Holders

Features & Options

- Cobalt Locks & V-Locks
- Dropbolts
- Mag Locks both Indoor & Outdoor Rated
- Brackets to match, both L & ZL Options
- Door Holders for Access Control
- Reliable Access Control Locks
- Your Full Range of Access Control Options

**FSHFEL990M**

12/24V mortice lock - Fail safe/Fail secure 60mm back-set

**FSHR40PCV-12**

12V magnetic door holder 25kg - floor mounted

**FSHR40PCV-24**

24V magnetic door holder 25kg - floor mounted

**GK310-1224**

12/24VDC Electric Strike - Changeover Fail Safe/Fail Secure

**FSHR40-12ARM**

Armature plate only for FSH door holders

**FSHR40-12**

12V 25Kg door holder - Wall mount

**FSHR40-24**

24V 25Kg door holder - Wall mount

**FSHR40PCH-12**

12V 25Kg door holder - wall mount with extension

**YM-180W**

180Kg 12/24VDC weather resistant magnetic clamp for pedestrian gates

**FSHFEM3500M**

280Kg single magnetic lock - monitored

**FSHFEM4700FS-LSS**

380Kg single magnetic lock - weather resistant - monitored

**FSHFEM3500DM**

560Kg double magnetic lock - monitored

**FSHFEM5000G**

630Kg single magnetic lock - weather resistant

**FSHFEM5700M**

580Kg single magnetic lock - monitored

**FSHFEM5700DM**

500Kg double magnetic lock - monitored

**YM-280DS**

280Kg 12/24VDC single door magnetic clamp

**ABK-280ZL**

ZLC bracket for inward doors use with YM-280DS

**FSHFEM3500FM**

280Kg single flush mount magnetic lock

**FSHFES10**

12/24V electric strike lock - weather resistant - ANSI IP56

**FSHFES20**

12/24V electric strike lock - high security for commercial premises

**ABK-180ZL**

Weather resistant ZL bracket, compatible with the YM-180W

**FSHAMGB4-12**

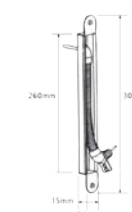
Glass door bracket for FEM3500M - 12mm glass

**FSHAMZB4-LP**

ZL bracket for single mag lock, suits: FEM3500,3500M,4700FS

**FSHAMZB1-LPDSS**

ZL bracket for single mag lock suit: FEM5700M

**FSHIRT88ISSS**

Recessed cable transfer for mortice locks 300mm

Intercoms



Always Connected

Section Includes

IP Intercoms

Video & Audio Intercoms

Apartment Intercoms

Multiple Mounting Options



DoorBird
Technology meets Design.

COMPETITION

Intercoms

Features & Options

- Residential Intercom Systems
- Apartment Intercom Systems
- Monitors with Photo Capture Function
- Gate Stations with Integrated Keypads
- Stainless Steel IP Rated Gate Stations
- Your choice of External Gate Station & Internal Monitor



CPT-MON-3

Silver 3.5 inch LCD monitor. Compatible with the CPT-GATE series. Dimensions L190mm x W122mm x D28mm



CPT-MON-8B

Black 7 inch LCD touch panel LCC monitor. Features memory module that stores images of all visitors. Also has built in pager function. Dimensions L208mm x W150mm x D18mm



CPT-MON-8W

White 7 inch LCD touch panel LCC monitor. Features memory module that stores images of all visitors. Also has built in pager function. Dimensions L240mm x W160mm x D18mm



CPT-GATE-A

Silver video & audio gate station with back lit access control keypad. Capable of holding upto 40 users. Compatible with the CPT-MON range. Dimensions L180mm x W76mm x D60mm



CPT-GATE-B

Video & audio gate station compatible with the CPT-MON range. Dimensions L130mm x W55mm x D40mm



CPT-GATE B SHROUD

Surface mount shroud for CPT-GATE-B. Dimensions L120mm x W55mm x D38mm



CPT-GATE-E

Silver video & audio gate station with back lit access control keypad (flush mount). Compatible with the CPT-MON range. Dimensions L195mm x W100mm x D5mm



CPT-GATE E SHROUD

Surface mount shroud for CPT-GATE-E. Dimensions L202mm x W108mm x D54mm

Intercoms

**CPT-GATE F KP (3)**

3 apartment flush mount call station with access keypad & up to 40 users. Brushed stainless steel & blue back lit keys. Works with the CPT-MON series. Dimensions L280mm x W100mm x D55mm

**CPT-GATE F (4)**

4 apartment flush mount call station, expandable with CPT-GATE F (6) & (9) series. Brushed stainless steel & blue back lit keys. Works with the CPT-MON series. Dimensions L280mm x W100mm x D55mm

**CPT-GATE F (6)**

6 apartment flush mount call station, expandable with CPT-GATE F (4) & (9) series. Brushed stainless steel & blue back lit keys. Works with the CPT-MON series. Dimensions L280mm x W100mm x D55mm

**CPT-GATE F (9)**

9 apartment flush mount call station, requires CPT-GATE F KP (3). Brushed stainless steel & blue back lit keys. Works with the CPT-MON series. Dimensions L280mm x W100mm x D55mm

**CPT-GATE F SHROUD**

Surface mount shroud for CPT-GATE-F. Dimensions L290mm x W110mm x D50mm

**CPT-GATE C SHROUD**

Surface mount shroud for CPT-GATE-C. Dimensions L130mm x W98mm x D45mm

**CPT KIT A8-B**

Video & audio intercom kit. Capable of 4x monitors & 2x gate stations (max). Includes CPT-MON-8B, CPT-GATE-A & WELL-LPV-20-15

**CPT KIT A8-W**

Video & audio intercom kit. Capable of 4x monitors & 2x gate stations (max). Includes CPT-MON-8W, CPT-GATE-A & WELL-LPV-20-15

**CPT KIT B3**

Video & audio intercom kit. Capable of 4x monitors & 2x gate stations (max). Includes CPT-MON-3, CPT-GATE-B & WELL-LPV-20-15

**CPT KIT B8-B**

Video & audio intercom kit. Capable of 4x monitors & 2x gate stations (max). Includes CPT-MON-8B, CPT-GATE-B & WELL-LPV-20-15

**CPT KIT B8-W**

Video & audio intercom kit. Capable of 4x monitors & 2x gate stations (max). Includes CPT-MON-8W, CPT-GATE-B & WELL-LPV-20-15

**CPT KIT E8-B**

Video & audio intercom kit. Capable of 4x monitors & 2x gate stations (max). Includes CPT-MON-8B, CPT-GATE-E & WELL-LPV-20-15

**CPT KIT E8-W**

Video & audio intercom kit. Capable of 4x monitors & 2x gate stations (max). Includes CPT-MON-8W, CPT-GATE-E & WELL-LPV-20-15

**DB-D101**

IP video door station with smartphone push and wifi/Ethernet. White edition

**DB-D101S**

IP video door station with smartphone push and wifi/Ethernet, Stainless steel edition

**DB-D2101KV**

IP video door station with smartphone push. Stainless steel flush edition with integrated access keypad

**DB-D2101KV HOUSE V4**

Surface mount housing box for DB-D2101KV & DB-D2101KV V4 IP Intercom (Salt Water Version)

**DB-D2101KV V4**

IP video door station with smartphone push. Stainless steel flush edition with integrated access keypad (Salt Water Version)

**DB-A1101**

Indoor IP video station comes standard as surface mount. Use DB-A8003 for table stand

**DB-A8003**

Optional table stand for IP Video Indoor Station DB-A1101

**DB-D1101V-Flush**

Mini IP intercom video door station, surface mount stainless steel metallic finish. Single push button

**DB-D2101V**

IP video door station. Flush Stainless Steel Brushed V2A. Includes 1x call button

**DB-D21DKH**

IP video door station, brushed stainless steel, flush mounted (Horizontal), display module, keypad module. Enquire for stock availability

**DB-D21DKV**

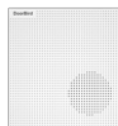
IP video door station, brushed stainless steel, flush mounted (Vertical), display module, keypad module. Enquire for stock availability

**DB-D2101WV**

IP video door station with 1 call button. The unit also has an integrated "Touch-free" module to remove the need to touch the door station. Perfect for high public traffic areas

**DB-A1071**

2-Wire Ethernet POE Converter compatible with DoorBird intercoms

**DB-A1061W**

IP internal door chime compatible with DoorBird IP intercoms. White edition. Note: lead time may apply

**CPT-PILLAR**

Keypad/intercom goose neck plinth, polished stainless steel. Dimensions L1600mm x dia. 50mm. Mounting plate L110mm x W55mm

**WELL-LPV-20-15**

15V 1.3A switch mode power supply in IP67 case. 100 - 240VAC input. Dimensions L116mm x W34mm D27mm

Gate Automation

Complete Automation



Section Includes

Swing Gate Actuators

Sliding Gate Actuators

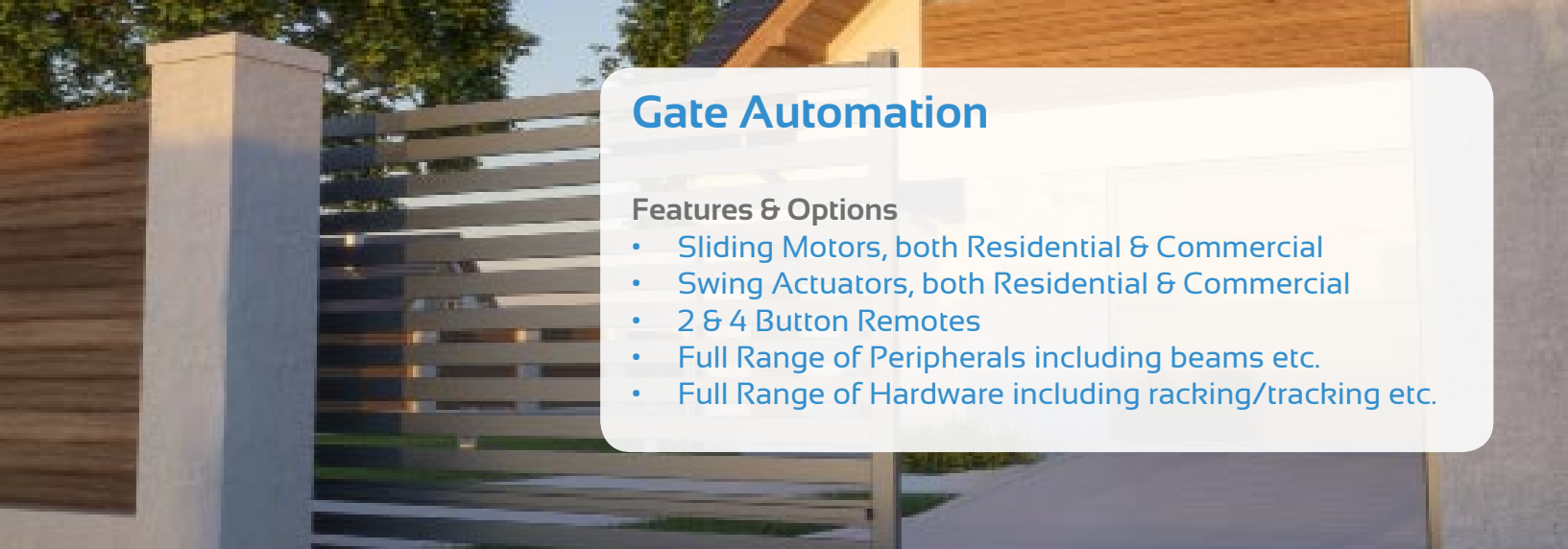
Residential Actuators

Commercial Actuators

Full Range of Accessories



BENINCA[®]
TECHNOLOGY TO OPEN



Gate Automation

Features & Options

- Sliding Motors, both Residential & Commercial
- Swing Actuators, both Residential & Commercial
- 2 & 4 Button Remotes
- Full Range of Peripherals including beams etc.
- Full Range of Hardware including racking/tracking etc.

Gates



B-BULLTURBO-KIT

Kit includes 24V B-BULL624 TURBO sliding gate motor & controller, 2x B-TO.GO2VA & 4x B-197.1 nylon racking



B-BOB3024E.P

Kit includes 24V 2x B-BOB3024E screw drive actuators, B-BRAINY24 controller, B-PUPILLA & 2x B-TO.GO2VA remotes



B-BOB3024E

24V screw drive actuator with mechanical stops. Requires B-BRAINY24 and used for gates up to 3m leaf. Intensive use duty cycle, 1800N thrust



B-BSR

Adjustable mounting bracket for linear actuators. Compatible with the B-BOB30 series



B-BOB5024

24V screw drive actuator with mechanical stops. Requires B-BRAINY24 and used for gates up to 5m leaf. Intensive use duty cycle, 2200N thrust



B-BACK UP SWING

Battery Back Up kit for Beninca 24V Swing Automation



B-BSR50

Bolt on bracket for linear actuators. Compatible with the B-BOB50 series



B-HD35AC

230VAC hydraulic actuator with mechanical stops. Requires B-BRAINY230 and used for gates up to 3.5m at 500kg. Intensive use duty cycle, 4200N thrust



B-HD50AC

230VAC hydraulic actuator, used for gates up to 5m leaf. Includes hydraulic stops in open & close. Intensive use duty cycle, 4200N thrust. Requires B-BRAINY230



B-PR45E24

24V hinge arm with built in limit switches. Arm not included, you require B-DUE2 and used for gates up to 4m leaf. Intensive use duty cycle, 320Nm torque



B-DUE2

Galvanised steel hinge arm for articulated arm actuators. Compatible with B-PR45E & B-PR45E24



B-BACK UP SLIDE

Battery Back up kit for Beninca 24V Slide Automation

Gates

**B-BULL624TURBO**

24VDC sliding gate motor for gates up to 600kg & 25m/min. Includes built in limit switches & receiver/controller

**B-BULL1224**

24V sliding gate motor for gates up to 1200kg. Duty cycle 80% with 390N max thrust. 115VAC/ 230VAC power supply. 3A max absorbed current

**B-BISON25 OTI**

230V sliding gate motor for gates up to 2500kg with built in limit switches. Built in controller & receiver with intensive duty cycle

**B-Viro**

12V Strike for swing driveway & pedestrian gates & 35mm lock Cylinder (vertical mount)

**B-Viro-Horizontal**

12V Strike for swing driveway & pedestrian gates & 35mm lock Cylinder (horizontal mount)

**B-BULL.PI**

Raised Mounting Plate for B-BULL20M & BULL1024

**B-MLS**

Magnetic Limit Switch kit for sliding gate actuators

**B-ONE.2WB**

433Mhz 2 channel universal receiver in a box compatible with Beninca remotes (both 2 & 4 button)

**B-197.1**

Nylon racking for Beninca sliding gates. Dimensions L1000mm x W28mm D22mm. Compatible with B-BULL motors

**B-192.1**

Metal racking for Beninca sliding gates. Dimensions L1005mm x W30mm x D12mm. Compatible with B-BULL motors. Spacers sold separately

**B-192.1 Spacer**

Metal spacer to go with the B-192.1 racking. Note you require 3 spacers for 1 x B-192.1

**METAL PIN**

Metal pin anchor for B-192.1 racking. Dimensions 6.5mm x 50mm

**B-RI.M4Z**

Galvanised gear racking for commercial sliders. Dimensions L2000mm x W22mm D22mm. Note requires on-site fabrication

**B-186.3**

3m U-Section 16mm gate tracking for sliding gates. Compatible with 20mm wheels and the B-BULL motors. Note: oversized freight cost may apply

**B-111.80**

80mm U-Section gate wheels (20mm). Compatible with the B-BULL motors

**B-111.100**

100mm U-Section gate wheels (20mm). Compatible with the B-BULL motors

**B-213.3B**

2 roller guide plate (bolt on). Compatible with sliding gate motors

**B-417.20**

Swing gate hinge, adjustable 70mm wide with 20mm thread. Compatible with swing gates

**B-247.2**

Bolt down end stop for Beninca swing & slide gate motors

**B-530.0**

Gate stops to be cemented for swing gates. Compatible with B-BOB & B-BILL swing actuators

**B-535.2**

Gate stop for B-BOB swing gates (bolt on)

**B-BE.CODE**

Wireless keypad for controlling automated systems. Max 254 different codes linking the device to your receiver

**B-DU.FCN**

Waterproof limit switch device for DU.IT24 underground actuator series

**B-SB.DUITL**

Unlocking kit includes unlocking system with hex key & components to connect the motor to the gate. Mechanical stop included

**B-DU.ITIX**

Self supporting stainless steel foundation box, max opening of 110 degrees. Comes only with cover, requires an unlocking accessory

**B-DU.IT24NVE**

24V underground motor for swing gates up to 3.5m. Built in encoder to ensure maximum safety & precision in the gate moving phase

**B-KEY**

Master keys for Beninca motors, key range from 1171 - 1180 (pack of 10)

**B-IRI.LAMP**

Universal LED flashing light. Also comes with blinking function as standard. Includes inbuilt aerial

**B-SC.M72**

Mechanical Safety Edge 2 Metres

**B-BOB.BUSH**

Whole bush for the B-BOB screw drive actuator series

**B-PUPILLA.T**

12-24V AC/DC surface mount point to point beam, with 20-25m range. Dimensions L113mm x W35mm x D30mm. IP44 rated

**B-PUPILLA XP20D**

24V AC/DC surface mount point to point beam with battery on one side of the beam

**B-FTC.S**

24V AC/DC safety beam set. Fits in commercial sliders including B-BISON. Dimensions L90mm x W75mm x D30mm

**B-COL.P**

Pair of columns in anodised aluminium with Base Height 0.5M. Compatible with B-PUPILLA series

**B-CBY.24V**

Battery charger card for CBY.24V, bracket not included. Used for battery charging

**B-BRAINY BOX**

Plastic box only for Brainy controller. Dimensions L285mm x W220mm x D120mm

**B-BRAINY230**

BRAINY230 2 channel controller for 230V actuators & comes with plastic case

**B-BRAINY24**

BRAINY24 control panel with battery charging (batteries not included)



B-BRAINY24 PCB

BRAINY24 control panel for 24V actuators (PCB only)



B-SA-24

27VDC Beninca power supply with battery backup



B-TO.GO4AK

4 channel 433Mhz transmitter which is cloneable. Compatible with Beninca actuators



B-TO.GO2VA

2 channel 433Mhz transmitter with advanced rolling code. Compatible with Beninca actuators



B-TO.GO4VA

4 channel 433Mhz transmitter with advanced rolling code. Compatible with Beninca actuators



B-SIS

Bus module for synchronizing gate controllers



B-SMART

Turn your transmitter into an elegant wall mounted keypad. Can be fixed to the wall and it is compatible with all B-TO.GO remotes



B-TO.CLIP

Plastic clip for B-TO.GO remotes. Suitable for use on your car visor or wall



B-ANT433

433Mhz extension antenna for Beninca controllers. Compatible with B-TO.GO remotes & controllers



B-EVA.7

Road barrier control unit with integrated receiver, for passages up to 7m



B-EVA7.A2

Painted elliptical aluminium arm cut into two 3.5m section

Fire Accessories

Features & Options

- Mini Smoke Detectors
- Hardwired & Wireless Smoke & Heat Detectors
- Emergency Door Releases
- Inter-linked Hardwired Smoke Detectors
- Latching & Auto Resetting Smoke Detectors
- Compatible with the ESL-2 Panel



HM-MINI-12V

12V hardwired mini smoke detector. Compatible with the ESL-2 system. Dimensions H52mm x Dia.48mm



HM-MINI

Standalone battery operated smoke detector. 3V DC (1x CR-123AW battery). Dimensions H52mm x Dia.48mm



HM-SMOKE

12V hardwired smoke detector with test button. Compatible with the ESL-2 system



TRX SMOKE

2-Way wireless photoelectric smoke detector with built in 85dB sounder. Includes 9V alkaline battery & surface mount base



HM-FW-433

Wireless 433Mhz smoke detector (freewave protocol). Compatible with the ESL-2 system



HM-FW-915

Wireless 915Mhz smoke detector (freewave protocol). Compatible with the ESL-2 system



AJ-765

Standalone photoelectric smoke detector with wireless interconnect (433Mhz)

**HM-SMOKE230**

230V hardwired smoke alarm with 9V DC alkaline battery backup. Capable of inter-linking the smokes

**VST-CONTROLLER**

Designed for HM-SMOKE230 wired smoke detectors. Allows multiple detectors to be wired together

**FMR-100**

Flush mount ceiling ring for NB338 & NB323 smoke detectors. Hole cut-out size 110mm

**NB338-4ARB**

12V resetting smoke detector with buzzer & hush button. Compatible with the ESL-2 system

**NB323**

Rate of Rise thermal heat detector. Trigger temperature 57 degrees & compatible with the ESL-2 system

**NB338-4B**

12V smoke detector, latching with buzzer (no hush button). Compatible with the ESL-2 system

**TRX HEAT**

2-way wireless heat detector with built in 85dB sounder & hush button. Trigger temperature 57 degrees

**SM-200**

Aerosol smoke detector test can for HM & NB smokes

Batteries

**DM12-1.3PP**

PowerPac 12V 1.3A battery. Dimensions L100mm x W45mm x D52mm

**DM12-2**

PowerPac 12V 2A battery. Dimensions L170mm x W60mm x D35mm

**DM12-3**

PowerPac 12V 3A battery. Dimensions L133mm x W68mm x D60mm

**DM12-5A/H**

PowerPac 12V 5A battery. Dimensions L90mm x W101mm x D70mm

**DM12-7.5**

PowerPac 12V 7.5A battery. Dimensions L150mm x W65mm x D95mm

**DM12-9**

PowerPac 12V 9A battery. Dimensions L150mm x W65mm x D95mm

**DM12-12**

PowerPac 12V 12A battery. Dimensions L150mm x W100mm x D100mm

**DM12-18PP**

PowerPac 12V 18A battery. Dimensions
L180mm x W75mm x D165mm

**DM12-40**

PowerPac 12V 40A battery. Dimensions
L175mm x W195mm x D165mm

**DM6-5A**

PowerPac 6V 5A battery. Dimensions
L46mm x W70mm x D105mm

**3.6V**

1/2 AA 3.6V lithium battery used for
TRX-REED & other wireless products

**CR-123AW**

3V lithium battery used for TRX PIR,
DFW-433 & DFW-915

**ER26500**

Li-SOCL2 C size lithium battery used
for TRX EXTERNAL, TRX INTERNAL
& TRX OUTPUT

**CR2016**

Coin cell lithium battery 3V used for RM
remotes (2x CR2016)

**CR2032 CELL**

Coin cell lithium battery 3V used for TRX
PENDANT (1x CR2032 CELL)

**CR2450**

Coin cell lithium battery 3V used for TRX
KEYPAD-A (2x CR2450)

**142-004**

A23 12V miniature battery, dimensions L28mm
x Dia. 10mm

**A27**

A27 12V alkaline battery, dimensions L28mm
x Dia. 8mm

**142-006**








9V alkaline battery used for HM-FW wireless
smokes. Dimensions L48mm x W48mm x
D26mm

**BC-12500**

Battery charger for DM PowerPac batteries,
12V & 800mA



Security & CCTV Cable

Cable		4C2-100-CU	4 core 0.2mm tinned copper cable with box centre pull. Comes in 100m roll
		4C5-100-CU	4 core 0.5mm tinned copper cable with box centre pull. Comes in 100m roll
		4C5-300-CU	4 core 0.5mm tinned copper cable with drum centre pull. Comes in 300m roll
		6C2-100-CU	6 core 0.2mm tinned copper cable with box centre pull. Comes in 100m roll
		6C5-100-CU	6 core 0.5mm tinned copper cable with box centre pull. Comes in 100m roll
		6C5-300-CU	6 core 0.5mm tinned copper cable with drum centre pull. Comes in 300m roll
		8C5-300-CU	8 core 0.5mm tinned copper cable with drum centre pull. Comes in 300m roll



RG59-T100

RG59 .81 Coax centre Solid Copper Core/Braid & Twin Power CCA shielding 100m reel



PATCH CABLE-30

30m CAT5E CCA RJ45 to RJ45 Patch cable



CAT6-300-CU

CAT6 UTP copper cable which comes in 300m pull box. PVC jacket white with 6.5mm external jacket & 23AWG, 4 pair with nylon rip cord



RG59T-75

Premade coax & twin CCTV cable. Comes complete with fittings, 23m BNC & DC 2.1mm plug



DC SPLITTER

2.1mm DC socket with 4x 2.1mm DC plug out used for CCTV cameras



BNC CRIMP/M 0.9

BNC crimp plug used with RG59-T100. Centre pin size is 0.9mm



BNC CRIMP/M

BNC crimp plug used with RG6-T100. Centre pin size is 1.10mm & outer sheath 6.9mm



VT-POWER 2.1M

2.1mm DC male plug with DC terminal connector used for CCTV



VT-POWER

2.1mm DC female plug with DC terminal connector used for CCTV



Control Relays & Timers

Relays & Timers



AT2-PCB

Universal timer board 5V -30V DC with 9 selectable time modes. Dimensions 63 x 37 x 20mm



SP RELAY-1A

12V 1A SPDT relay board, dimensions L43mm x W39mm x D18mm



SP RELAY-10A

12V 10A SPDT relay board, dimensions L43mm x W39mm x D25mm



DP RELAY-5A

12V 5A DPDT relay board, dimensions L43mm x W39mm x D25mm



SP RELAY-AC

24V 10A SPDT trigger relay board, dimensions L43mm x W39mm x D25mm



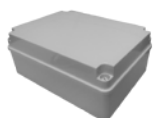
DP RELAY-TRG

12V 5A DPDT trigger input relay board (low current), dimensions L43mm x W39mm x D25mm



Plastic Enclosures

Enclosures



PLAS BOX-POLY

Polycarbonate box enclosure, dimensions L250mm x W175mm x D100mm



ABS BOX

Receiver box compatible with RX-2 & RX-16 receiver boards



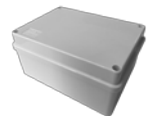
EC-CAB

Plastic cabinet for ESL-2 system. Holds 12V 7.5A battery, supports 1.4A power supply & multiple board locations with clip in tabs. Dimensions L323mm x W293mm x D87mm



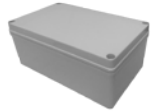
PLAS BOX-S IP56

Plastic box IP56 rated, dimensions L100mm x W100mm x D50mm



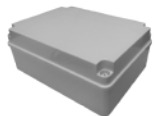
PLAS BOX-L IP65

Plastic box IP65 rated, dimensions L110mm x W150mm x D70mm



PLAS BOX-XL

Plastic box IP56 rated, dimensions L220mm x W150mm x D100mm



PLAS BOX-XXL

Plastic box IP65 rated, dimensions L250mm x W175mm x D103mm

Plugpacks

Power Supplies



PSI2300EP

12V DC 500mA plugpack. Can be used for many applications including powering keypads & transmitters etc



DC CONV-5

Mini AC/DC converter, 16 - 28V in to 12V DC out 500mA. Dimensions L74mm x W40mm D23mm



PSI2200OPP

Switch mode plugpack, 12V DC 2A



B-SA-24

27VDC Beninca power supply with battery backup



PSI24160

Switch mode in-line powerpack 12V DC 4A, used to power CCTV cameras



PSU SM

12VDC 1.6/3Amp Selectable Power Supply Board (15-24V Input)



TEPP16V

Plugpack 16V AC 1.5A, used to power ESL-2 alarm system



PSU1 SM

13.8V 1.5A Plated Power Supply with Monitor Outputs. Dimensions L200mm x W92mm x D60mm

**PSUIB SM**

13.8V 1.5A Boxed Power Supply with Monitor Outputs. Dimensions L323mm x W293mm x D87mm

**WELL-LPV-20-15**

15V 1.3A switch mode power supply in IP67 case with 100 - 240V AC input, ideal for powering CPT monitors. Dimensions L116mm x W34mm x D27mm

**PSU4**

13.8V 4A plated power supply with battery charging & 5 fused outlets

**FUSED BOARD-8**

Safely power 8 low voltage devices from one power feed. 8 x 1.6A fused outlets, features 2.1mm DC plug input

**PS5**

12V 5A plated power supply with battery backup, including mains & battery monitoring. Perfect for 12V camera system

**PSU24/1.5**

27.6V 1.5A plated power supply with battery charging. Dimensions L200mm x W92mm x D60mm

**PS5B**

12V 5A boxed power supply with battery backup, including mains & battery monitoring. Perfect for 12V camera system

**PS24/3**

27.6V 3A plated premium series power supply with battery charging. Includes Mains & battery fail outputs

**WELL-LPH-18-12**

12V 1.5A switch mode power supply in IP67 case with 230V AC input. Dimensions L140mm x W30mm x D23mm

**PS24/3B**

27.6V 3A boxed premium series power supply with battery charging. Includes Mains & battery fail outputs



Drill Bits

Drill Bits



BES-BELL1412

Diameter 6.4mm x L305mm bell hanger bit made from premium M2 grade steel. Cuts through wood, metal, nails & screws



BES-BELL3812

Diameter 9.5mm x L305mm bell hanger bit made from premium M2 grade steel. Cuts through wood, metal, nails & screws



BES-BELL1212

Diameter 12.7mm x L305mm bell hanger bit made from premium M2 grade steel. Cuts through wood, metal, nails & screws



BES-BELL1424

Diameter 6.4mm x L610mm bell hanger bit made from premium M2 grade steel. Cuts through wood, metal, nails & screws



BES-BELL3824

Diameter 9.5mm x L610mm bell hanger bit made from premium M2 grade steel. Cuts through wood, metal, nails & screws



BES-BELL1224

Diameter 12.7mm x L610mm bell hanger bit made from premium M2 grade steel. Cuts through wood, metal, nails & screws



BES-BELL1436

Diameter 6.4mm x L915mm bell hanger bit made from premium M2 grade steel. Cuts through wood, metal, nails & screws



BES-BELL3836

Diameter 9.5mm x L915mm bell hanger bit made from premium M2 grade steel. Cuts through wood, metal, nails & screws



BES-FLX1424

Diameter 6.4mm x L610mm HSS flex bit made from premium M2 grade steel. Cuts through wood, metal, nails & screws



BES-FLX3824

Diameter 9.5mm x L610mm HSS flex bit made from premium M2 grade steel. Cuts through wood, metal, nails & screws



BES-FLX1224

Diameter 12.7mm x L610mm HSS flex bit made from premium M2 grade steel. Cuts through wood, metal, nails & screws



BES-FLX1436

Diameter 6.4mm x L915mm HSS flex bit made from premium M2 grade steel. Cuts through wood, metal, nails & screws



BES-FLX3836

Diameter 9.5mm x L915mm HSS flex bit made from premium M2 grade steel. Cuts through wood, metal, nails & screws



BES-FLX1236

Diameter 12.7mm x L915mm HSS flex bit made from premium M2 grade steel. Cuts through wood, metal, nails & screws



BES-FLX1454

Diameter 6.4mm x L1372mm HSS flex bit made from premium M2 grade steel. Cuts through wood, metal, nails & screws



BES-FLX3854

Diameter 9.5mm x L1372mm HSS flex bit made from premium M2 grade steel. Cuts through wood, metal, nails & screws



BES-FLX1254

Diameter 12.7mm x L1372mm HSS flex bit made from premium M2 grade steel. Cuts through wood, metal, nails & screws

Drill Bits

**BES-FLX3872**

Diameter 9.5mm x L1829mm HSS flex bit made from premium M2 grade steel. Cuts through wood, metal, nails & screws

**BES-FLX1272**

Diameter 12.7mm x L1829mm HSS flex bit made from premium M2 grade steel. Cuts through wood, metal, nails & screws

**BES-QTT91648**

Diameter 14.3mm x L1219mm auger flex bit, with four cutting edges allowing for rapid cutting. Crafted from high quality steel

**BES-GLF415**

Single 3 foot 4mm fibreglass glow rod, durable plastic coating super flexible design & perfect for a wide range of installations

**BES-GLF410**

Single 6 foot 4mm fibreglass glow rod, durable plastic coating super flexible design & perfect for a wide range of installations

CCTV Solutions

Protecting Your Future



Section Includes

IP Solutions

4 - 8MP Cameras

Dome & Bullet Cameras

Mounting Brackets



TMT®



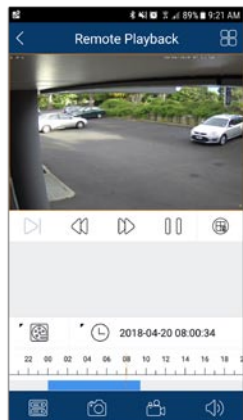
CCTV (IP & TVI)

Protect what matters most to you!

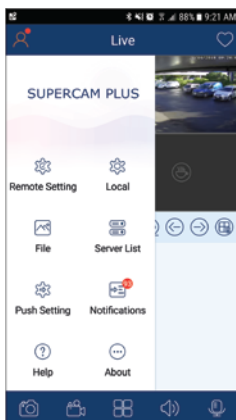
Consider adding a CCTV system to your home or business to protect your most valuable assets. TVT has a wide range of cameras and recorders to suit most applications and needs. Each TVT system comes with a free Apple or Android app so you can stay connected from anywhere, at any time

App Functions/Screenshots

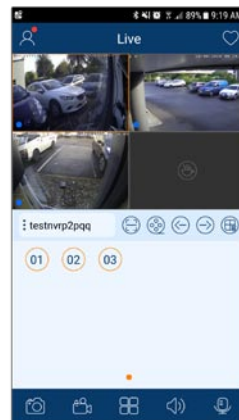
Search/Playback



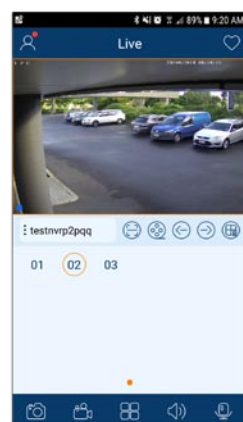
General Settings



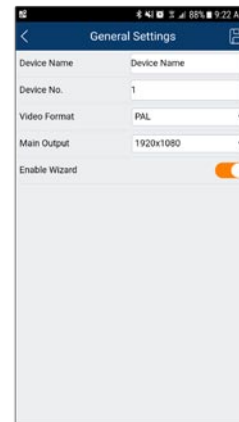
Select Camera



Single Camera View



Device Settings



SuperCam Plus



TVT-4CHNVR-2CAMKIT

4 Channel NVR kit includes: 1x TVT-4CHNVR-P, 2 x TVT-D2.8POE cameras, 2 x 20m CAT cables & 1TB HDD. **COMING SOON! First stock arriving end of August 2021**



TVT-4CHNVRKIT

4 Channel NVR kit includes: 1x TVT-4CHNVR-P, 4 x TVT-D2.8POE cameras, 4 x 20m CAT6 cables & 2TB HDD



TVT-8CHNVRKIT

8 Channel NVR kit includes: 1x TVT-8CHNVR-P, 4 x TVT-D2.8POE cameras, 4 x 20m CAT6 cables & 2TB HDD



TVT-4CHNVR-P

4 channel 1080P NVR 4 POE port with 1TB Hard Drive



TVT-8CHNVR-P

8 channel 1080P NVR 8 POE port with 2TB Hard Drive



TVT-16CHNVR-P

16 channel 1080P 4K NVR 16 POE port with 4TB Hard Drive



TVT-32CHNVR-P

32 channel 1080P 4K NVR 16 POE port with 6TB Hard Drive



TVT-64CHNVR

64 channel 1080P NVR with 2x 6TB Hard Drives, 16x HDD Slots, 1080P Output, No POE



TVT-D2812POE

5MP 2.8-12mm motorised varifocal lens POE waterproof dome camera. Compatible with TVT-NVR's



TVT-D2.8POE

5MP 2.8mm fixed lens POE dome waterproof IP camera. Compatible with TVT-NVR's

**TVT-B2812POE**

4MP 2.8-12mm motorised varifocal lens POE waterproof bullet camera. Compatible with TVT-NVR's

**TVT-P180-8POE**

8MP starlight 180° panoramic waterproof bullet network camera. Compatible with TVT-NVR's

**TVT-360POE**

6MP 1.07mm POE 360 degree fisheye camera with microphone. Outdoor ready. Compatible with TVT-NVR's

**TVT-B3610SPOE**

5MP 3.6-10mm lens, IP starlight waterproof bullet POE camera. Compatible with TVT-NVR's

**TVT-D28SPOE**

2MP 2.8mm fixed lens, IP starlight waterproof dome POE camera. Compatible with TVT-NVR's

**TVT-B2812-8POE**

8MP 2.8-12mm motorised lens, waterproof bullet POE camera. Compatible with TVT-NVR's

**TVT-D2812-8MP**

8MP 2.8-12mm motorised lens, waterproof dome POE camera. Compatible with TVT-NVR's

**TVT-PTZ-TD84413S**

4MP 4.8-120mm 25x optical zoom, PTZ camera with auto tracking (outdoor ready). Compatible with TVT-NVR's

**TVT-B922POE**

5MP 9-22mm motorised varifocal lens, POE waterproof IP camera. Compatible with TVT-NVR's

**TVT-D722AI**

2MP 7-22mm lens, waterproof Ai face recognition camera. Compatible with TVT-4CHNVR-P & 8, 16 & 32 channel models

**TVT-P4.3**

2MP discrete pinhole network camera (note - not POE)



Simple & Cost Effective TVI CCTV

**TVT-4CHDVRKIT**

4 channel DVR, 4x 3.6mm 1080P dome cameras, 4x 20m coax cables, 1TB HDD & 1x DC splitter

**TVT-4CHTVR**

4 channel 1080P output. TVI/AHD & CVI recorder with 1TB hard drive. Includes 4 external alarm inputs & 1 alarm output

**TVT-8CHTVR**

8 channel 1080P output. TVI/AHD & CVI recorder with 2TB hard drive. Includes 4 external alarm inputs & 1 alarm output

**TVT-16CHTVR**

16 channel 1080P output. TVI/AHD & CVI recorder with 4TB hard drive. Includes 4 external alarm inputs & 1 alarm output

**TVT-16CHTVR-4K**

16 Channel 4K TVR with 4TB Hard Drive

**TVT-D2812-5MP**

5MP 2.8-12mm vari-focal lens. HD Analogue IR Dome Camera. Compatible with TVT-16CHTVR-4K

**TVT-D3.6-5MPTVI**

5MP 3.6mm HD Analogue IR Dome Camera. Compatible with TVT-16CHTVR-4K

**TVT-B2812TVI**

2.8-12mm 1080P waterproof bullet TVI camera. Compatible with TVT-TVR's

**TVT-D2812TVI**

2.8-12mm 1080P waterproof dome TVI camera. Compatible with TVT-TVR's

**TVT-D2.8TVI**

2.8mm fixed lens 1080P waterproof dome TVI camera. Compatible with TVT-TVR's

**POE-4**

4 PoE Power Port Gigabit 30W per port (10/100/1000Mbps)

**POE-8**

8 PoE Power Port Gigabit 30W per port (10/100/1000Mbps)

**POE-16**

16 PoE Power Port Gigabit 30W per port (10/100Mbps)

**POE-24**

24 PoE Power Port Gigabit 30W per port (10/100Mbps)

Additional CCTV Products & Accessories

**TVT-YXH0103**

Camera bracket junction box, perfect for hiding excess cables. Compatible with TVT-D2.8POE, TVT-D2.8TVI

**TVT-YZJ0203**

Wall mount camera bracket, compatible with TVT-D2.8TVI, TVT-D2.8POE & TVT-D2812POE

**TVT-YZJ0807**

Ceiling mount bracket compatible with TVT-PTZ-TD84413S

**TVT-YZJ0701E**

Mounting bracket compatible with TVT-PTZ-TD84413S

**TVT-YZJ0204**

Wall mount camera bracket, compatible with TVT-D2812TVI

**TVT-YZJ0813**

Ceiling mount camera bracket, compatible with TVT-360POE

**TVT-YXH0205**

Camera bracket junction box, compatible with TVT-D2812TVI, TVT-D2.8TVI & TVT-D2.8POE

**TVT-YXH0303**

Camera bracket junction box, compatible with TVT-D2812TVI & TVT-D3312-8POE

**TVT-ZG0202**

Extendable pole bracket 20cm length, may require additional mounting brackets based on your camera selection

**TVT-YZJ0408**

Wall mount camera bracket, compatible with TVT-D2812TVI & TVT-D3312-8POE. Note - may require additional accessories

**TVT-YZJ0501**

Pole mount camera bracket, compatible with dome & bullet cameras. Note - may require additional accessories depending on camera model



POE INJECTOR

Single Port Gigabit POE Injector, input voltage 100-240VAC, output voltage 48VDC, data range 10/100/1000Mbps



SWITCH-8

8 Port Gigabit Non POE Switch 12V/DC



WIFI LR-CPE300P-KIT

Long range outdoor wireless bridge with maximum transmission range of 1km. Supports POE solutions and plugpack included



IP EXTENDER

Transmit IP camera signal over existing coaxial cables. Transmission distance of up to 220m & includes built-in surge protection



CAV-DUMMY

Weatherproof dummy CCTV camera with blinking LED



MONITOR-21.5

21.5" LED monitor, includes BNC in, BNC out, HDMI, VGA, audio in & audio out



BALUN

CVI/TVIAHD over CAT6 Balun Pair up to 300m. Compact size and easy installation



CCTV SIGN-S

Small CCTV warning sign, PVC outdoor rated. Dimensions L240mm x W150mm



CCTV SIGN-L

Large CCTV warning sign, PVC outdoor rated. Dimensions L300mm x W240mm



CCTV STICKER

Warning surveillance cameras sticker. Dimensions L160mm x W80mm

AAP Contact Details

Arrowhead Alarm Products Ltd

Phone: (09) 414 0085

Website: www.aap.co.nz

For all Tech Sales Enquires

Mario Cannon: mario@aap.co.nz

Andre Fatu: andre@aap.co.nz

For all orders

orders@aap.co.nz

For all Tech Support Enquires

Email: tech@aap.co.nz

Phone: (09) 414 0085

Matt Hobson

Sales Manager & Upper

North Island Rep

Sales Rep & Technical Sales

✉ matt@aap.co.nz

☎ 027 588 9844

Andre Fatu

Lower North Island

Sales Rep & Technical Sales

✉ andre@aap.co.nz

☎ 021 0830 1294

Nicky Foden

South Island BDM

✉ nicky@aap.co.nz

☎ 022 105 3589

Roman Jacobs

BOP & Waikato Sales Rep &

Technical Support Team Leader

✉ roman@aap.co.nz

☎ 021 117 3428



Innovative Security



www.aap.co.nz

Arrowhead Alarm Products Ltd.



www.aap.co.nz



100% New Zealand Owned & Operated

| Innovative Security