



Secure the world with you

User Manual

Notice: This manual takes 8-port switch as an example



TVT is the trademark of Shenzhen TVT Digital Technology Co., Ltd. In this Manual, the trademarks, product names, service names, company names, products that are not owned by our company are the properties of their respective owners. Without the written consent of Shenzhen TVT Digital Technology Co., Ltd. (the “Company”), no entity or individual may extract, copy, translate, revise, or distribute the content of this Manual (the “Manual”) in part or all, or transmit in any form.

Use of the Product

- This product should not be used for illegal purposes.
- The company does not allow anyone to use the Company's products to infringe the privacy, personal information, and portrait rights of others. The user shall not use this product for any illegal use or any prohibited use under these terms, conditions, and declarations. When using this product, the user shall not damage, disable, overload or obstruct any of the hardware of this product in any way, or interfere with the use of this product by any other users. Also, the user should not attempt to use the product or the software, by hacking, stealing the password, or any other means.

About the Manual

The manual is for reference only. If there is inconsistency between the manual and the actual device, the actual device shall prevail.

1. We are not liable for any loss caused by the operations that do not comply with the manual.
2. If there is inconsistency between paper manual and the electronic version, the electronic version shall prevail.
3. All the designs and software are subject to change without prior written notice. The device updates might cause some differences between the actual device and the manual. Please contact the customer service for the latest program and supplementary documentation.
4. There still might be deviation in technical data, functions and operations description, or errors in print. If there is any doubt or dispute, we reserve the right of final explanation.
5. Upgrade the reader software or try other mainstream reader software if the manual (in PDF format) cannot be opened.
6. All trademarks, registered trademarks and the company names in the manual are the properties of their respective owners.
7. Please visit our website, contact the supplier or customer service if there is any problem occurring when using the device.
8. If there is any uncertainty or controversy, we reserve the right of final explanation.

Table of Contents

Important Safeguards and Warnings.....	1
Main Features.....	2
Installation guidelines.....	3
Indicator and Button Function Table.....	4
Indoor PoE+ Switch Items.....	4
Ports Description.....	5
Trouble Shooting.....	6
RJ 45 Making Method.....	6

Important Safeguards and Warnings

The manual helps you to use our devices properly. To avoid danger and property damage, read the manual carefully before using the device, and we highly recommend you to keep it well for future reference.

Operating Requirements

1. Do not expose the device directly to the sunlight, and keep it away from heat.
2. Do not install the device in the damp environment, and avoid dust and soot.
3. Make sure the device is in horizontal installation, and install the device on solid and flat surface to avoid falling down.
4. Avoid liquid spattering on the device. Do not place object full of liquid on the device to avoid liquid flowing into the device.
5. Install the device in the well-ventilated environment. Do not block the air vent of the device.
6. Use the device at rated input and output voltage.
7. Do not disassemble the device without professional instruction.
8. Transport, use, and store the device in allowed ranges of humidity and temperature.

Power Supply Requirements

1. Use locally recommended power cord in the limit of rated specifications.
2. Use the standard power adapter. We will assume no responsibility for any problems caused by nonstandard power adapter.
3. The power supply shall meet the SELV requirement. Use the power supply that conforms to Limited Power Source, according to IEC60950-1. Refer to the device label.
4. The coupler is the disconnecting apparatus. Keep it at the angle for easy to operate.

Main Features

1. Using network patch cords support power for the wireless AP/CPE and IP camera/PTZ
2. Networking standard: IEEE802.3af/at.
3. E file (on): Transmission of 250m
4. D file (on): PoE Watchdog AI Function; Detection front-end PoE cameras and PD, Automatic detection, Automatic restart.
5. 4KV lightning protection, 8KV surge protection, anti-reverse connection, over-current protection, over-voltage protection, over-temperature protection, Short circuit protection.
6. The Max output power of the port is 30W, which is convenient for hi-power equipment.
7. Zero configuration feature power supply is automatically supplied to the adaptive equipment.

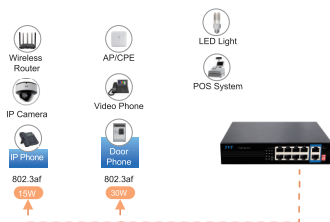
AI Watchdog Function

D file (on): Auto-detect and restart IP camera timely if the camera is halted.



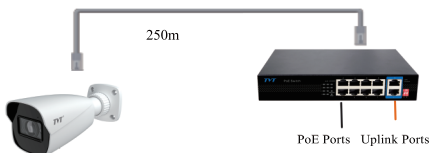
4KV Lightning & 8KV ESD Protection

Reaching 4KV lightning and 8KV Static electricity protection, the PoE ports own the capacity to keep the PoE Switch from lightning strikes and other electrical surges, offering reliable performance even in some harsh environments.



E file (on): 250m Transmission

All ports will reduce from 100Mbps to 10Mbps. At this time, the farthest transmission distance of all ports will reach 250m.



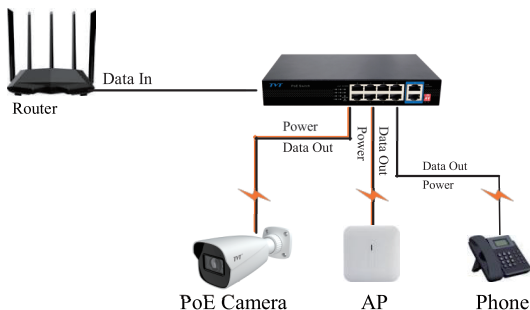
Installation Guidelines

Installation Steps:

Please follow installation steps as below:

1. Please turn off the signal source and the device's power, installation with power on may damage the device.
2. Use 8pcs network cables to connect 8pcs IP cameras with the product's 1~8 RJ45 Ethernet ports;
3. Use another network cable to connect switch's UPLINK port with NVR or computer.
4. Connect switch with power adaptor.
5. Check if the installation is correct and device is good, make sure all the connection is reliable and power up the system.
6. Make sure the power supply of each network device works properly.

Installation Diagram:



⚠ Caution:

1. To protect safety non-professionals are not allowed to open the casing of product;
2. Please be careful of the risk of strong current and security protection when products carry power;
3. Please select the right power adaptor for PoE switch, before using please confirm if it is accord with the requirements of PoE switch;
4. Please don't use PoE switch in humid environment, avoiding breakdowns caused by water entering the device;
5. Please turn on the device after the circuit connected;
6. Please don't plug-in and plug-out the connection cable when product is carrying on power;
7. Please don't use PoE switch in dusty and EME place;
8. Please don't put heavy things on PoE switch, to prevent accident;
9. According to the IEEE802.3af/at standard, if the device need reach 250m please use Cat.5 or above level network cable;
10. Please don't exceed the maximum output power of PoE switch when connecting multiple PD device;
11. Suggested for indoor use for outdoor please refer waterproof model, if you want to use for outdoor, Please use waterproof model No.

Indicator and Button Function Table

Symbol	Indicator Function	State	Description	Colour
PWR	Work indicator	On	Normal	Green
		Off	Switch no power supply or failure	
		Blink	System abnormality or failure	
Link	Network	On	Link is ok	Green
		Blink	The link port is receiving/sending data	
		Off	Link failure or port failure	
Function Switch				
E	250m transmission	Turn the switch to the symbol, then	Enable the PoE port 10M/250m long-distance transmission function	Green
	VLAN		Enable PoE port VLAN isolation function	
D	Watchdog	the function is turned on	Enable the PoE port self-healing network restart (watchdog) function	—

Indoor PoE+ Switch Items

AI PoE+ Switch



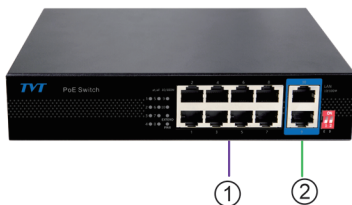
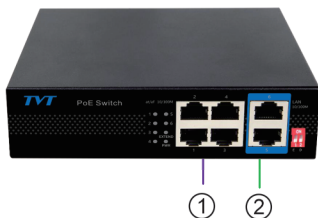
Power Cable



User Manual



Ports Description



① – 10/100Mbps PoE Ports

② – 10/100Mbps Uplink Ports

Note: 8 PoE switch (TD-B2208S1-PEU) supports 100Mbps uplink ports; 8 PoE switch (TD-B2208S1-PGU) supports 1000Mbps uplink ports.

Trouble Shooting

Please find the following solutions when the device doesn't work.

1. Please confirm if the installation is correct;
2. Please confirm if the RJ45 cable order is in accordance with the EIA/TIA568A or 568B industry standards;
3. The power supply of a / at PoE port can't exceed 30W; please do not connect the PoE device which exceeds the maximum PoE power supply;
4. Please replace a failure device with a properly functioning one to check if the device is broken;
5. If the problem still exists, please contact the factory.

RJ 45 Making Method

Tools to make RJ45: wire crimper, network tester;

Wire sequence of RJ45 plug should conform with EIA/TIA568A or EIA/TIA568B standard;

1. Strip off the 2cm insulating layer to expose the 4 pairs UTP cable;
2. Separate the 4 pairs of UTP cable and straighten them;
3. Line up the 8 separated pieces of cables per EIA/TIA 568A or 568B;
4. Cut the cables to leave 1.5cm bare wire and make sure 8 thread ends are flat and neat;
5. Plug 8 cables into RJ45 plug, make sure each cable is in each pin;
6. Then use wire crimper to crimp the RJ45;
7. Do the above 5 steps again to make the another end of the twisted pair and make sure consistent cable order between two ends;
8. Using network tester to test the cable.

Pin color
1 white/green
2 green
3 blue
4 white/orange
5 white/blue
6 white/brown
7 orange
8 brown



EIA/TIA 568A

Pin color
1 white/orange
2 orange
3 white/green
4 blue
5 white/blue
6 green
7 white/brown
8 brown



EIA/TIA 568B

Notice

Make sure both ends use EIA/TIA568A connection method when using RJ45 port.

Make sure both ends use EIA/TIA568B connection method when using RJ45 port.

Secure the world with you

Shenzhen TVT Digital Technology Co., Ltd
Address: 23th Floor, Block B4, Building No.9, Shenzhen Bay
Eco-Technology Park, Nanshan District, Shenzhen, Guangdong
Province, PR China
Email: overseas@tvt.net.cn
Website: <http://en.tvt.net.cn>