



HM-SMOKE230

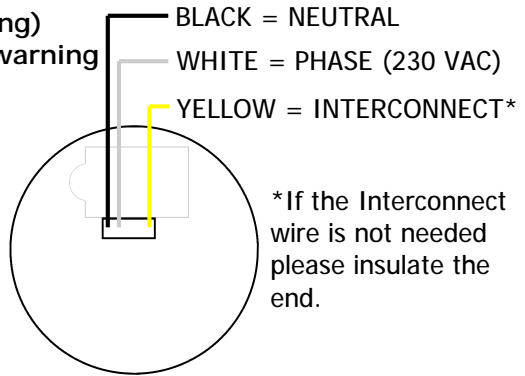
230v AC inter connectable smoke detector with battery backup and hush & test button.

FEATURES:

- Auto-reset when smoke clears
- Self test/hush button
- 9 Volt battery backup (non charging)
- Low battery and missing battery warning
- 85 db internal warning sounder
- Inter connectable
- CE approved
- Photo Electric

SPECIFICATION:

Operating Voltage. 230VAC 50Hz
Current Standby 10uA
Current Alarm 35uA
Operating Temp. -10°C ~ +50°C
Dimensions. Dia.128mm x 38mm



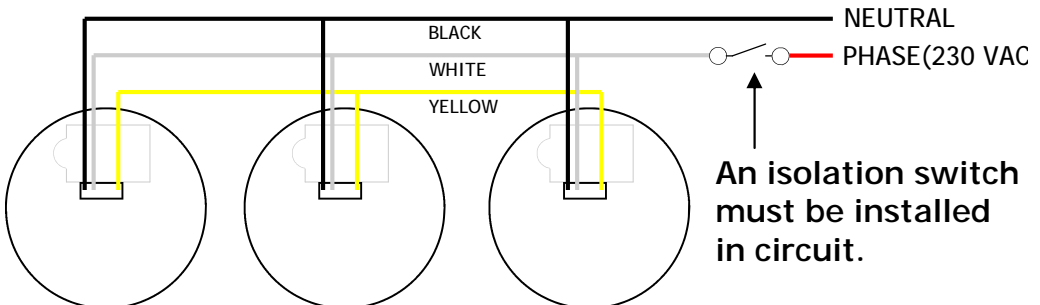
INTER CONNECTING SMOKES

When the HM-SMOKE230's are wired in inter connectable mode, if one of the smoke detectors is triggered, all smokes in the circuit with go into alarm and activate there sounders.



Danger
High voltage

Do not unplug cable until power is isolated.

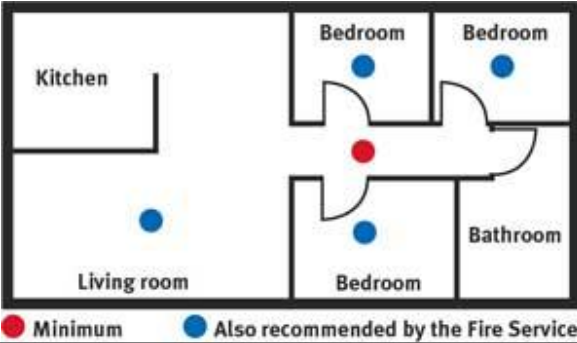


Suggested Mounting Locations

Smoke alarms must be located in escape routes on all levels within the household unit.

On levels containing sleeping spaces, they must be installed within the sleeping space, or within 3 metres of every sleeping space door. And they must be audible through closed doors.

Always Refer to NZS 4514:2009 or the latest standard for full installation recommendations.



ARROWHEAD ALARM

PRODUCTS Ltd.

344b Rosedale Rd,

Albany,

Auckland.

Ph. 09 414 0085

Fax. 09 414 0088

www.aap.co.nz

v1.03



Arrowhead Alarm Products Ltd

